



HALLEY HOUSE, WESTMORELAND ROAD, QUEENSBURY NW9  
**£360,000 LEASEHOLD**

## STUNNING ONE BEDROOM SPACIOUS FLAT WITH BALCONY

Kingsbury | 020 8204 0000 | [kingsbury@winkworth.co.uk](mailto:kingsbury@winkworth.co.uk)

**Winkworth**

for every step...

[winkworth.co.uk](http://winkworth.co.uk)





Winkworth  
for every step...

**DESCRIPTION:** LOCATION, LOCATION, LOCATION! Nestled in the heart of Queensbury, this TURNKEY BEAUTIFUL flat is situated on the 5th floor and offers approximately 535 sq. ft of luxurious living space with STUNNING VIEWS that will take your breath away. RECENTLY CONSTRUCTED, boasting CONTEMPORARY LIVING SPACE this exquisite property epitomizes MODERN COMFORT AND ELEGANCE. The highlight is the OPEN PLAN KITCHEN that seamlessly flows into a SPACIOUS and inviting living SPACE boasting both SOPHISTICATION and VERSATILITY. This well-designed layout allows for easy entertaining and relaxation. You'll be captivated by the generously sized BALCONY that extends from the living space, providing the perfect spot to unwind on a sunny, bright day, this outdoor space is a sanctuary of tranquillity. The bedroom is not only a haven of rest but also a masterclass in efficient use of space. Great storage space via wardrobes ensuring that your belongings are neatly organized and out of sight, allowing you to maintain a clutter-free living environment. The Neutral BATHROOM benefits from a three-piece suite. Added benefits are a LONG LEASE of 996 years remaining and well-planned COMMUNAL GARDENS. From your Doorstep you will access Queensbury Station on the JUBILEE LINE, which will take you 30 minutes into CANARY WHARF and CENTRAL LONDON. Morrisons, B&Q and several other amenities are a stone's throw away, allowing you to benefit from a truly urban living concept coupled with community spirit. This development is a testament to modern living at its finest.



Winkworth  
for every step...



Winkworth  
for every step...

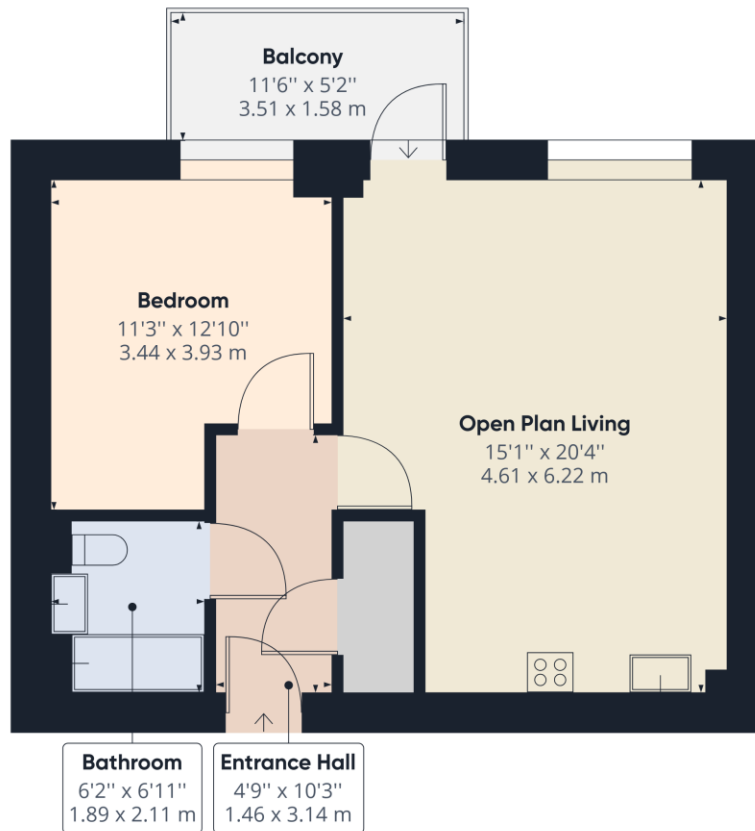
Winkworth

for every step...



**Winkworth**  
for every step...





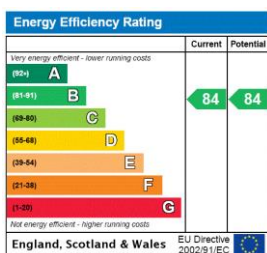
**Approximate total area<sup>(1)</sup>**  
535.23 ft<sup>2</sup>  
49.72 m<sup>2</sup>

(1) Excluding balconies and terraces

While every attempt has been made to ensure accuracy, all measurements are approximate, not to scale. This floor plan is for illustrative purposes only.

GIRAFFE 360

This floorplan is for illustration purposes only and is not to scale. The position and size of doors, windows, appliances and other features are approximate.



Winkworth

Kingsbury | 020 8204 0000 | kingsbury@winkworth.co.uk

for every step...

winkworth.co.uk

Winkworth wishes to inform prospective buyers and tenants that these particulars are a guide and act as information only. All our details are given in good faith and believed to be correct at the time of printing but they don't form part of an offer or contract. No Winkworth employee has authority to make or give any representation or warranty in relation to this property. All fixtures and fittings, whether fitted or not are deemed removable by the vendor unless stated otherwise and room sizes are measured between internal wall surfaces, including furnishings.