



Clive Court, London, W9

£549,950 *Share of Freehold*



An opportunity to purchase a well-proportioned two-bedroom fourth floor apartment fully refurbished, forming part of this well-known purpose-built block with added advantage of a lift, porterage and a westerly facing balcony of the reception room. The apartment is ready for immediate occupation, located to the rear of the building with a peaceful quiet aspect overlooking Little Venice. The apartment offers a wealth of natural light with a spacious open plan reception room / kitchen, a principle bedroom suite, a second bedroom and a shower room. Clive Court is situated close (Approx. 0.2 Miles) to the boutique shops, cafes on Clifton Road, the famous Regents Canal and the Underground at Warwick Avenue (Approx. 0.5 Miles).



Winkworth Maida Vale

020 7289 1692 | maidavale@winkworth.co.uk

Winkworth

for every step...



KEY FEATURES

- Two Bedrooms
- Two Shower Rooms
- Kitchen/Reception Room
- Balcony
- Advantage of a lift
- Porterage
- Share of Freehold



MATERIAL INFO

Tenure: Share of Freehold

Lease Expiry Date: 01/01/3017

Service Charge: £5,776.40 per annum

Service Charge Note: Including £1,229.92 Sinking Fund

Ground Rent: £0 Annually (subject to increase)

Council Tax Band: D

EPC rating: D





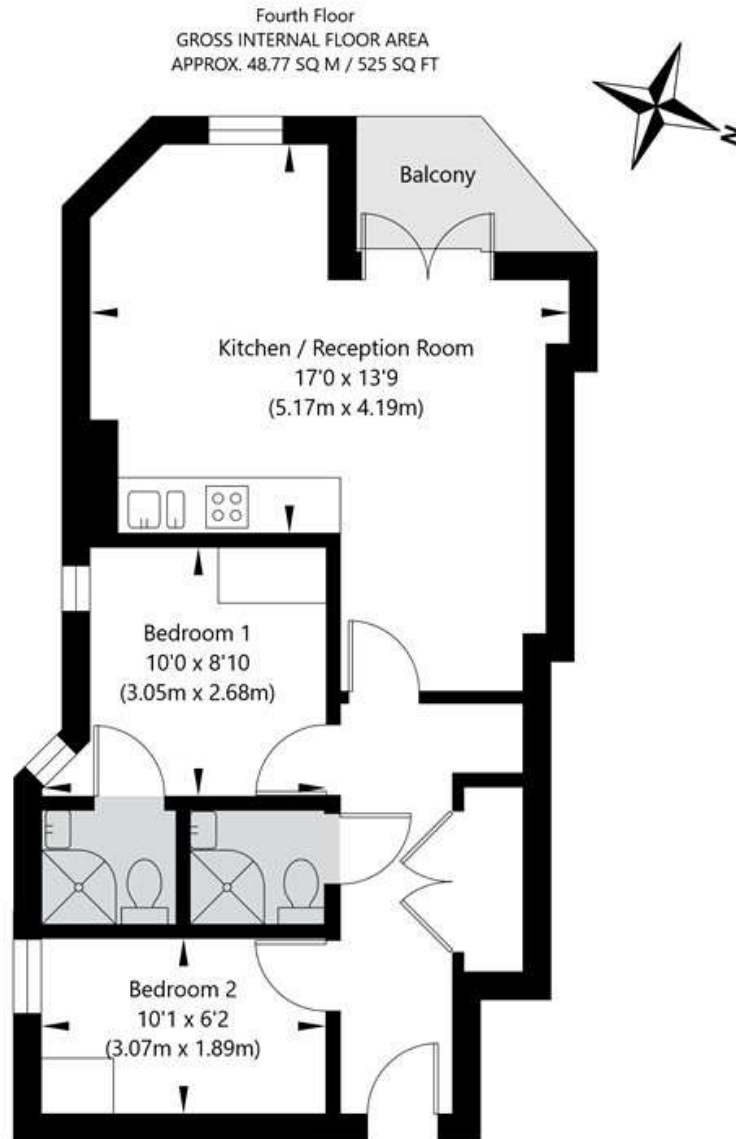
Score	Energy rating	Current	Potential
92+	A		
81-91	B		
69-80	C		78 C
55-68	D	61 D	
39-54	E		
21-38	F		
1-20	G		

For more information, scan the QR code or visit the link below



<https://www.winkworth.co.uk/sale/property/MDV250103>

Clive Court, Maida Vale, London W9 1SF



APPROXIMATE GROSS INTERNAL FLOOR AREA 48.77 SQ M / 525 SQ FT
THIS FLOOR PLAN IS FOR ILLUSTRATIVE PURPOSES ONLY AND
SHOULD BE USED FOR THIS PURPOSE BY PROSPECTIVE APPLICANTS AS ITS NOT TO SCALE.

(c) AMBERSHORE PIX LIMITED / PHOTO - VIDEO - FLOOR PLANS / 0800 999 1577 / WWW.AMBERSHOREPIX.CO.UK

Where no figures are shown, we have been unable to ascertain the information. All figures that are shown were correct at the time of printing.

Winkworth Maida Vale

020 7289 1692 | maidavale@winkworth.co.uk

Winkworth

for every step...

Winkworth wishes to inform prospective buyers and tenants that these particulars are a guide and act as information only. All our details are given in good faith and believed to be correct at the time of printing but they don't form part of an offer or contract. No Winkworth employee has authority to make or give any representation or warranty in relation to this property. All fixtures and fittings, whether fitted or not are deemed removable by the vendor unless stated otherwise and room sizes are measured between internal wall surfaces, including furnishings.