

ALTITUDE POINT, 71 ALIE STREET, LONDON, E1
OIEO: £760,000

INCREDIBLE TWENTIETH FLOOR APARTMENT WITH VIEWS ACROSS THE CITY AND PRIVATE UNDERGROUND PARKING

Shoreditch | 020 7749 7650 | shoreditch@winkworth.co.uk

Winkworth



DESCRIPTION:

A stylish and modern two double bedroom, two-bathroom apartment located on the 20th floor of the Altitude Tower with private underground parking and spectacular views across London. The apartment has been finished to a high specification throughout and boasts a comfort cooling system, video entry system, under floor heating, integrated AV system using Control4, ceiling to floor windows, granite work tops and 24-hour concierge.

The property comprises entrance hall with storage space, master bedroom with en-suite bathroom, further second double bedroom, family bathroom with bath and separate shower and a vast open plan fully fitted kitchen/living room with a range of built in appliances including; fridge/freezer, wine cooler, double oven, electric hob and extractor fan.

Altitude Point is enviably located moments from Aldgate East and Aldgate underground stations, you are within walking distance of Whitechapel (Crossrail) and Liverpool Street Station offering excellent access across the City. There is an array of local amenities as well as Brick Lane and Spitalfields market close by with a range of boutique shops, art galleries, cafes, bars and restaurants.

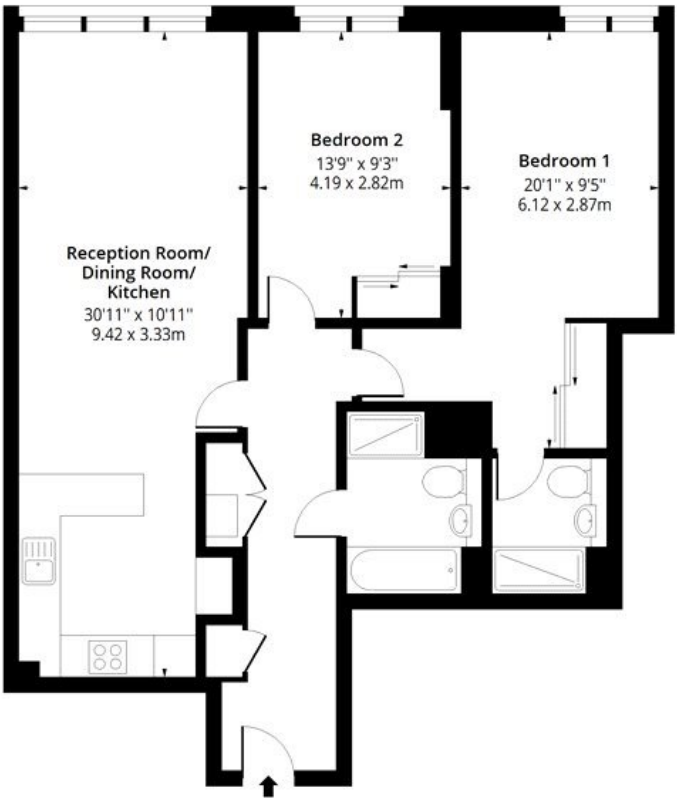
Winkworth



Winkworth

Altitude Point, E1

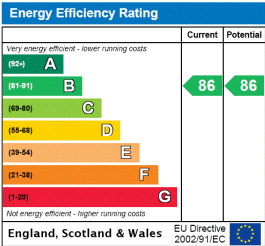
Approx. Gross Internal Area 883 Sq Ft - 82.03 Sq M



Twentieth Floor
Floor Area 883 Sq Ft - 82.03 Sq M

Floor plan is for illustrative purposes only and is not to scale. Every attempt has been made to ensure the accuracy of the floor plan shown, however all measurements, fixtures, fittings and data shown are an approximate interpretation for illustrative purposes only.
lpaplus.com

This floorplan is for illustration purposes only and is not to scale. The position and size of doors, windows, appliances and other features are approximate.



Shoreditch | 020 7749 7650 | shoreditch@winkworth.co.uk



winkworth.co.uk

See things differently

Winkworth wishes to inform prospective buyers and tenants that these particulars are a guide and act as information only. All our details are given in good faith and believed to be correct at the time of printing but they don't form part of an offer or contract. No Winkworth employee has authority to make or give any representation or warranty in relation to this property. All fixtures and fittings, whether fitted or not are deemed removable by the vendor unless stated otherwise and room sizes are measured between internal wall surfaces, including furnishings.