



Lakeside Road, Brook Green, W14

£550,000 Leasehold

A stylish two bedroom flat on the raised ground floor of a mid-terrace Victorian house.

A video viewing of this property is available. Please enquire for further details.

Reception Room | Open Plan Kitchen | 2 Bedrooms | Shower Room | 568 Sq Ft / 52.8 Sq M | Council Tax Band C | EPC Rating Band D

Winkworth



LOCATION

Lakeside Road is ideally located for the numerous amenities of both Brook Green and Shepherds Bush, including Westfield London. The closest stations are Shepherds Bush (Central Line and Overground) and Hammersmith (Piccadilly, District, Circle and Hammersmith & City Lines).

DESCRIPTION

Offered in extremely good order throughout, the property benefits from accommodation comprising reception room with open plan kitchen, two bedrooms and shower room. The property is has exceptionally high ceilings throughout and also boasts a wide range of fitted storage.





LOCAL AUTHORITY
Hammersmith and Fulham

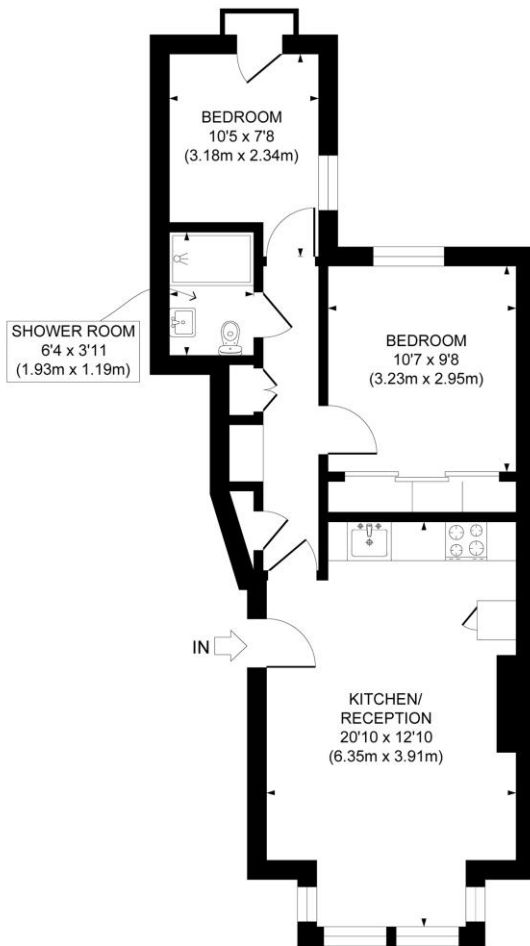
TENURE
Leasehold.

PRICE: £550,000 Leasehold



Energy Efficiency Rating

	Current	Potential
Very energy efficient - lower running costs		
(92+) A		
(81-91) B		
(69-80) C		74
(55-68) D	55	
(39-54) E		
(21-38) F		
(1-20) G		
Not energy efficient - higher running costs		
England, Scotland & Wales	EU Directive 2002/91/EC	



RAISED GROUND FLOOR
GROSS INTERNAL
FLOOR AREA 568 SQ FT

APPROX. GROSS INTERNAL FLOOR AREA: 568 SQ FT / 52.8 SQM

PROPERTY PHOTO PLANS.co.uk
ONE STOP SHOP FOR PROPERTY MARKETING

Whilst every attempt has been made to ensure the accuracy of the floor plan contained here, measurements of the doors, windows, rooms and any other items are approximate and no responsibility is taken for any errors, omissions, or miss-statement. This plan is for illustrative purposes only and should be used as such by any prospective client. The services, systems and appliances shown have not been tested and no guarantee as to the operability or efficiency can be given.

The displayed square footage is taken from the floor plans with measurements created using the Royal Institute of Chartered Surveyors' Code of Practice for Measuring. These measurements are approximate and included for illustrative purposes only. Winkworth does not make any representation as to the accuracy of these measurements and you should seek to verify them for yourself. Winkworth accept no liability for any loss you may suffer if you rely on these measurements.

Hammersmith | 0207 371 4466 | hammersmith@winkworth.co.uk

Winkworth

for every step...

Under the Property Misdescriptions Act 1991, these Particulars are a guide and act as information only. All details are given in good faith and are believed to be correct at time of printing. Winkworth give no representation as to their accuracy and potential purchasers or tenants must satisfy themselves by inspection or otherwise as to their correctness. No employee of Winkworth has authority to make or give any representation or warranty in relation to this property.