



ABERDEEN PARK, LONDON, N5
£550,000 LEASEHOLD

A STUNNING, ONE DOUBLE BEDROOM, FIRST FLOOR APARTMENT SITUATED ON A PRIVATE ROAD IN HIGHBURY.

Highbury | 0207 989 7000 | highbury@winkworth.co.uk

Winkworth

winkworth.co.uk

See things differently



DESCRIPTION:

A sensational, one double bedroom, first floor apartment situated on one of Highbury's most exclusive addresses. Standing in excess of 600 sqft, the property has a wonderful charm throughout with tremendous high ceilings and original sash windows. The incredibly bright, west facing, 302 sqft open plan living room/kitchen creates the perfect entertaining space and has views of uninterrupted greenery positioned along Aberdeen Park. The good-sized double bedroom features built in storage, while a cleverly designed study area creates an ideal work from home space or extra storage. The property is completed with a family sized bathroom and private outside space section leading out from the window in the bedroom.

Aberdeen Park is a private cul-de-sac street, the charm of which is the unusually wide street and the abundance of mature trees.

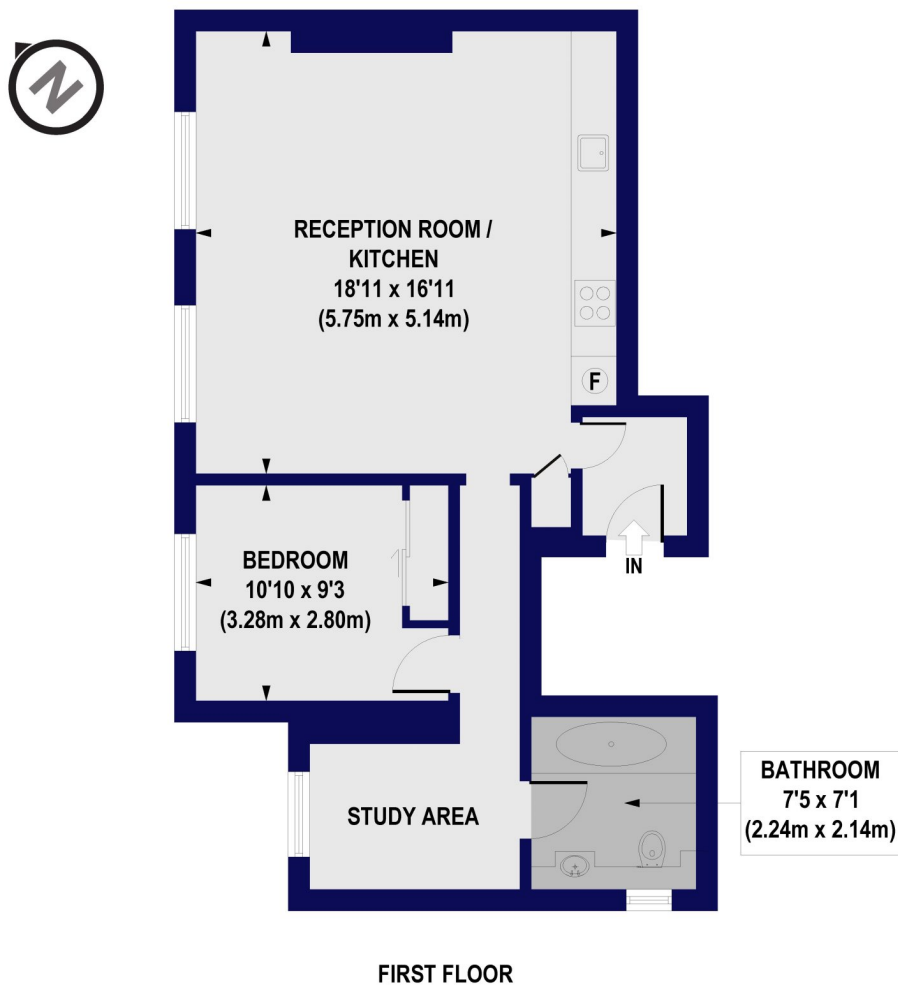
The property is located close to the entrance of the green spaces of Highbury Fields. The prestigious Highbury Barn is also close by and offers highly renowned local amenities, including Godfreys butchers, La Fromagerie, Da Mario's Deli, Bourne's Fishmongers and Wine Rack Vintners, all of which are hugely popular with locals as well as drawing those from further afield.

Winkworth



Winkworth

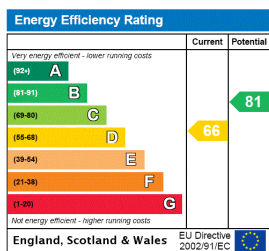
Aberdeen Park, N5
Approx. Gross Internal Floor Area 602 sq. ft / 55.90 sq. m



All measurements of walls, doors, windows, fittings and appliances, including their size and location, are shown as standard sizes and do not constitute any warranty or representation by the seller, their agent or CP Creative. Any intending purchaser must satisfy himself by inspection or otherwise as to the correctness of the information contained in these plans. This plan is for illustrative purposes only and should be used as such by any prospective purchasers.

Winkworth

This floorplan is for illustration purposes only and is not to scale. The position and size of doors, windows, appliances and other features are approximate.



Highbury | 0207 989 7000 | highbury@winkworth.co.uk

Winkworth

winkworth.co.uk

See things differently

Winkworth wishes to inform prospective buyers and tenants that these particulars are a guide and act as information only. All our details are given in good faith and believed to be correct at the time of printing but they don't form part of an offer or contract. No Winkworth employee has authority to make or give any representation or warranty in relation to this property. All fixtures and fittings, whether fitted or not are deemed removable by the vendor unless stated otherwise and room sizes are measured between internal wall surfaces, including furnishings.