



## Emperors Gate, South Kensington, London, SW7

£738.46 per week\* / £3,200 per month – Furnished

A two bedroom flat located on the second floor (with lift) of this period building on this quiet garden square.

2 Bedrooms | 1 Reception Room | 2 Bathrooms | First Floor Flat | Balcony | Lift | 588 Approx sq ft | EPC: C

APPLICANT FEES MAY BE APPLICABLE  
HOLDING DEPOSIT OF 1 WEEK'S RENT  
DEPOSIT OF 5 WEEKS' RENT

**Winkworth**

[winkworth.co.uk](http://winkworth.co.uk)

for every step...

## DESCRIPTION:

The property benefits from an open-plan kitchen/reception room, one double bedroom with en-suite bathroom, one smaller bedroom and a separate shower room. The property is available immediately on a furnished basis.

## ACCOMMODATION

2 Bedrooms, 1 Reception Room,  
2 Bathrooms, First Floor, Balcony,  
Lift, Furnished, 588 Approx sq ft

## LOCAL AUTHORITY

The Royal Borough of Kensington & Chelsea

## NEAREST TRANSPORT

Gloucester Road Tube Station  
South Kensington Tub Station

## COUNCIL TAX BAND

Band F

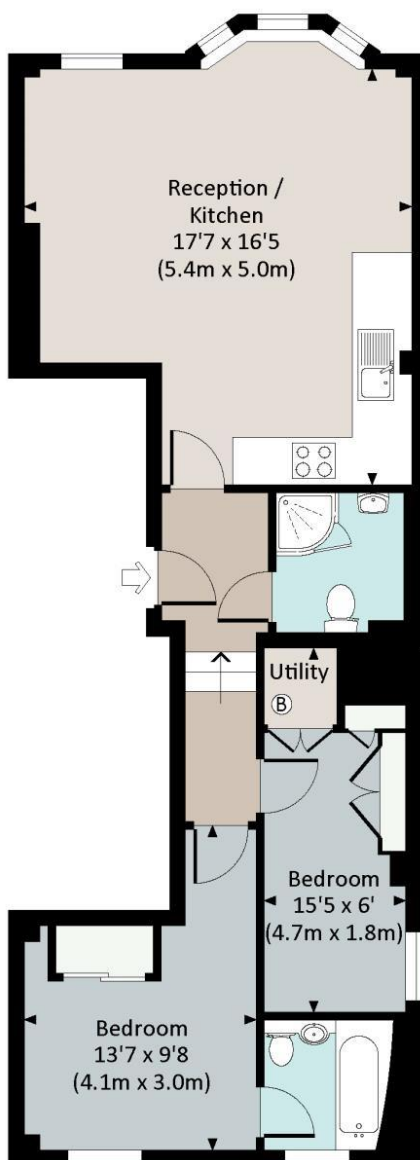


Energy Efficiency Rating		
	Current	Potential
Very energy efficient - lower running costs		
(92+) <b>A</b>		
(81-91) <b>B</b>		
(69-80) <b>C</b>	77	78
(55-68) <b>D</b>		
(39-54) <b>E</b>		
(21-38) <b>F</b>		
(1-20) <b>G</b>		
Not energy efficient - higher running costs		
England, Scotland & Wales	EU Directive 2002/91/EC	



## EMPERORS GATE, SW7

Approx. gross internal area  
588 Sq Ft. / 54.6 Sq M.



### SECOND FLOOR



All measurements are approximate and for illustration purposes only as defined by the RICS Code of Measuring Practice © 2014  
Dowling Jones Design www.dowlingjones.com 020 7610 9933

*This floorplan is for illustration purposes only and is not to scale. The position and size of doors, windows, appliances and other features are approximate.*

*\*Please note, the rent cannot be paid weekly*

South Kensington Lettings! 020 7370 6767 | [lettings.southken@winkworth.co.uk](mailto:lettings.southken@winkworth.co.uk)

[winkworth.co.uk](http://winkworth.co.uk)

**Winkworth**

**for every step...**

Winkworth wishes to inform prospective buyers and tenants that these particulars are a guide and act as information only. All our details are given in good faith and believed to be correct at the time of printing but they don't form part of an offer or contract. No Winkworth employee has authority to make or give any representation or warranty in relation to this property. All fixtures and fittings, whether fitted or not are deemed removable by the vendor unless stated otherwise and room sizes are measured between internal wall surfaces, including furnishings.