



APPLETON WAY, READING, BERKSHIRE, RG2 9RN
£2,600 PER MONTH UNFURNISHED

**FOUR BEDROOM DETACHED HOUSE LOCATED
IN SHINFIELD MEADOWS. AVAILABLE 6TH
SEPTEMBER.**

Reading | 0118 4022 300 | reading@winkworth.co.uk

Winkworth

for every step...

winkworth.co.uk



DESCRIPTION:

Modern four bedroom detached house located in the popular Shinfield Meadows development within a short walk of Shinfield Village providing local amenities and good access to the M4 (Junction 11). The property comprises living room, kitchen/diner and a cloakroom on the ground floor. Two bedrooms, a three piece family bathroom and en suite shower room to the master bedroom occupy the first floor. Two further bedrooms and a shower room are located on the second floor. Further benefits include private rear garden, garage and driveway parking. Available 6th September 2025. Unfurnished.

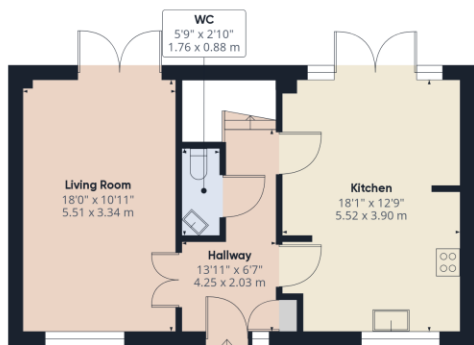
AT A GLANCE

- Four bedroom detached house
- Set over three floors
- Three bathrooms
- Driveway parking & garage
- Private rear garden
- Council tax band F
- Available 6th September
- Unfurnished

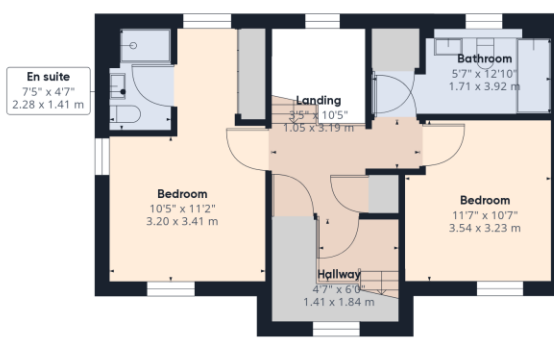




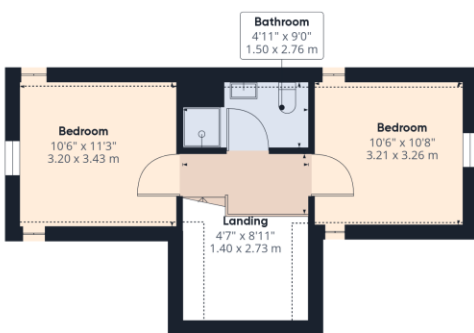




Ground Floor



Floor 1



Floor 2

Approximate total area⁽¹⁾

1389.73 ft²
129.11 m²

Reduced headroom

14.85 ft²
1.38 m²

(1) Excluding balconies and terraces

Reduced headroom
..... Below 5 ft/1.5 m

While every attempt has been made to ensure accuracy, all measurements are approximate, not to scale. This floor plan is for illustrative purposes only.
Calculations are based on RICS IPMS 3C standard.

GIRAFFE 360

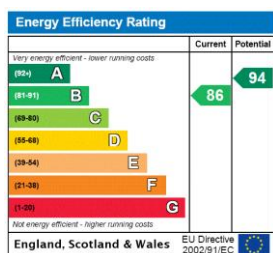
This floorplan is for illustration purposes only and is not to scale. The position and size of doors, windows, appliances and other features are approximate.

Deposit: £3,000.00

Holding Deposit: £600.00

Council Tax Band: F

Where no figures are shown, we have been unable to ascertain the information. All figures that are shown were correct at the time of printing.



Reading | 0118 4022 300 | reading@winkworth.co.uk

Winkworth

for every step...

winkworth.co.uk

Winkworth wishes to inform prospective buyers and tenants that these particulars are a guide and act as information only. All our details are given in good faith and believed to be correct at the time of printing but they don't form part of an offer or contract. No Winkworth employee has authority to make or give any representation or warranty in relation to this property. All fixtures and fittings, whether fitted or not are deemed removable by the vendor unless stated otherwise and room sizes are measured between internal wall surfaces, including furnishings.