



## ADMIRAL HOUSE, LONDON, SW1P

£550,000

LEASEHOLD

### At a glance...

- One Bedroom Flat
- Great Storage
- 1st Floor
- Secure and Convenient Location
- Immaculate Presentation
- Council Tax Band: D

**Winkworth**

for every step...





Energy Efficiency Rating		
	Current	Potential
Very energy efficient - lower running costs		
(92+) <b>A</b>		
(81-91) <b>B</b>		
(69-80) <b>C</b>		
(55-68) <b>D</b>	71	79
(39-54) <b>E</b>		
(21-38) <b>F</b>		
(1-20) <b>G</b>		
Not energy efficient - higher running costs		
England, Scotland & Wales	EU Directive 2002/91/EC	

## ADMIRAL HOUSE, LONDON, SW1P

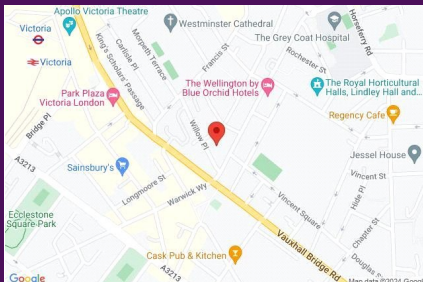
£550,000

LEASEHOLD

Nestled on the first floor of a well-maintained red-brick building, this charming one-bedroom flat exudes a private and serene ambiance throughout. The bay-windowed reception room offers a delightful view of the courtyard and seamlessly connects to the modern kitchen and dining area, creating an inviting space perfect for entertaining guests.

The generously sized double bedroom boasts ample natural light, complemented by its superb wardrobe space. Additionally, the sleek bathroom has undergone recent renovations, lending a contemporary touch to the residence.

Featuring attractive wooden flooring, ample storage solutions and impeccable presentation, this flat presents an ideal opportunity for first-time buyers, rental investors and those seeking a secure and conveniently located base in London.

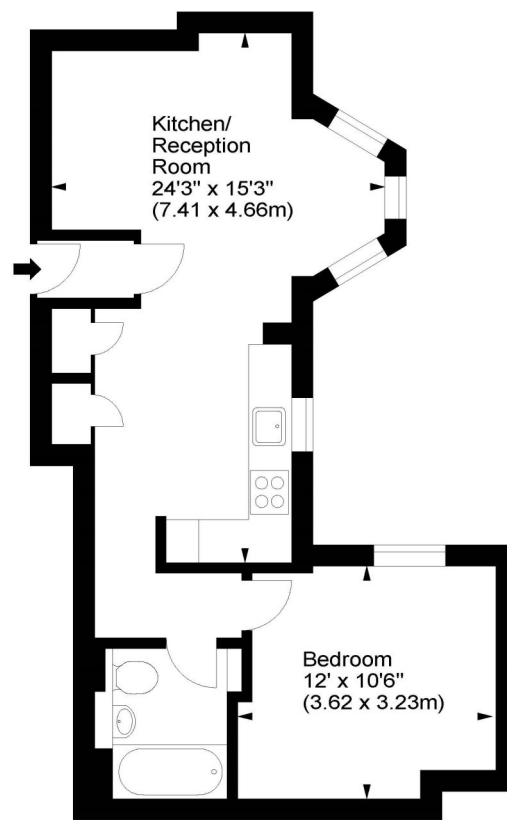


winkworth wishes to inform prospective buyers and tenants that these particulars are a guide and act as information only. All our details are given in good faith and believed to be correct at the time of printing but they don't form part of an offer or contract. No winkworth employee has authority to make or give any representation or warranty in relation to this property. All fixtures and fittings, whether fitted or not are deemed removable by the vendor unless stated otherwise and room sizes are measured between internal wall surfaces - including fire-chimneys.

### Admiral House, Willow Place, SW1



Approx. Gross Internal Area  
480 Sq Ft - 44.59 Sq M



First Floor

For illustration purposes only. Not to scale.  
All measurements are taken and shown at floor level.  
[www.r3photography.co.uk](http://www.r3photography.co.uk) © Photography / Floor Plans / Lease Plans / EPCs



Pimlico & Westminster

020 7828 1786

[pimlico@winkworth.co.uk](mailto:pimlico@winkworth.co.uk)

[winkworth.co.uk/pimlico-westminster](http://winkworth.co.uk/pimlico-westminster)

**Winkworth**

for every step...