



**BELVOIR LODGE, UNDERHILL ROAD, SE22
OFFERS IN EXCESS OF £300,000 LEASEHOLD**

THIS VERY WELL-PRESENTED ONE DOUBLE BEDROOM FLAT IS OFFERED TO THE MARKET CHAIN FREE.

DESCRIPTION:

This very well-presented one double bedroom flat is offered to the market chain free. The property comprises of a lovely light reception room, good-sized double bedroom, a modern bathroom, and a kitchen. The property is located on the very quiet and picturesque Belvoir Road, close to Lordship Lane with the bars, restaurants, and amenities as well as the green open spaces of Dulwich Park. Transport links are provided from either Forest Hill or Honor Oak stations with the East London line or East Dulwich station with its links into London Bridge.

Council Tax Band C

Service Charge: £161/month

Dulwich | 020 8299 2722 | dulwich@winkworth.co.uk

AT A GLANCE

- One Double Bedroom
- Gated Development
- Reception Room
- Separate Kitchen
- Allocated Parking
- Leasehold
- Communal Gardens
- Chain Free

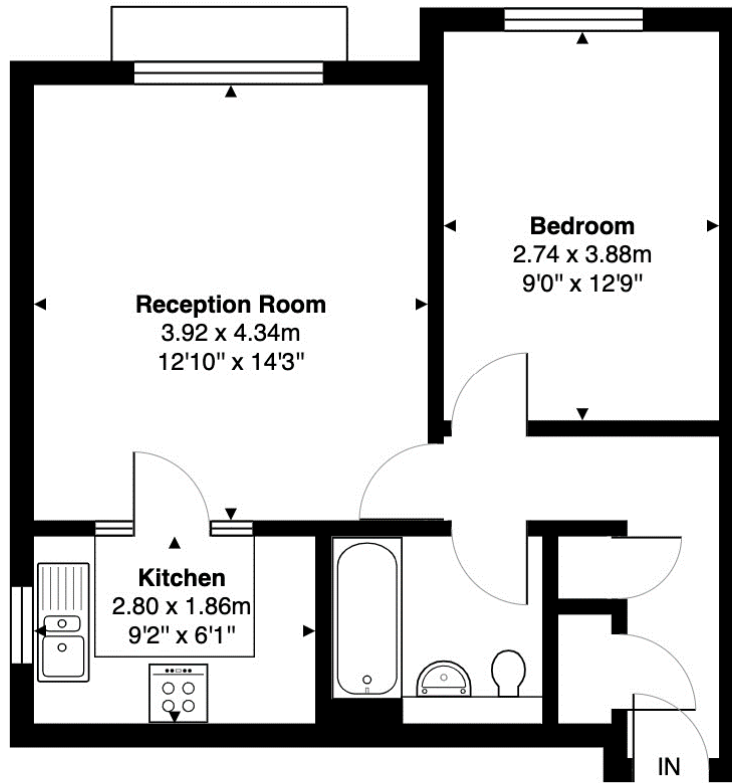
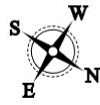
Winkworth





Belvoir Lodge, East Dulwich, SE22

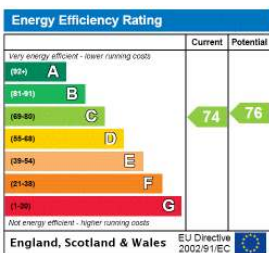
Total Area: 45.1 m² ... 486 ft²



Second Floor

This Floorplan is provided without warranty, of any kind.
Bespoke Plans disclaims any warranty including,
without limitation, satisfaction, quality or accuracy of any dimensions

This floorplan is for illustration purposes only and is not to scale. The position and size of doors, windows, appliances and other features are approximate.



Dulwich | 020 8299 2722 | dulwich@winkworth.co.uk



winkworth.co.uk

See things differently

Winkworth wishes to inform prospective buyers and tenants that these particulars are a guide and act as information only. All our details are given in good faith and believed to be correct at the time of printing but they don't form part of an offer or contract. No Winkworth employee has authority to make or give any representation or warranty in relation to this property. All fixtures and fittings, whether fitted or not are deemed removable by the vendor unless stated otherwise and room sizes are measured between internal wall surfaces, including furnishings.