



MCGLASHON HOUSE, HUNTON STREET, LONDON, E1
£550,000 LEASEHOLD

**A BRIGHT, FOUR BEDROOM, THIRD FLOOR
 APARTMENT WITH PRIVATE BALCONY IN
 SHOREDITCH, E1.**

Shoreditch | 020 7749 7650 | shoreditch@winkworth.co.uk

Winkworth

winkworth.co.uk

See things differently



DESCRIPTION:

Being offered chain free is this rare four double bedroom apartment with outside space. The property is situated on the third floor of this purpose-built development just off Brick Lane in E1. The development benefits from lift access and secure fob entry system.

The property spans over 800sqft and comprises entrance hall with storage cupboard, WC, bathroom with walk in shower, open plan kitchen/reception room with access to the west-facing balcony, allowing the property to be flooded with natural light and finished with four good size double bedrooms.

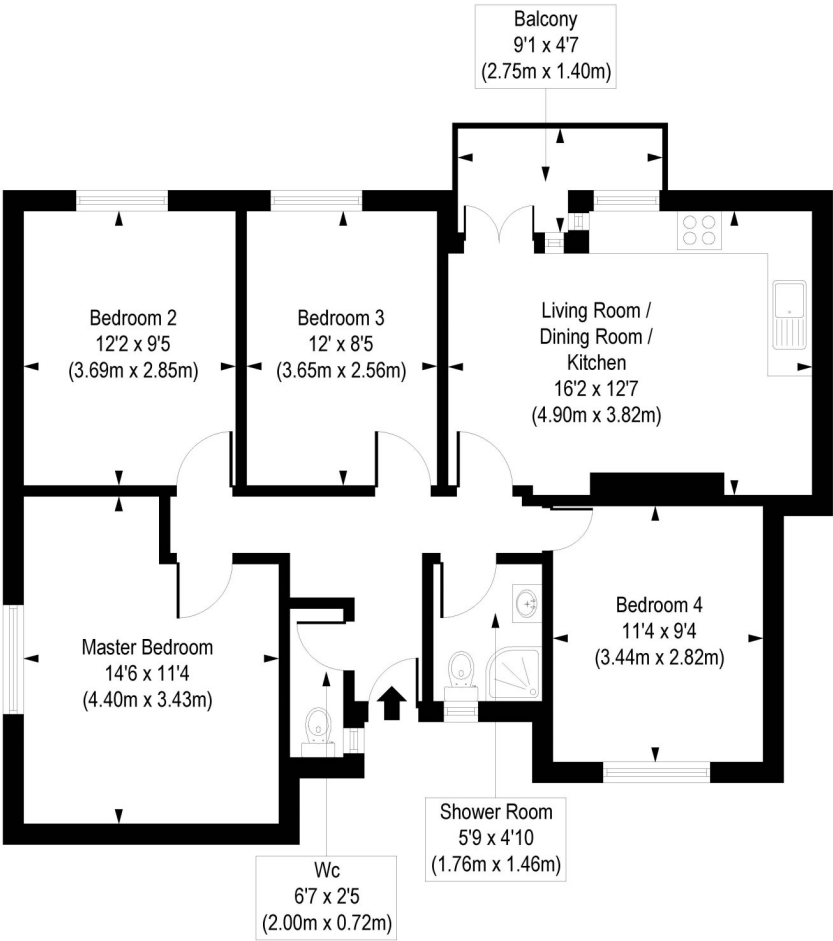
McGlashon House is on the boarder of Spitalfields and Whitechapel, in the heart of the fashionable East End. Whitechapel Station is a short distance away with the new addition of Crossrail. Aldgate East Station and Shoreditch High Street stations are equally within a short commute of the flat giving you access to all corners of the City. You are spoilt for choice when it comes to local amenities with an array of shops, pop ups, cafes, bars and restaurants around Brick Lane, Spitalfields, Shoreditch and Old Street. This property would make a fantastic first-time purchase or buy to let investment.

Winkworth



Winkworth

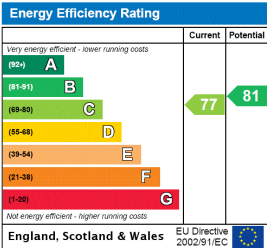
Mcglashon House Hunton Street, E1
 Approx. Gross Internal Floor Area 813 sq. ft / 75.53 sq. m



Third Floor

COMPLIANT WITH RICS CODE OF MEASURING PRACTICE. Floorplan is for illustrative purposes only and is not to scale. Every attempt has been made to ensure the accuracy of the floorplan shown, however all measurements, fixtures, fittings and data shown are an approximate interpretation for illustrative purposes only. Liability for errors, omissions or mis-statement through negligence or otherwise is hereby excluded.

This floorplan is for illustration purposes only and is not to scale. The position and size of doors, windows, appliances and other features are approximate.



Shoreditch | 020 7749 7650 | shoreditch@winkworth.co.uk



winkworth.co.uk

See things differently

Winkworth wishes to inform prospective buyers and tenants that these particulars are a guide and act as information only. All our details are given in good faith and believed to be correct at the time of printing but they don't form part of an offer or contract. No Winkworth employee has authority to make or give any representation or warranty in relation to this property. All fixtures and fittings, whether fitted or not are deemed removable by the vendor unless stated otherwise and room sizes are measured between internal wall surfaces, including furnishings.