



BONCHURCH ROAD, LONDON, W10
£2,145 PER MONTH

NEW BUILD ONE BEDROOM APARTMENT IN PURPOSE BUILT BLOCK

North Kensington | 020 7792 5000 | northkensington@winkworth.co.uk

Winkworth

for every step...

winkworth.co.uk



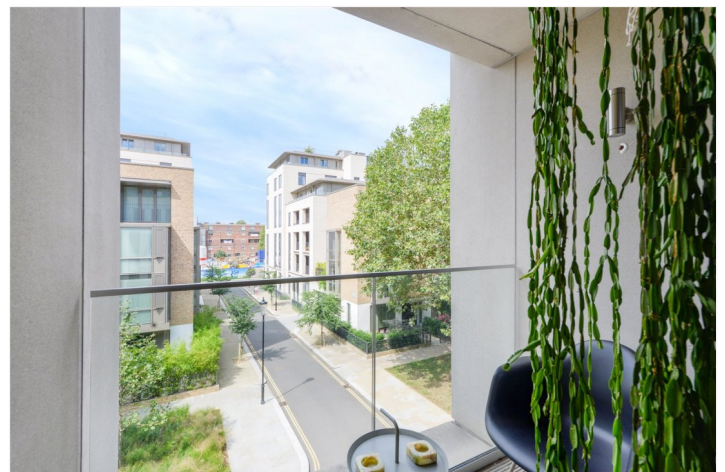
DESCRIPTION: A fantastic one bedroom second floor flat presented in immaculate condition. The open plan kitchen is fully integrated, and the reception area has great space for both a dining table and living room furniture. The living room opens on to a fabulous deep balcony with large enough space for a table and chairs.

This vibrant pocket of London offers an eclectic village-feel in the heart of West London, full of excitement, history, shopping and nightlife.

Portobello Square is one of the most desirable addresses in the area with many independent shops, cafés and restaurants within a short walking distance and excellent transport links to the whole of London including three tube stations nearby and a large choice of buses. The development is tucked away behind the ever-fashionable Golborne Road and on the edge of the world famous Portobello Road. EPC Rating C

AT A GLANCE

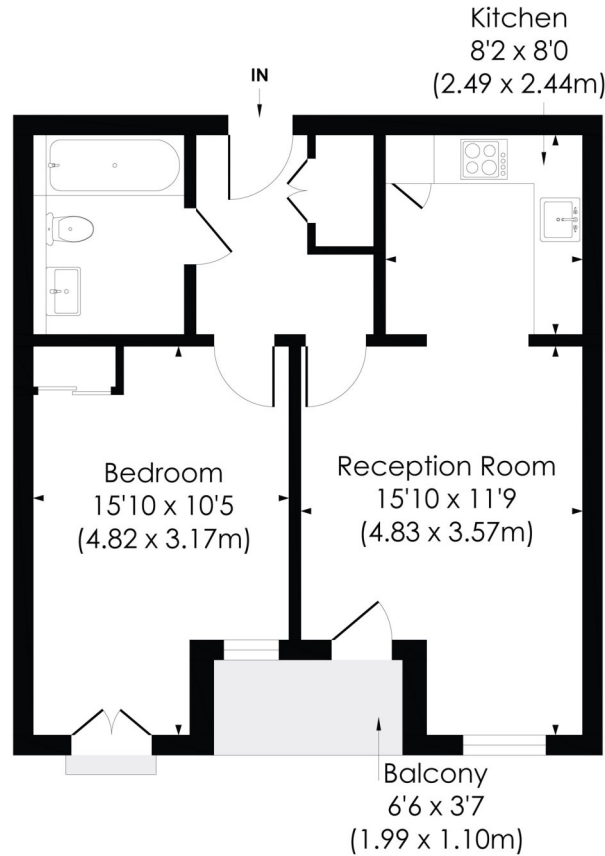
- MODERN
- NEW BUILD
- BALCONY
- AMAZING LOCATION
- CLOSE TO TRANSPORT LINKS
- CLOSE TO AMENITIES





BONCHURCH ROAD, W6

Approx. Gross Internal Floor Area
519 Sq. ft/48.18 Sq. m



SECOND FLOOR

pixangle
PROPERTY MARKETING

This floor plan has been prepared for the purpose of illustration only in accordance with the latest RICS code of measuring practice and is not to scale. All measurements and areas are approximate and whilst every effort has been made to ensure the accuracy of the plan contained here, no responsibility is taken for any error, omission or misstatement.

© Pixangle Property Marketing Ltd. info@pixangle.com Tel: 0208 870 2118

This floorplan is for illustration purposes only and is not to scale. The position and size of doors, windows, appliances and other features are approximate.

North Kensington | 020 7792 5000 | northkensington@winkworth.co.uk

Winkworth

for every step...

winkworth.co.uk

Winkworth wishes to inform prospective buyers and tenants that these particulars are a guide and act as information only. All our details are given in good faith and believed to be correct at the time of printing but they don't form part of an offer or contract. No Winkworth employee has authority to make or give any representation or warranty in relation to this property. All fixtures and fittings, whether fitted or not are deemed removable by the vendor unless stated otherwise and room sizes are measured between internal wall surfaces, including furnishings.