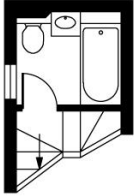


MONTPELIER WALK | SW7

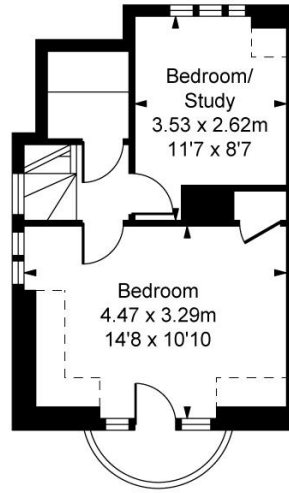


Winkworth

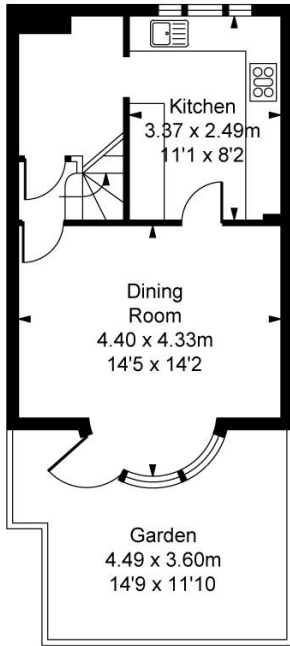
Montpelier Walk, SW7
 Approximate Gross Internal Area
133.14 sq m / 1,433 sq ft
 (Including restricted height
 under 1.5m [-----])



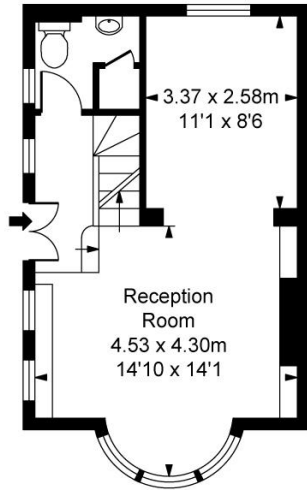
First Floor Half Landing
 Approximate Gross Internal Area
 4.92 sq m / 53 sq ft



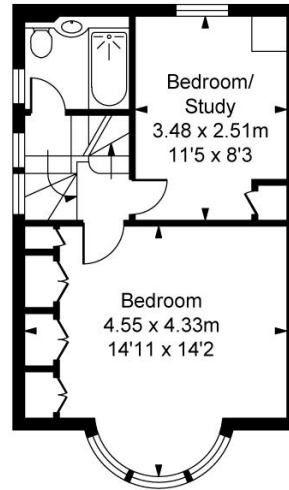
Second Floor
 Approximate Gross Internal Area
 29.62 sq m / 319 sq ft



Lower Ground Floor
 Approximate Gross Internal Area
 32.36 sq m / 348 sq ft



Raised Ground Floor
 Approximate Gross Internal Area
 33.02 sq m / 355 sq ft



First Floor
 Approximate Gross Internal Area
 33.22 sq m / 358 sq ft



ILLUSTRATION FOR IDENTIFICATION PURPOSES ONLY
 ALL MEASUREMENTS ARE MAXIMUM, AND INCLUDE WINDOW BAYS AND WARDROBES WHERE APPLICABLE
 THIS PLAN MUST NOT BE REPRODUCED BY ANY OTHER PERSON WITHOUT PERMISSION.

Montpelier Walk SW7

RENT: £1,385pw / £6,000pcm

- 4 Bedroom House
- Private Patio
- End of Terrace
- Unfurnished
- Close to Hyde Park

LOCAL AUTHORITY: City of Westminster

COUNCIL TAX BAND: Band H



Energy Efficiency Rating		Current	Potential
Very energy efficient - lower running costs			
(92+)	A		83
(81-91)	B		
(69-80)	C		
(55-68)	D		
(39-54)	E	53	
(21-38)	F		
(1-20)	G		
Not energy efficient - higher running costs			
England, Scotland & Wales		EU Directive 2002/91/EC	



Knightsbridge & Chelsea | 020 7589 6616
knightsbridge@winkworth.co.uk



for every step...

winkworth.co.uk

Winkworth wishes to inform prospective buyers and tenants that these particulars are a guide and act as information only. All our details are given in good faith and believed to be correct at the time of printing but they don't form part of an offer or contract. No Winkworth employee has authority to make or give any representation or warranty in relation to this property. All fixtures and fittings, whether fitted or not are deemed removable by the vendor unless stated otherwise and room sizes are measured between internal wall surfaces, including furnishings.