



YORKE ROAD, DARTMOUTH
£925,000 FREEHOLD

'PRIME' YORKE ROAD

Dartmouth | 01803 832288 | dartmouth@winkworth.co.uk 3a Market Street,
 Dartmouth, TQ6 9QE

Winkworth

for every step...

winkworth.co.uk



SUMMARY: A DELIGHTFUL FAMILY HOME WITH VIEWS DOWN THE VALLEY TO THE RIVER DART.

ACCOMMODATION: Entrance Hall. Cloakroom. Kitchen/Dining Room. Sitting Room. Garden Room. Utility Room. Three Bedrooms, (One With En-Suite). Family Bathroom. Garden. Garage.

DIRECTIONS: From Dartmouth town centre proceed up College Way passing the Britannia Royal Naval College on your right-hand side. Proceed straight over the mini roundabout and turn first left into Crossparks. The property will be found on the left-hand side.

DESCRIPTION: Often requested and seldom available. Wonderful views over the River Dart and countryside. A house that is ideal as a family home or for a couple who entertain and love weekend parties. The huge deck is the ideal vantage point for you and your guests to view the Dartmouth Regatta fireworks. A double garage with great storage and potential above.

THE ACCOMMODATION COMPRISES:

PORCH: A spacious area offering protection before entering the house:

ENTRANCE HALL: Plenty of space to meet and farewell your guests. Gracious and spacious setting the tone for this wonderful home. Lots of scope to accommodate the family heirlooms and paintings.

CLOAKROOM: Tucked away under the stairs with a W.C. and wash hand basin.

SITTING ROOM: A large room with double doors leading onto the deck.

KITCHEN: Open plan and designed to take advantage of the vista through the family area to the dining room with river views. There is plenty of bench space for food preparation and integrated appliances to include two full sized 'Neff' fan ovens, 'Neff' induction hon, extractor fan which will spoil the chef when conjuring up those dinner party delights, and integrated 'Bosch' dishwasher. Opening to:

FAMILY/INFORMAL DINING ROOM: This is open to the kitchen and opens out onto the deck and garden, it has a wood burner. The views are magnificent.

UTILITY ROOM/BOOT ROOM: Adjacent to the kitchen.

Stairs rise from the entrance hall to the:

FIRST FLOOR LANDING.

FAMILY BATHROOM: A four-piece suite comprising bath, separate shower, W.C. and wash hand basin. Heated towel rail. There is plenty of storage.

PRINCIPAL BEDROOM: With bay window and fitted wardrobe. Views over the garden and down the valley to the River Dart and Kingswear

beyond.

EN-SUITE SHOWER ROOM: With double shower cubicle, wash hand basin and W.C. Heated towel rail.

BEDROOM 2: A light and sunny double room with fitted wardrobes. Wonderful views to the town and river

BEDROOM 3: Another double with fitted wardrobes.

OUTSIDE: A delightful deck takes full advantage of this wonderful position to the front of the house. The lower terrace gives access to Yorke Road. The summerhouse/studio with power and lighting is an ideal retreat or could be a home office.

GARAGE: A double garage with power and lighting. Wonderful storage and potential with the appropriate planning to convert the upper floor to accommodation. Extra bedroom or home office maybe?

OUTSIDE: A lovely established garden with a selection of mature shrubs, trees and an herbaceous border. The garden is terraced and has been developed with ease of maintenance in mind. The green fingered enthusiast will love this garden and can take it in any direction they wish.

POSTCODE: TQ6 9HN

EPC RATING: C

COUNCIL TAX BAND: F (Currently £3797.28 2025/26)

SERVICES: All mains' services are connected.

OWNERS COMMENTS

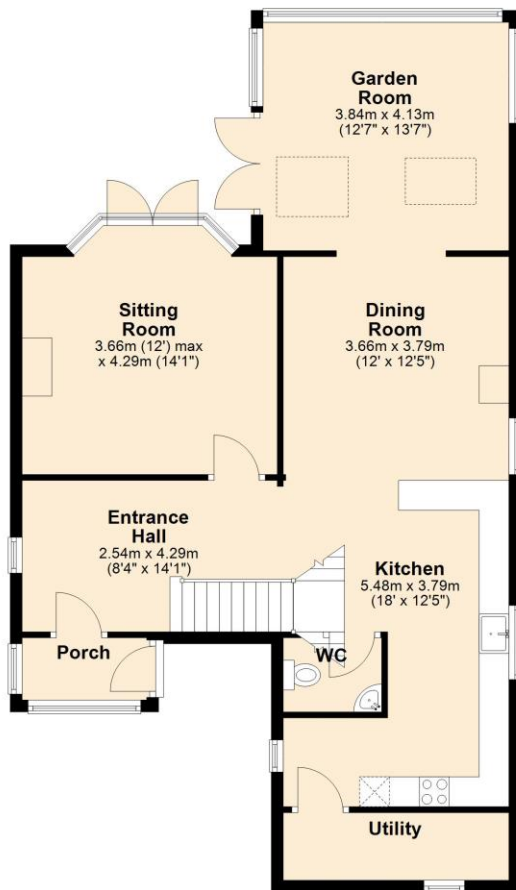
We have loved the exceptional views of the town, River Dart, and Kingswear, and when the sun is out, we bask in it all day long, as it goes around the house. Nearly every corner of the garden is private, and the sweeping deck has been wonderful for outdoor entertaining. The views of the river and town have been a wonderful backdrop for our summer luncheons, and late afternoon sundowners. We found the easy walk to the supermarkets, schools, petrol station and medical centre a real bonus! Not to mention the swimming pools (indoor and out), as well as the fitness centre. Our younger visitors have really enjoyed these amenities!

The double garage has been a real asset, big enough for 2 cars, and with marvellous storage. With the appropriate planning permission, the upstairs of the garage could make excellent extra accommodation.



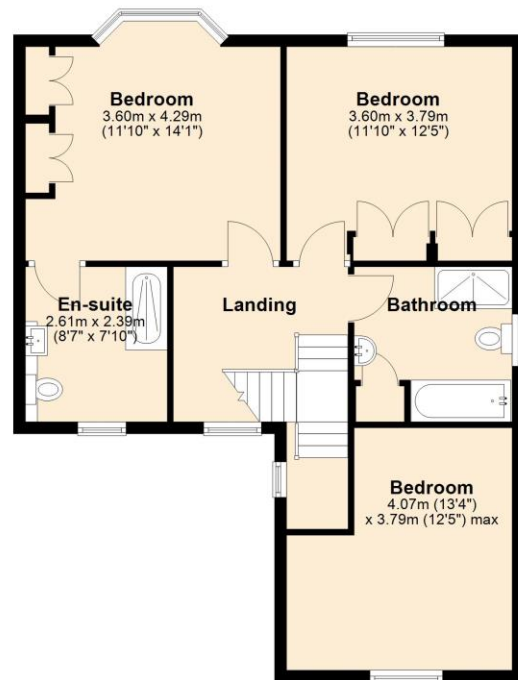
Ground Floor

Approx. 86.5 sq. metres (931.5 sq. feet)



First Floor

Approx. 67.7 sq. metres (728.7 sq. feet)



Total area: approx. 154.2 sq. metres (1660.2 sq. feet)

This floorplan is for illustration purposes only and is not to scale. The position and size of doors, windows, appliances and other features are approximate.

Score	Energy rating	Current	Potential
92+	A		
81-91	B		
69-80	C		
55-68	D		
39-54	E		
21-38	F		
1-20	G		

Tenure: Freehold

Term: 0 year and 0 months

Service Charge: £0 per annum

Ground Rent: £ 0 Annually (subject to increase)

Council Tax Band: F

Where no figures are shown, we have been unable to ascertain the information. All figures that are shown were correct at the time of printing.

Dartmouth | 01803 832288 | dartmouth@winkworth.co.uk
3a Market Street, Dartmouth, TQ6 9QE

Winkworth

for every step...

winkworth.co.uk

Winkworth wishes to inform prospective buyers and tenants that these particulars are a guide and act as information only. All our details are given in good faith and believed to be correct at the time of printing but they don't form part of an offer or contract. No Winkworth employee has authority to make or give any representation or warranty in relation to this property. All fixtures and fittings, whether fitted or not are deemed removable by the vendor unless stated otherwise and room sizes are measured between internal wall surfaces, including furnishings.