



## Rosary Gardens, South Kensington, London, SW7

£692 per week\* / £2,998.67 per month – Unfurnished

A beautifully refurbished one bedroom flat, located on the 2nd floor of this attractive period building.

1 Bedroom | 1 Reception Room | 1 Bathroom | Second Floor Flat | 590 Approx sq ft | Tax Band

APPLICANT FEES MAY BE APPLICABLE  
DEPOSIT OF 5 WEEKS' RENT  
HOLDING DEPOSIT OF 1 WEEK'S RENT

**Winkworth**

[winkworth.co.uk](https://www.winkworth.co.uk)

for every step...



## DESCRIPTION

This wonderful apartment is stylishly designed, with wooden floors throughout and contemporary kitchen and bathroom. The property offers a spacious and bright reception room, separate kitchen, large bedroom with built in storage and bathroom with shower over bath.

Available from mid-August on an unfurnished basis.

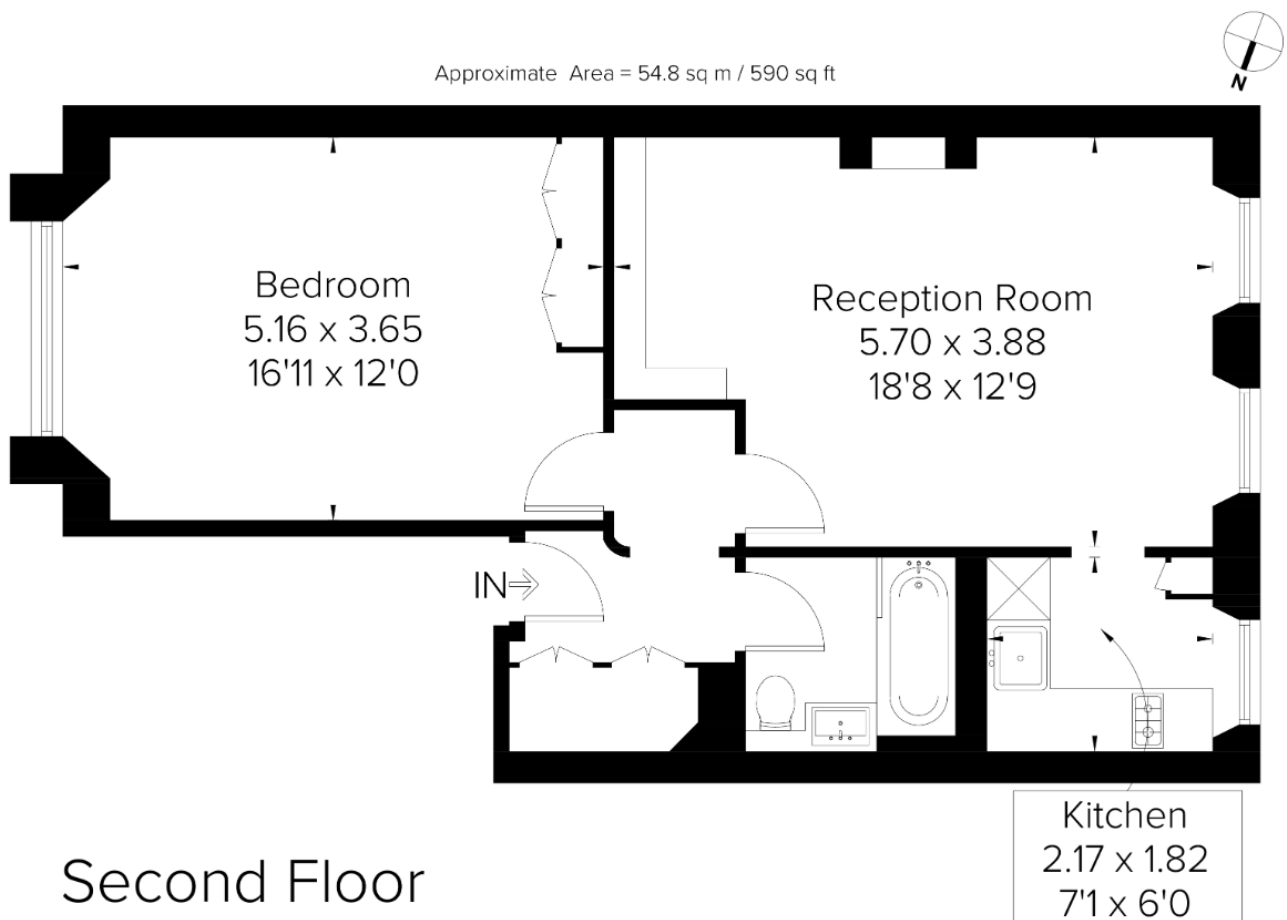
## ACCOMMODATION

1 Bedrooms, 1 Reception Room, 1 Bathroom, Second Floor, Unfurnished, 590 Approx Sq ft

## COUNCIL TAX BAND

TBC





*This floorplan is for illustration purposes only and is not to scale. The position and size of doors, windows, appliances and other features are approximate.*

*\*Please note, the rent cannot be paid on a weekly basis*

**South Kensington Lettings | 020 7370 6767 | [lettings.southken@winkworth.co.uk](mailto:lettings.southken@winkworth.co.uk)**

**Winkworth**

**[winkworth.co.uk](http://winkworth.co.uk)**

**for every step...**

Winkworth wishes to inform prospective buyers and tenants that these particulars are a guide and act as information only. All our details are given in good faith and believed to be correct at the time of printing but they don't form part of an offer or contract. No Winkworth employee has authority to make or give any representation or warranty in relation to this property. All fixtures and fittings, whether fitted or not are deemed removable by the vendor unless stated otherwise and room sizes are measured between internal wall surfaces, including furnishings.