



LODORE GARDENS, KINGSBURY, LONDON, NW9  
**£600,000 FREEHOLD**

## CHAIN FREE THREE BEDROOM SEMI DETACHED FAMILY HOME

Kingsbury | 020 8204 0000 | [kingsbury@winkworth.co.uk](mailto:kingsbury@winkworth.co.uk)

**Winkworth**

[winkworth.co.uk](http://winkworth.co.uk)

See things differently

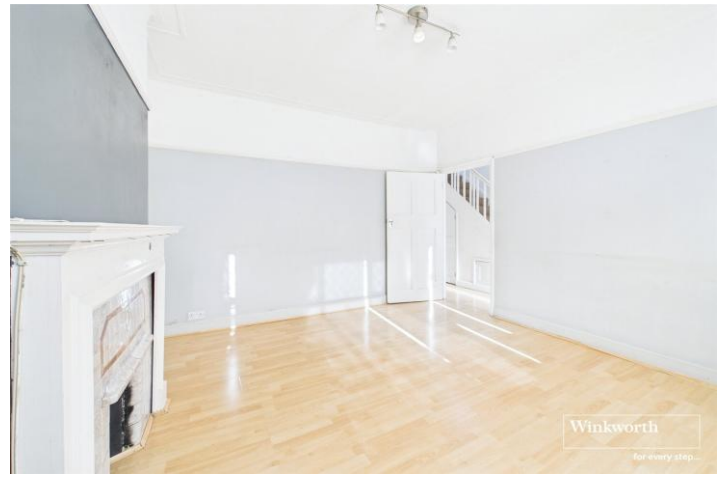




A charming and fondly loved three-bedroom semi-detached home, perfectly positioned within the sought-after Springfield Estate. This delightful property offers the perfect balance of comfort, convenience, and potential — ideal for growing families or those looking to create their dream home in a highly desirable location. Families will appreciate the property's excellent school catchment, including Oliver Goldsmith, The Hyde, and Bnos Beis Yaakov primary schools, as well as Kingsbury High School. For commuters, Hendon Thameslink (0.7 miles), Colindale Station (Northern Line, 0.8 miles), and Kingsbury Station (Jubilee Line, 1.1 miles) provide superb access into Central London and beyond. Internally, the home features two bright and spacious reception rooms, a functional kitchen, two generous double bedrooms, a further single bedroom, and a family bathroom. Externally, enjoy a beautifully maintained rear garden perfect for summer entertaining, along with off-street parking to the front and a garage. With scope to extend (STPP), this property presents an exciting opportunity to add value and tailor the space to your family's needs. An early viewing is highly recommended to fully appreciate the warmth, potential, and location this home has to offer.

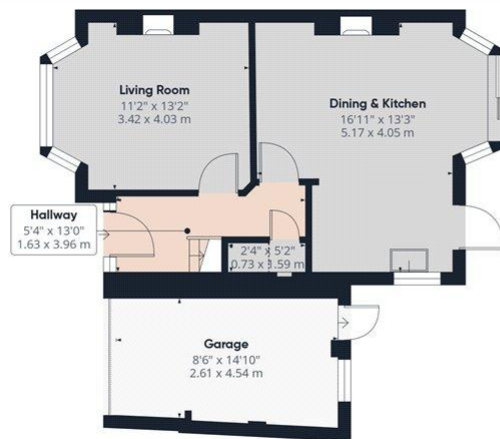


**Winkworth**



**Winkworth**





Ground Floor



Floor 1

Approximate total area<sup>(1)</sup>

984 ft<sup>2</sup>  
91.3 m<sup>2</sup>

Reduced headroom

6 ft<sup>2</sup>  
0.6 m<sup>2</sup>

(1) Excluding balconies and terraces

Reduced headroom

Below 5 ft/1.5 m

Calculations reference the RICS IPMS 3C standard. Measurements are approximate and not to scale. This floor plan is intended for illustration only.

GIRAFFE360

This floorplan is for illustration purposes only and is not to scale. The position and size of doors, windows, appliances and other features are approximate.

Score	Energy rating	Current	Potential
92+	A		
81-91	B		86 B
69-80	C		
55-68	D		
39-54	E	52 E	
21-38	F		
1-20	G		

Kingsbury | 020 8204 0000 | kingsbury@winkworth.co.uk

Winkworth

winkworth.co.uk

See things differently

Winkworth wishes to inform prospective buyers and tenants that these particulars are a guide and act as information only. All our details are given in good faith and believed to be correct at the time of printing but they don't form part of an offer or contract. No Winkworth employee has authority to make or give any representation or warranty in relation to this property. All fixtures and fittings, whether fitted or not are deemed removable by the vendor unless stated otherwise and room sizes are measured between internal wall surfaces, including furnishings.