



LORDSHIP LANE, EAST DULWICH, SE22

OFFERS OVER £600,000 SHARE OF FREEHOLD

## A STUNNING, CHARACTERFUL TWO BEDROOM GROUND FLOOR GARDEN FLAT NESTLED BETWEEN DULWICH VILLAGE AND EAST DULWICH.

### DESCRIPTION:

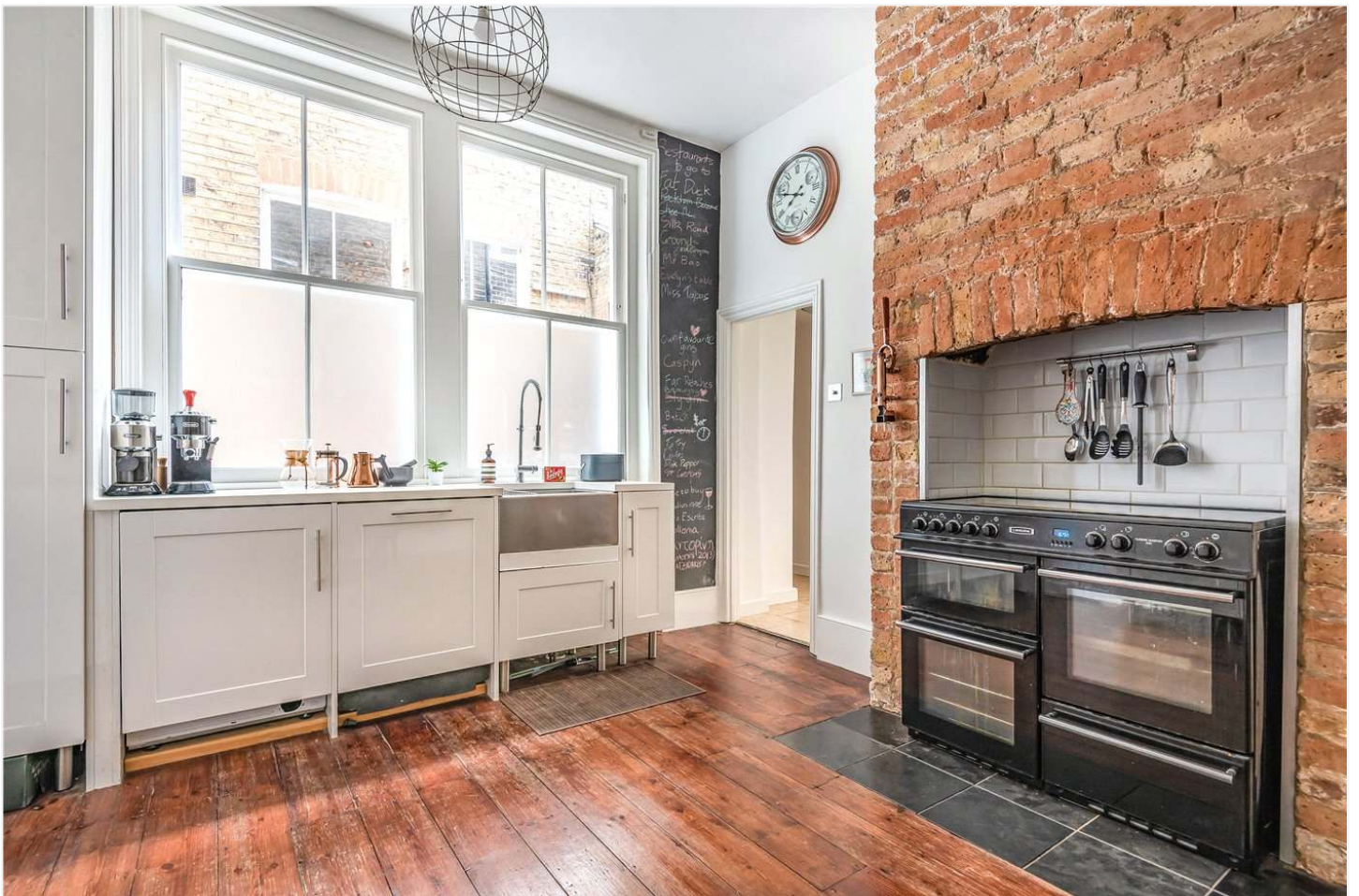
A stunning, characterful two-bedroom ground floor garden flat nestled between Dulwich Village and East Dulwich. This charming, large two double bedroom ground floor garden flat is offered to the market in great condition. Boasting original wood flooring, high ceilings, stunning fireplaces and a large West facing sunny garden. The property comprises a very large master to the front, set within the original bay window and boasting large built in wardrobes. There is a walk-in shower room and WC, a large kitchen diner and a very large reception to rear with French doors leading out to a large patio and gardens. The property is ideally situated to benefit from easy access to Lordship Lane and Dulwich Village. School catchments are in abundance with Harris and Heber to name a couple. Transport links are provided via Forest Hill, East Dulwich and Denmark Hill, for links to the overground and direct links to London Bridge.

### AT A GLANCE

- Two Bedrooms
- Ground Floor
- Bright & Airy Reception Room
- Original Features
- Kitchen-Diner
- Large Patio
- Chain Free

**Winkworth**







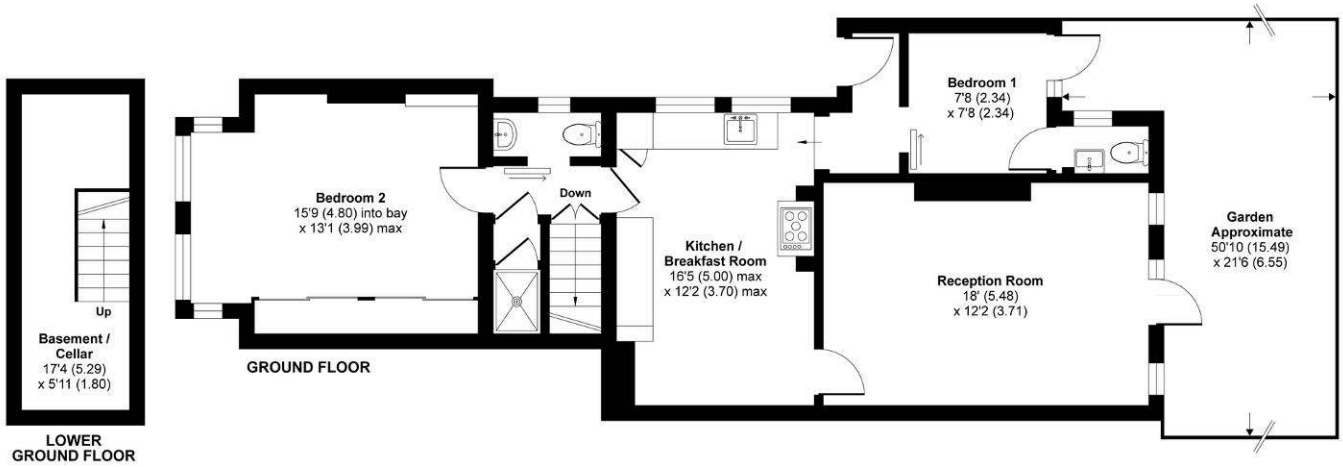




# Lordship Lane, London, SE22

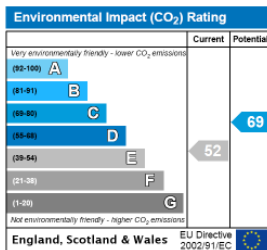
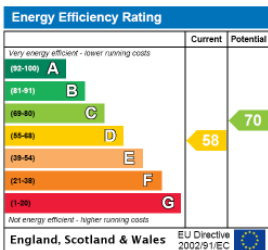
Approximate Area = 950 sq ft / 88.3 sq m (includes cellar)

For identification only - Not to scale



Floor plan produced in accordance with RICS Property Measurement Standards incorporating International Property Measurement Standards (IPMS2 Residential). © nichecom 2020. Produced for Movewise. REF: 661797

This floorplan is for illustration purposes only and is not to scale. The position and size of doors, windows, appliances and other features are approximate.



Dulwich | 020 8299 2722 | [dulwich@winkworth.co.uk](mailto:dulwich@winkworth.co.uk)

**Winkworth**

[winkworth.co.uk](http://winkworth.co.uk)

See things differently

Winkworth wishes to inform prospective buyers and tenants that these particulars are a guide and act as information only. All our details are given in good faith and believed to be correct at the time of printing but they don't form part of an offer or contract. No Winkworth employee has authority to make or give any representation or warranty in relation to this property. All fixtures and fittings, whether fitted or not are deemed removable by the vendor unless stated otherwise and room sizes are measured between internal wall surfaces, including furnishings.