



CHARLWOOD ROAD, SW15
£1,950 PER MONTH FURNISHED

BEAUTIFULLY PRESENTED ONE-BEDROOM DETACHED ANNEX ON THE SOUGHT-AFTER CHARLWOOD ROAD, ON THE DOORSTEP OF PUTNEY HIGH STREET.

Putney | 020 8788 9295 | putney@winkworth.co.uk

Winkworth

for every step...

winkworth.co.uk



DESCRIPTION:

Nestled on the sought-after Charlwood Road, on the doorstep of Putney High Street, this beautifully presented one-bedroom detached annex offers stylish and convenient living in one of South West London's most desirable areas.

Immaculately maintained and filled with natural light and contemporary interiors, the property is offered fully furnished and boasts a private gated entrance leading to a low-maintenance patio area — perfect for storing bikes.

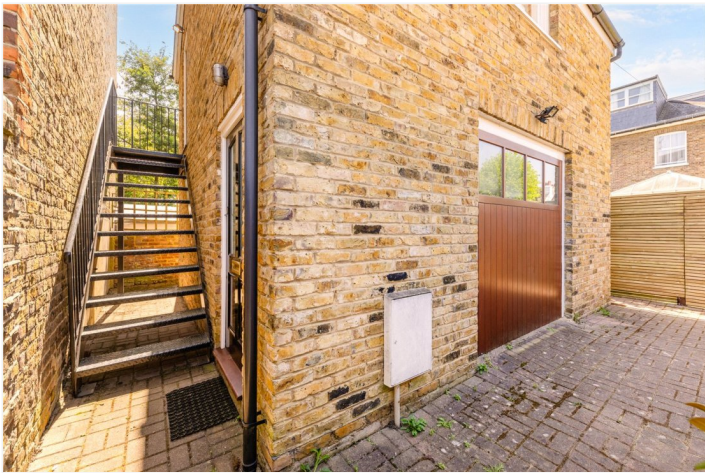
Inside, the annex is thoughtfully laid out to maximise space and comfort, ideal for professional a professional single occupant or couple.

Excellent transport links are close by, with Putney Overground and Putney Bridge Underground stations within easy walking distance, offering swift access into Central London and beyond. It is also just minutes away from the Thames River and Putney Rowing clubs.

This is a rare opportunity to rent a unique and high-quality property in an unbeatable location.

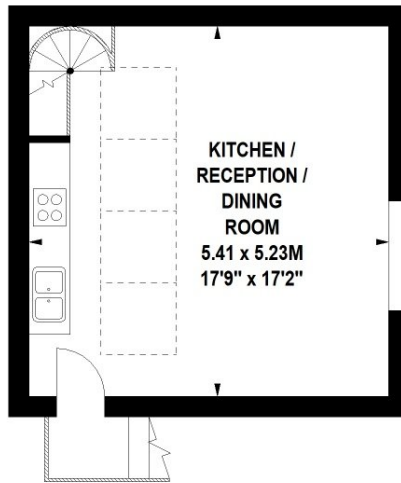
ACCOMMODATION

Long Let, 1 Bedrooms, 1 Reception Rooms, 1
Bathrooms, House, Detached, Garden, Patio,
Modern, Town/City, Furnished, 614 Approx Sq Ft

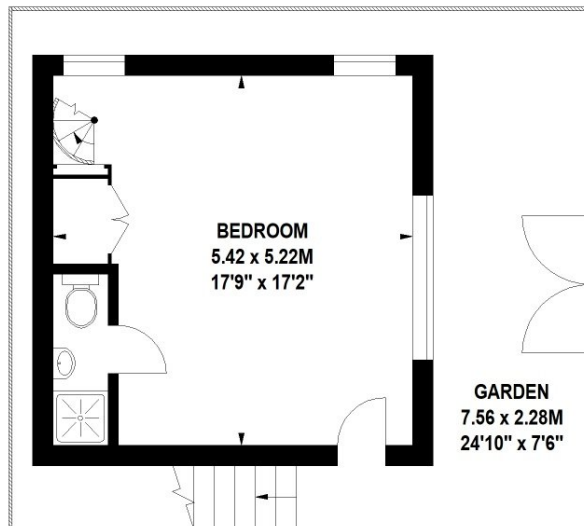


Annexe, Charlwood Road, SW15

Approximate Gross Internal Area 57 sq.m / 614 sq. ft



First Floor



Ground Floor

Floor Plan produced for WINKWORTH by Mays Floorplans © . Tel 020 3397 4594
Illustration for identification purposes only, not to scale
All measurements are maximum, and include wardrobes and window bays where applicable

This floorplan is for illustration purposes only and is not to scale. The position and size of doors, windows, appliances and other features are approximate.

Deposit: £0.00

Holding Deposit:

Council Tax Band:

Where no figures are shown, we have been unable to ascertain the information. All figures that are shown were correct at the time of printing.

Winkworth

for every step...

winkworth.co.uk

Winkworth wishes to inform prospective buyers and tenants that these particulars are a guide and act as information only. All our details are given in good faith and believed to be correct at the time of printing but they don't form part of an offer or contract. No Winkworth employee has authority to make or give any representation or warranty in relation to this property. All fixtures and fittings, whether fitted or not are deemed removable by the vendor unless stated otherwise and room sizes are measured between internal wall surfaces, including furnishings.