



Southwell Road, London, SE5

£495,000 Share of Freehold

A charming two-bedroom, ground floor flat with a beautiful South-east facing garden. This lovely Victorian terrace is only 480 metres from Loughborough Station. EPC Rating D.

LOCATION

The property is located on Southwell Road which is equidistant to Camberwell and Brixton. Ruskin Park is a 5-minute walk away and local shops are also within close walking distance.

DESCRIPTION

As you enter this flat on the ground floor you arrive into the hallway with wooden floors painted white and an abundance of under stair storage.

To the front of the building you have the reception room where you are greeted by a stunning Victorian fireplace and two sash windows both with plantation shutters.

Heading back down the hallway on the left is the master bedroom which is a great size and also had a stunning fireplace.

Next to the master bedroom is the second bedroom, which is big enough for a double bed but could also double up as a study or nursery.

Towards the back of the property is the kitchen, which has space for a dining table. The kitchen is modern and fully fitted with wooden flooring and French doors which lead out into the garden. At the rear of the kitchen is the bathroom which has a bath with overhead shower, sink and w/c.

The garden has raised decking at the back which stretches the width of the property and a perfect space for entertaining. The garden also has outside storage, big enough for a bike.

LOCAL AUTHORITY

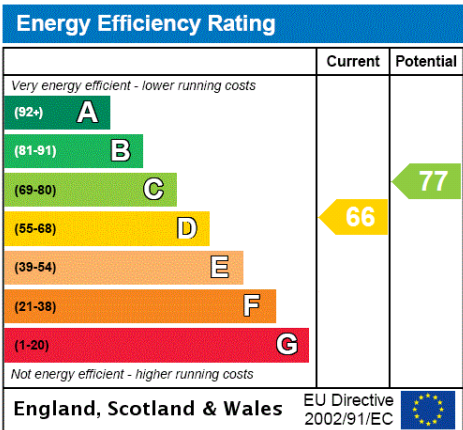
Lambeth, London
Council Tax Band C

TENURE

Share of Freehold: underlying lease of 999 years from 1 August 2017
Ground Rent: nil
Service Charge: costs for maintenance and repair are shared equally between the three flats in the building on an ad hoc basis

DIRECTIONS

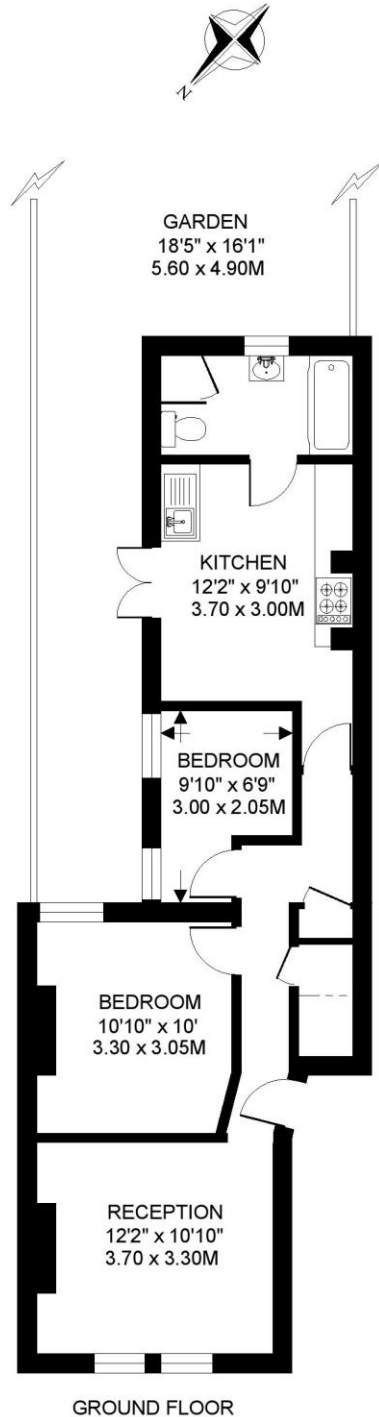
Loughborough Station is approximately 480 meters away. Denmark Hill Station is approximately 800 meters away.





SOUTHWELL ROAD. SE5
2 BEDROOM FLAT

Approximate gross floor area
585 SQ.FT. / 54.3 SQ.M.



This floorplan is for illustration purposes only and is not to scale. The position and size of doors, windows, appliances and other features are approximate.

Kennington | 020 7587 0600 | kennington@winkworth.co.uk