



CHASEFIELD ROAD, SW17

£875,000 FREEHOLD

A SPECTACULAR AND WELL PRESENTED FOUR BEDROOM FAMILY HOME

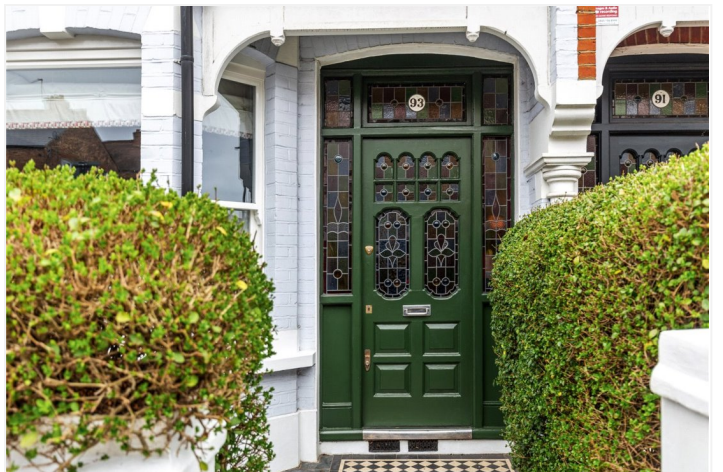
Tooting | 020 8767 5221 | tooting@winkworth.co.uk



DESCRIPTION:

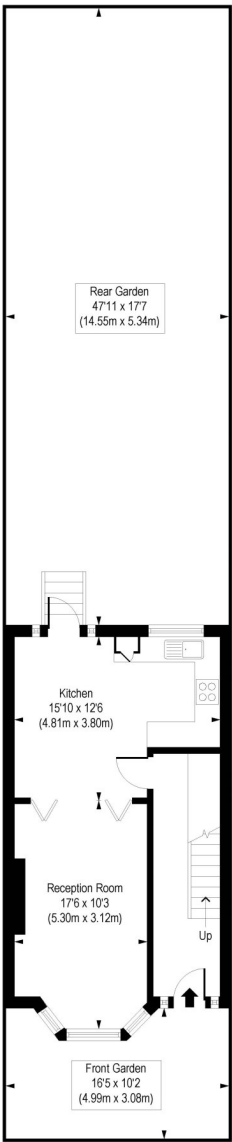
A spectacular four-bedroom family home that has been tastefully decorated and extended into the loft . This stunning period house offers a beautiful blend of modern living and period features throughout. Upon entering the house via the front garden, you will find a beautiful entrance hall with stained glass front door and intricate cornicing that leads into the formal reception room which has a stunning focal fireplace and bay window. To the rear you will find a further reception/dining area which leads the way through to a stunning kitchen which boasts integral appliances and double doors into the south west facing garden. The rear garden has a real sense of privacy and offers plentiful space to entertain on the large patio area. On the first floor you will find two double bedrooms, large single bedroom and a modern family bathroom. The second floor houses the master bedroom which offer views across the skyline via the Juliet balcony and a large en-suite shower room.

Chasefield Road is ideally positioned for access in and out of Central London, as well as providing easy access to both Tooting underground (Northern Line) and Tooting overground stations. The shopping, dining and entertainment facilities of Tooting high street are within a short distance including the famous Tooting Markets. The properties location further benefits from being within a short walk of Tooting Bec Common. The house is future-proofed and would make a fantastic family home for decades to come.



Chasefield Road, SW17

Approx. Gross Internal Floor Area 1261 sq. ft / 117.23 sq. m



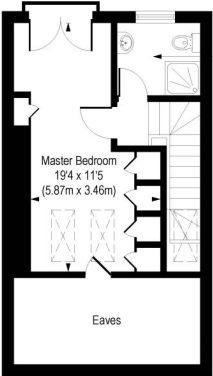
Rear Garden
47'11 x 17'7
(14.55m x 5.34m)

Kitchen
15'10 x 12'6
(4.81m x 3.80m)

Reception Room
17'6 x 10'3
(5.30m x 3.12m)

Front Garden
16'5 x 10'2
(4.99m x 3.08m)

Ground Floor
Gross Internal
Floor Area 459 sq ft

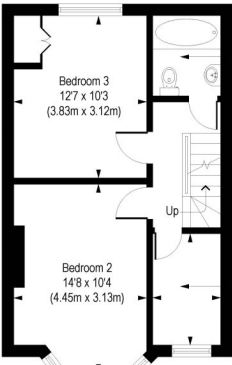


Shower Room
6'5 x 5'8
(1.96m x 1.71m)

Master Bedroom
19'4 x 11'5
(5.87m x 3.46m)

Eaves

Second Floor
Gross Internal
Floor Area 381 sq ft



Bathroom
6'3 x 5'3
(1.89m x 1.59m)

Bedroom 3
12'7 x 10'3
(3.83m x 3.12m)

Bedroom 2
14'8 x 10'4
(4.45m x 3.13m)

Bedroom 4
8'8 x 5'3
(2.62m x 1.59m)

First Floor
Gross Internal
Floor Area 421 sq ft

COMPLIANT WITH RICS CODE OF MEASURING PRACTICE. Floorplan is for illustrative purposes only and is not to scale. Every attempt has been made to ensure the accuracy of the floorplan shown, however all measurements, fixtures, fittings and data shown are an approximate interpretation for illustrative purposes only. Liability for errors, omissions or mis-statement through negligence or otherwise is hereby excluded.

This floorplan is for illustration purposes only and is not to scale. The position and size of doors, windows, appliances and other features are approximate.