



LAURA TERRACE, LONDON, N4  
**£1,350,000 FREEHOLD**

**A BEAUTIFUL, FOUR BEDROOM FAMILY HOME WITH STUNNING GARDEN AND POTENTIAL TO EXTEND STPP.**

Highbury | 0207 989 7000 | [highbury@winkworth.co.uk](mailto:highbury@winkworth.co.uk)

**Winkworth**

[winkworth.co.uk](http://winkworth.co.uk)

See things differently





## DESCRIPTION:

A charming, four-bedroom, two-bathroom family home with tremendous potential to extend subject to planning permission. Standing at 1,725 sqft, the property offers a wealth of charm throughout and offers any potential purchaser to put their own stamp on the house. Accommodation comprises of two wonderfully bright double reception rooms with a beautiful fireplace and solid wood flooring. The rear of the house occupies a spacious kitchen, with ample dining space and sliding doors out to the most sensational, private garden, complete with patioed and grassed area, perfect for al fresco dining. All four bedrooms are genuine doubles, the first floor including the master bedroom with built in storage, and two further double bedrooms. The fourth bedroom can be found in the basement, along with an additional shower room, while the property is completed with a family bathroom on the first floor.

Brownswood Road provides easy access to the green spaces of Clissold Park, Finsbury Park and Woodberry Wetland nature reserve. A variety of shops, independent cafés and eateries are located close by on Mountgrove Road/Blackstock Road and the surrounding Highbury area is a short walk away. Excellent public transport links are nearby, including Finsbury Park Station (Victoria, Piccadilly, and Overground rail services), Arsenal Underground Station (Piccadilly Line), and Highbury & Islington Station (Victoria and National Rail Lines).

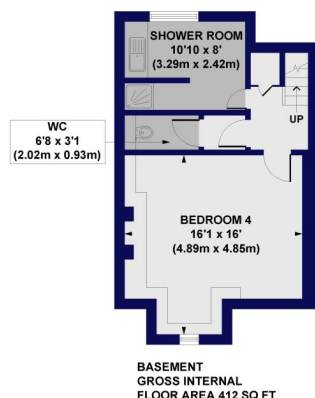
**Winkworth**





# Laura Terrace, N4

Approx. Gross Internal Floor Area 1725 sq. ft / 160.30 sq. m



All measurements of walls, doors, windows, fittings and appliances, including their size and location, are shown as standard sizes and do not constitute any warranty or representation by the seller, their agent or CP Creative. Any intending purchaser must satisfy himself by inspection or otherwise as to the correctness of the information contained in these plans. This plan is for illustrative purposes only and should be used as such by any prospective purchasers.

**Winkworth**

This floorplan is for illustration purposes only and is not to scale. The position and size of doors, windows, appliances and other features are approximate.

Highbury | 0207 989 7000 | highbury@winkworth.co.uk

**Winkworth**

*winkworth.co.uk*

See things differently

Winkworth wishes to inform prospective buyers and tenants that these particulars are a guide and act as information only. All our details are given in good faith and believed to be correct at the time of printing but they don't form part of an offer or contract. No Winkworth employee has authority to make or give any representation or warranty in relation to this property. All fixtures and fittings, whether fitted or not are deemed removable by the vendor unless stated otherwise and room sizes are measured between internal wall surfaces, including furnishings.