



KINLOCH DRIVE, LONDON, NW9
£575,00 FREEHOLD

THREE BEDROOM SEMI DETACHED BUNGALOW - WELSH HARP VILLAGE LOCATION

Kingsbury | 020 8204 0000 | kingsbury@winkworth.co.uk

Winkworth

winkworth.co.uk

See things differently

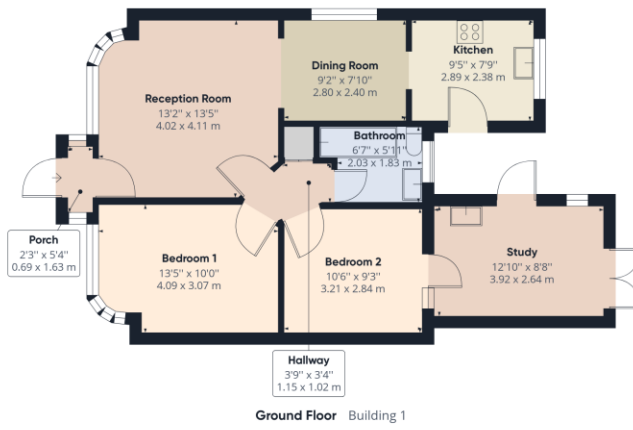


DESCRIPTION: A fondly loved and well maintained three bedroom semi-detached bungalow beautifully positioned within the peaceful and highly sought after Welsh Harp Village residence. On offer are two double bedrooms, a study which could also double up as a third bedroom, a basic family bathroom, a homely reception room, a dining area, a simplistic kitchen, and a stunning and charming rear garden with a raised patio area offering sweeping views of Silver Jubilee Park. Further benefits include a convenient garage for storage demands. The lovely outdoor spaces of the Welsh Harp and Fryent Country Park are easily reachable if you are an outdoor lover. Commuters can also take advantage of Hendon Thameslink (0.8 miles), Kingsbury Station (Jubilee Line) 1.2 miles, and Hendon Central Station (Northern Line) 1.4 miles. Fryent Primary, Oliver Goldsmith, and Kingsbury High just to name a few reputable schools within close proximity, and a diverse range of places of worship are available including Shree Swaminarayan Mandir Temple. An internal viewing is advised.

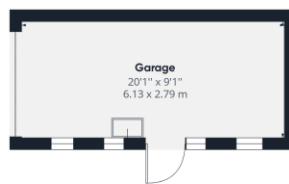




Winkworth



Approximate total area⁽¹⁾
 935.11 ft²
 86.87 m²

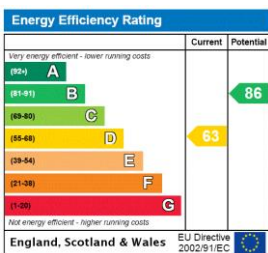


(1) Excluding balconies and terraces

While every attempt has been made to ensure accuracy, all measurements are approximate, not to scale. This floor plan is for illustrative purposes only.

GIRAFFE360

This floorplan is for illustration purposes only and is not to scale. The position and size of doors, windows, appliances and other features are approximate.



Kingsbury | 020 8204 0000 | kingsbury@winkworth.co.uk

