



Sterne Street, W12

£1,675,000 Freehold

A fabulous, four bedroom, three bathroom, mid-terrace Victorian house in this enviable location.

Reception Room | Kitchen | Dining Room | 4 Bedrooms | Study Room | En Suite Shower Room | Bathroom | Shower Room | Cloakroom | Garden | 1989 Sq Ft / 185 Sq M | Council Tax Band F | EPC Rating Band D

Winkworth



LOCATION

Sterne Street is hidden away, just moments from Shepherd's Bush Green, Westfield London shopping centre, White City House, an abundance of independent shops, restaurants and an internationally famous music venue, as well as outstanding transport links. A number of well regarded schools in both state and private sectors are also close by. Shepherds Bush station is within easy reach, offering both Central Line and London Overground services.

DESCRIPTION

This wider than average house offers well proportioned accommodation arranged over three floors and is extremely well presented throughout, blending classic and contemporary styles. The ground floor offers entrance hall, cloakroom, dining room, kitchen and reception room spanning the back of the house which opens to a walled south west facing garden. The first floor offers the main bedroom suite, further double bedroom and shower room, whilst the top floor offers two bedrooms and bathroom.

An absolute must see!





LOCAL AUTHORITY
Hammersmith & Fulham

TENURE
Freehold.

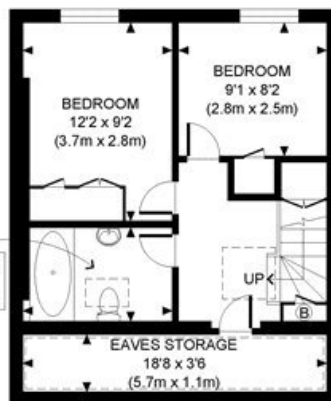
PRICE: £1,675,000 Freehold



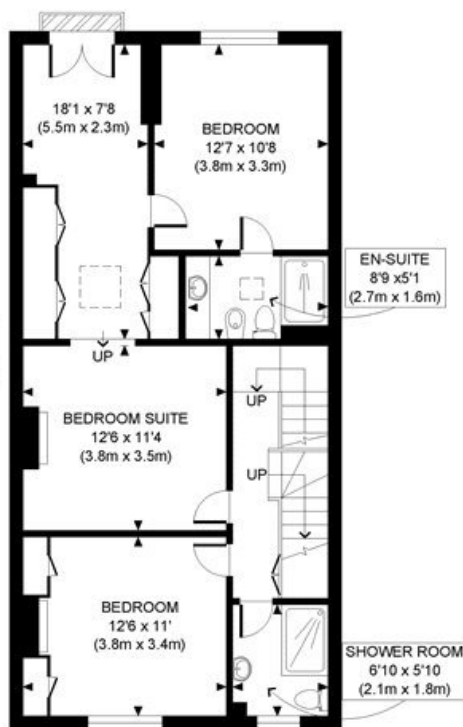
Score	Energy rating	Current	Potential
92+	A		
81-91	B		83 B
69-80	C		
55-68	D	67 D	
39-54	E		
21-38	F		
1-20	G		



BATHROOM
9'2 x 5'9
(2.8m x 1.8m)



WC
4'4 x 2'8
(1.3m x 0.8m)



APPROX. GROSS INTERNAL FLOOR AREA WITH EAVES STORAGE: 1989 SQ FT/ 185 SQM
APPROX. GROSS INTERNAL FLOOR AREA WITHOUT EAVES STORAGE: 1916 SQ FT/ 178 SQM

Winkworth

STERNE STREET, W12

This plan is for illustrative purposes only and should be used as such by any prospective client. Whilst every attempt has been made to ensure the accuracy of the Floor Plan contained here, measurements of the doors, windows, rooms and any other items are approximate and no responsibility is taken for any errors, omissions, or misstatement. The services, systems and appliances shown have not been tested and no guarantee as to the operability or efficiency can be given.

PROPERTY PHOTO PLANS
We sell and let property through

The displayed square footage is taken from the floor plans with measurements created using the Royal Institute of Chartered Surveyors' Code of Practice for Measuring. These measurements are approximate and included for illustrative purposes only. Winkworth does not make any representation as to the accuracy of these measurements and you should seek to verify them for yourself. Winkworth accept no liability for any loss you may suffer if you rely on these measurements.

Shepherds Bush | 020 8735 3266 | shepherdsbush@winkworth.co.uk

Winkworth

for every step...

Under the Property Misdescriptions Act 1991, these Particulars are a guide and act as information only. All details are given in good faith and are believed to be correct at time of printing. Winkworth give no representation as to their accuracy and potential purchasers or tenants must satisfy themselves by inspection or otherwise as to their correctness. No employee of Winkworth has authority to make or give any representation or warranty in relation to this property.