



SALTERFORD ROAD, SW17
£500,000 LEASEHOLD

A SUPERB, TWO BEDROOM GROUND FLOOR MAISONETTE WITH A PRIVATE GARDEN

Tooting | 020 8767 5221 | tooting@winkworth.co.uk



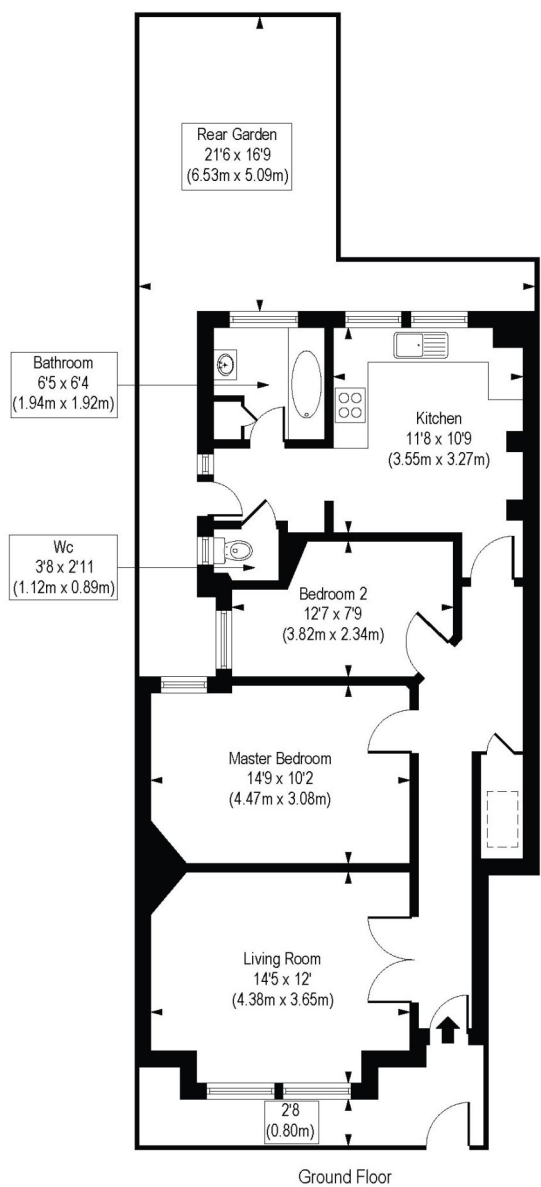
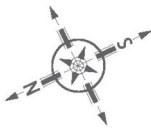
DESCRIPTION:

A superb, two-bedroom ground floor maisonette situated in the sought after area of Furzedown and within walking distance to Tooting Broadway underground station. The property comprises, two bedrooms, front reception room, family bathroom, large kitchen with space for a dining table and a large private garden to the rear. Offered with no onward chain.

Located within walking distance of Tooting Broadway and its many transport links, bars, restaurants, and shops but also Furzedown and its fantastic local schools.



Salterford Road, SW17
Approx. Gross Internal Floor Area 765 sq. ft / 71.09 sq. m



COMPLIANT WITH RICS CODE OF MEASURING PRACTICE. Floorplan is for illustrative purposes only and is not to scale. Every attempt has been made to ensure the accuracy of the floorplan shown, however all measurements, fixtures, fittings and data shown are an approximate interpretation for illustrative purposes only. Liability for errors, omissions or mis-statement through negligence or otherwise is hereby excluded.

This floorplan is for illustration purposes only and is not to scale. The position and size of doors, windows, appliances and other features are approximate.

