



Alum Chine Road, Dorset, BH4

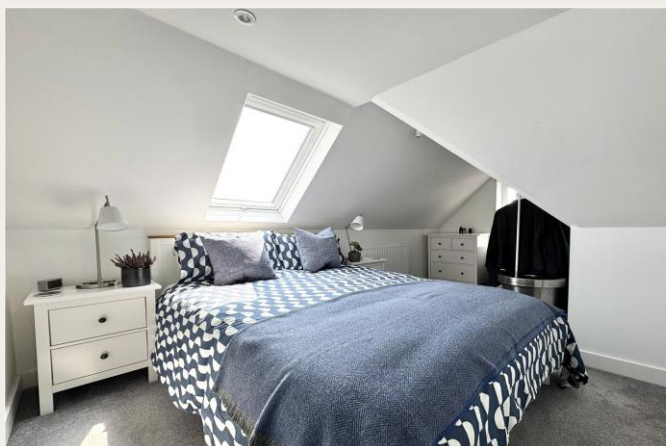
£260,000 *Share of Freehold*



An incredibly bright, converted top floor split-level apartment conveniently situated just a short (0.3 mile) level walk from the excellent range of shops, bars, restaurants and coffee shops in Westbourne Village. The property has the added benefit of no forward chain.

KEY FEATURES

- Two double bedrooms
- Study/snug area
- Top (2nd) floor
- Incredibly bright
- Contemporary kitchen with integrated appliances
- Luxury shower room
- En-suite's to both bedrooms



Westbourne

01202 767633 | westbourne@winkworth.co.uk



DESCRIPTION

The apartment is accessed through the well maintained communal entrance hallways where stairs lead to the first floor landing where the apartment can be found.

A doorway on the first floor leads into the entrance hallway with an understairs storage cupboard where a turn back staircase leads to the spacious top floor landing. As soon as you enter this property, you realise how incredibly bright this apartment is with a skylight flooding the hallway with light.

The lounge is a double aspect room enjoying a pleasant aspect and having space for a sofa suite and chairs as required. From the lounge, an archway leads through to the kitchen which is fitted with an extensive range of contemporary high-gloss cupboard and drawer units with adjoining work surface areas and a range of integrated

appliances and has a large 'Velux' style opening window.

The master bedroom is another double aspect room and will accommodate a double bed and bedroom furniture or wardrobes as required. There is an en-suite shower room to the master comprising a corner shower, a low-level WC and an inset wash hand basin with a vanity unit beneath. The second bedroom is another bright double room with a 'Velux' style window also benefiting from its own en suite bathroom. There is also a study area open plan to the landing which would make an ideal home office or a snug area. The apartment also benefits from a separate WC located off the hallway.

Outside there is an allocated parking space conveyed with this apartment.





LOCATION

Westbourne and Bournemouth, nestled along Dorset's stunning south coast, blend seaside charm with vibrant culture. Westbourne, a stylish Victorian suburb, offers boutique shopping, cozy cafés, and a village feel just a short walk from the sea. It's known for its elegant architecture, peaceful gardens, and independent eateries. Nearby Bournemouth is a lively resort town boasting award-winning sandy beaches, a bustling pier, and scenic coastal walks. The town offers a dynamic mix of entertainment, arts, and nightlife, while also featuring tranquil parks and historic landmarks. Together, Westbourne and Bournemouth provide a unique blend of relaxation, sophistication, and seaside fun.

The Bournemouth Wessex Way is very close and gives direct access to the M27 motorway with London a circa 2 hour commute. There are also main line train routes from either Poole or Bournemouth railway stations which connect the Weymouth to London Waterloo South West train service.

The vast majority of Bournemouth & Poole enjoy access to 5G network coverage and ultra-fast internet, however we recommend you check each

For more information, scan the QR code or visit the link below



<https://www.winkworth.co.uk/sale/property/WBN250010>

Where no figures are shown, we have been unable to ascertain the information. All figures that are shown were correct at the time of printing.

MATERIAL INFO

Tenure: Share of Freehold

Term: 992 year and 6 months

Service Charge: £0 per annum

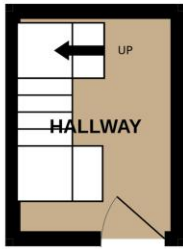
Ground Rent: £ 0 Annually (subject to increase)

Council Tax Band: C

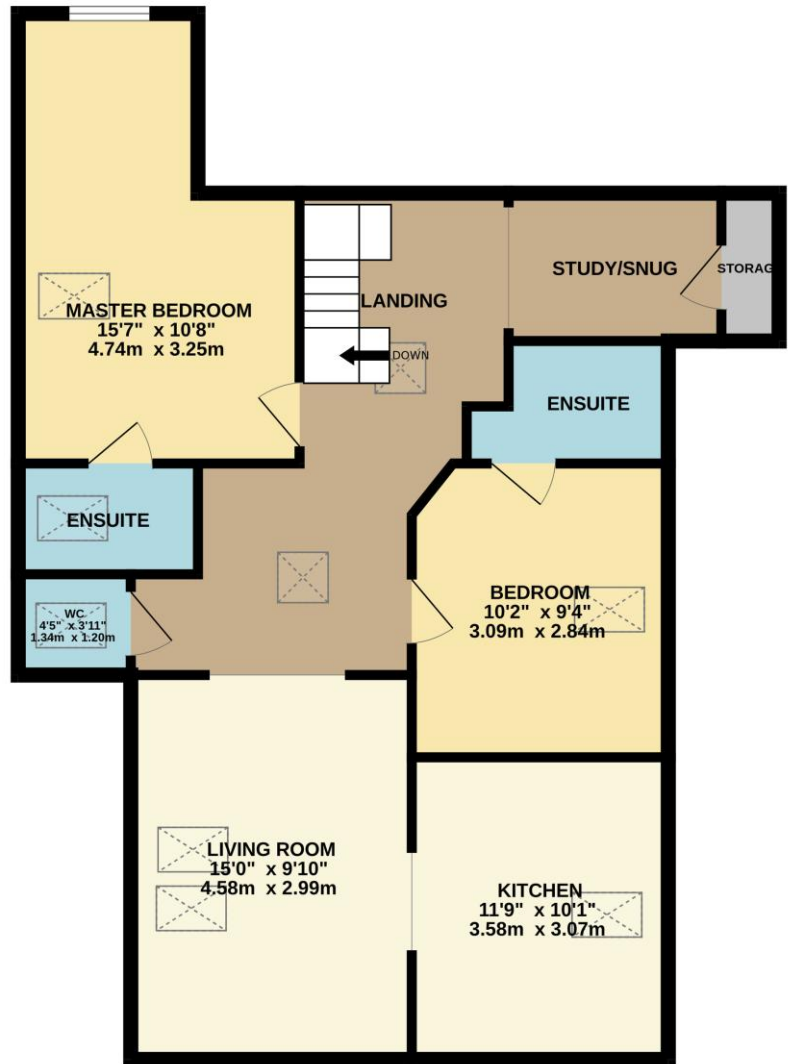
EPC rating: C

Score	Energy rating	Current	Potential
92+	A		
81-91	B		
69-80	C	80 C	80 C
55-68	D		
39-54	E		
21-38	F		
1-20	G		

GROUND FLOOR
57 sq.ft. (5.3 sq.m.) approx.



1ST FLOOR
868 sq.ft. (80.6 sq.m.) approx.



TOTAL FLOOR AREA : 926 sq.ft. (86.0 sq.m.) approx.

Whilst every attempt has been made to ensure the accuracy of the floorplan contained here, measurements of doors, windows, rooms and any other items are approximate and no responsibility is taken for any error, omission or mis-statement. This plan is for illustrative purposes only and should be used as such by any prospective purchaser. The services, systems and appliances shown have not been tested and no guarantee as to their operability or efficiency can be given.
Made with Metropix ©2025

Westbourne

01202 767633 | westbourne@winkworth.co.uk

Winkworth wishes to inform prospective buyers and tenants that these particulars are a guide and act as information only. All our details are given in good faith and believed to be correct at the time of printing but they don't form part of an offer or contract. No Winkworth employee has authority to make or give any representation or warranty in relation to this property. All fixtures and fittings, whether fitted or not are deemed removable by the vendor unless stated otherwise and room sizes are measured between internal wall surfaces, including furnishings.