



BICKERSTETH ROAD, SW17  
£750,000 LEASEHOLD

## AN EXCEPTIONALLY PRESENTED THREE DOUBLE BEDROOM PERIOD MAISONETTE.

Tooting | 020 8767 5221 | tooting@winkworth.co.uk 17 Upper Tooting Road,  
London, SW17 7TS

**Winkworth**

for every step...

[winkworth.co.uk](http://winkworth.co.uk)



## SUMMARY

An exceptionally presented three double bedroom period maisonette. Offering in excess of 1200sq ft and arranged over two floors. The property has been beautifully maintained and extended by the current owners, offering three double bedrooms and two bathrooms. A wonderful open plan shaker style kitchen/dining room with ample storage and integral appliances. A large separate reception room to the front of the property which benefits from a southwest facing aspect and offers an abundance of light as well as a beautiful period fireplace. To the rear of the property stairs lead down to a gorgeous private garden which has been well landscaped providing all year round use and ample space to entertain. This stunning flat further benefits from a private roof terrace.

Bickersteth Road is ideally positioned for access in and out of Central London, as well as providing easy access to both Tooting underground (Northern Line) and Tooting overground stations. The shopping, dining and entertainment facilities of Tooting high street is within a short distance including the famous Tooting Markets. There are three Ofsted rated 'OUTSTANDING' schools within striking distance of the property. The property's location further benefits from being within a short walk of Tooting Bec Common.





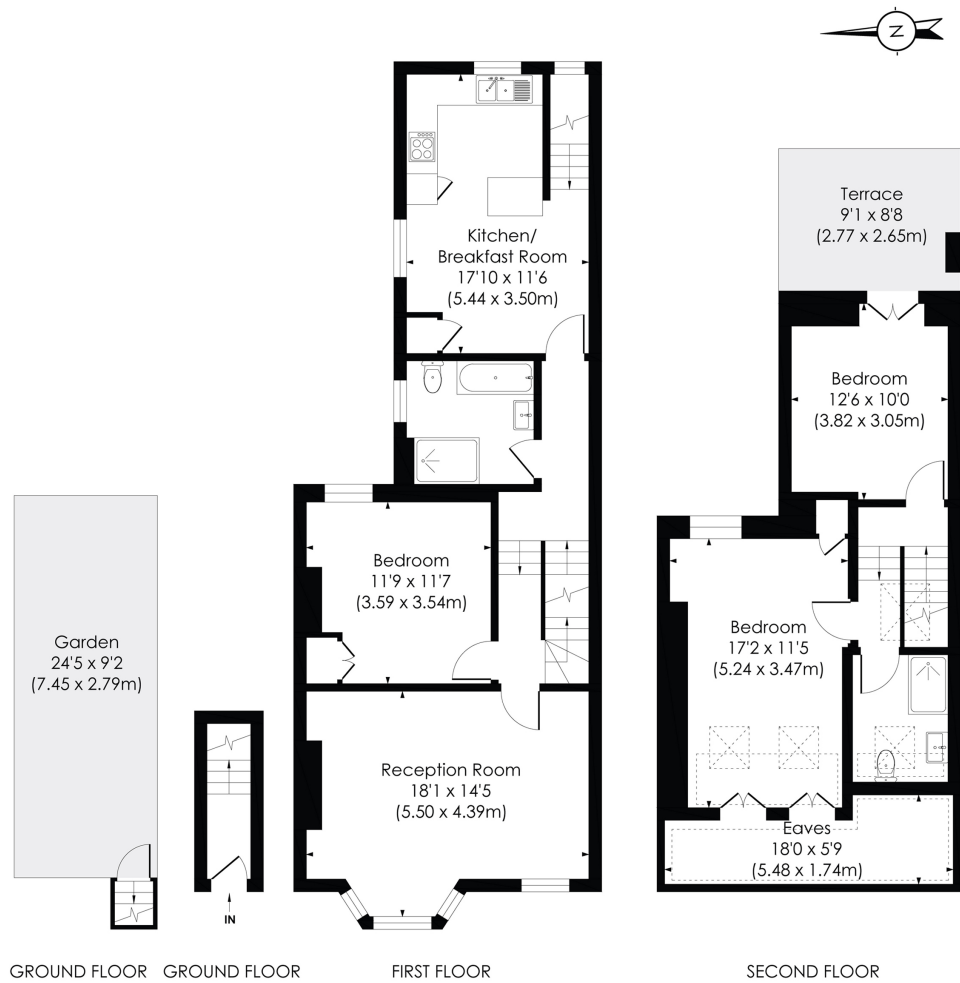


**BICKERSTETH ROAD, SW17**

Approx. Gross Internal Floor Area

**1291 Sq. ft/119.96 Sq. m**

Including eaves

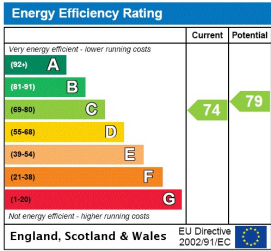


© Pixangle Property Marketing Ltd. info@pixangle.com Tel: 0208 870 2118

pixangle  
PROPERTY MARKETING

This floor plan has been prepared for the purpose of illustration only in accordance with the latest RICS code of measuring practice and is not to scale. All measurements and areas are approximate and whilst every effort has been made to ensure the accuracy of the plan contained here, no responsibility is taken for any error, omission or misstatement.

This floorplan is for illustration purposes only and is not to scale. The position and size of doors, windows, appliances and other features are approximate.



Tooting | 020 8767 5221 | tooting@winkworth.co.uk  
17 Upper Tooting Road, London, SW17 7TS

**Winkworth**  
for every step...

winkworth.co.uk

Winkworth wishes to inform prospective buyers and tenants that these particulars are a guide and act as information only. All our details are given in good faith and believed to be correct at the time of printing but they don't form part of an offer or contract. No Winkworth employee has authority to make or give any representation or warranty in relation to this property. All fixtures and fittings, whether fitted or not are deemed removable by the vendor unless stated otherwise and room sizes are measured between internal wall surfaces, including furnishings.