



LANCASTER ROAD, LONDON, W11
£2,426.67 PER MONTH FURNISHED

Winkworth



LANCASTER ROAD, LONDON, W11

A fabulously located two double bedroom flat, situated on the lower ground floor of a charming period building. in the heart of Ladbroke Grove .

The property benefits from its own entrance and offers a large open plan reception room, contemporary styled kitchen, two double bedrooms with in plenty of built storage, a modern bathroom and contemporary styled kitchen.

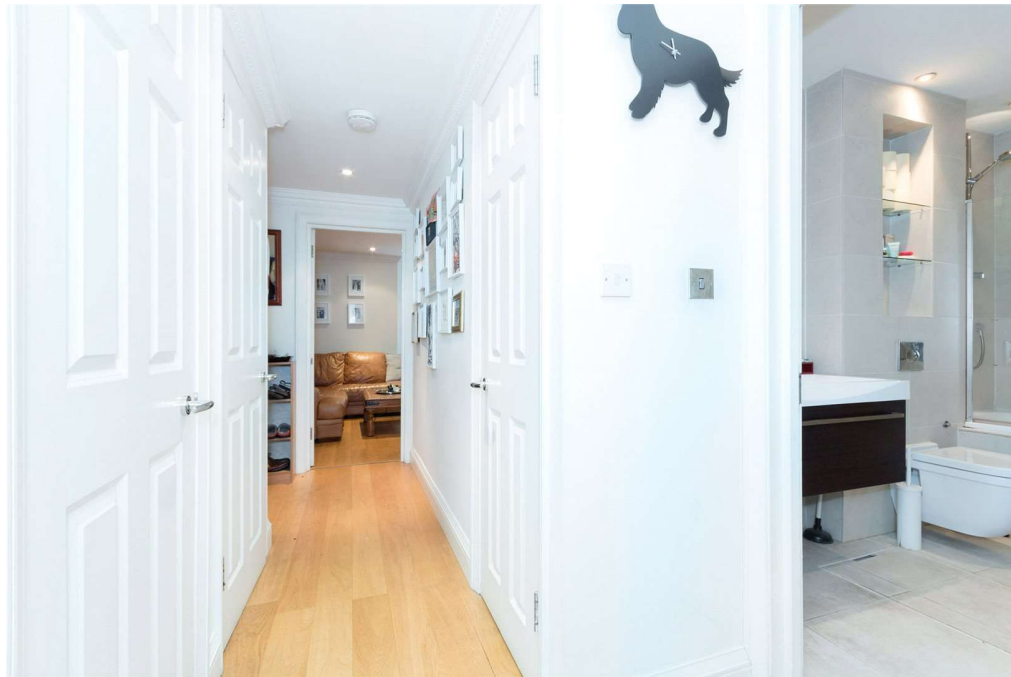
A fabulously located two double bedroom flat, situated on the lower ground floor of a charming period building.

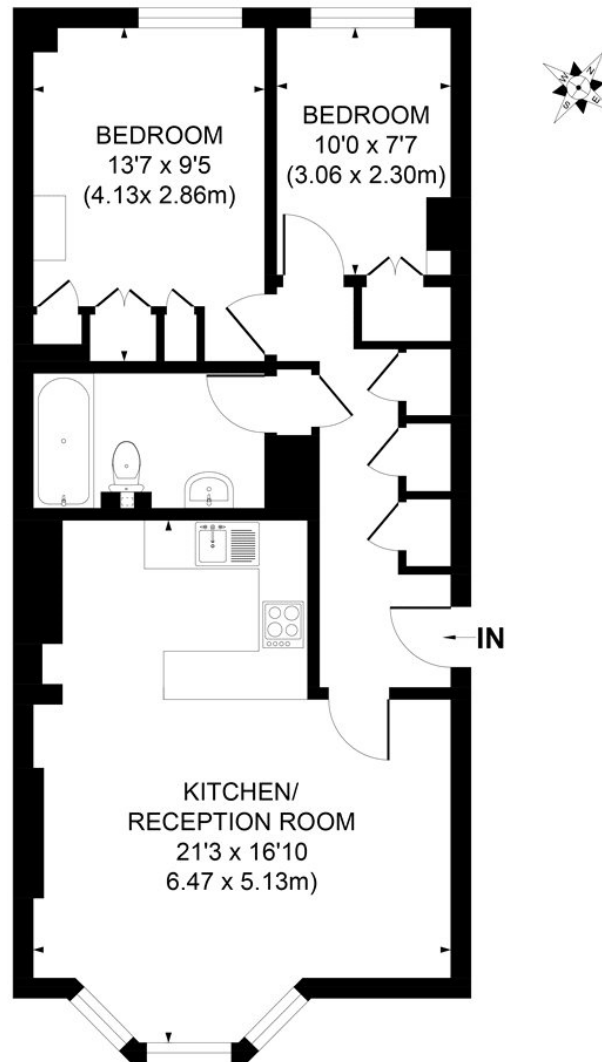
The property benefits from its own entrance and offers a large open plan reception room, contemporary styled kitchen, two double bedrooms with in plenty of built storage and a modern bathroom.

LOCATION

Kensington and Chelsea's hotspot, Ladbroke Grove is a prime example of a modern urban living offering plenty of unique restaurants, coffee shops and antique furniture stores. Renowned Portobello market and transport links at Ladbroke Grove are a stone throw away.







LOWER GROUND FLOOR

APPROX. GROSS INTERNAL FLOOR AREA 671 SQ. FT / 62.38 SQ. M

Illustration for identification purpose only, not to scale
All measurements are maximum, and includes wardrobes and window bays where applicable
Prepared by Pixangle ©. Tel 020 8870 2118

Energy Efficiency Rating		
	Current	Potential
Very energy efficient - lower running costs		
(92-100) A		
(81-91) B		
(69-80) C	81	83
(55-68) D		
(39-54) E		
(21-38) F		
(1-20) G		
Not energy efficient - higher running costs		
England, Scotland & Wales		EU Directive 2002/91/EC

North Kensington | 020 7792 5000 | northkensington@winkworth.co.uk

winkworth.co.uk

Winkworth wishes to inform prospective buyers and tenants that these particulars are a guide and act as information only. All our details are given in good faith and believed to be correct at the time of printing but they don't form part of an offer or contract. No Winkworth employee has authority to make or give any representation or warranty in relation to this property. All fixtures and fittings, whether fitted or not are deemed removable by the vendor unless stated otherwise and room sizes are measured between internal wall surfaces, including furnishings.

Winkworth