



Imperial Court, St John's Wood, London, NW8

£3,200,000 *Leasehold*

5  1  3 

A spacious four/five-bedroom apartment, with four bathrooms directly opposite Regent's Park. The property benefits from a 25ft dual-aspect reception room, which leads on to a private terrace, facing the park. Located on the first-floor of this secure, portered development with a residents' gym and underground parking. This superb location gives easy access to both Regent's Park (100 metres away) and Primrose Hill (0.5 miles away) as well as the recently landscaped St John's Wood High Street and Underground Station (Jubilee Line) 0.7 miles away.



Winkworth St John's Wood

020 7586 7001 | stjohnswood@winkworth.co.uk

Winkworth

for every step...



KEY FEATURES

- Principle Bedroom with En-suite
- Four Further Bedrooms
- Two Bathrooms
- Reception Room with Private Balcony
- Dining Room with Private Balcony
- Separate Kitchen
- Laundry
- Passenger Lift
- Porterage
- Residents Gym
- Underground Parking



MATERIAL INFO

Tenure: Leasehold

Term: 950 year and 3 months

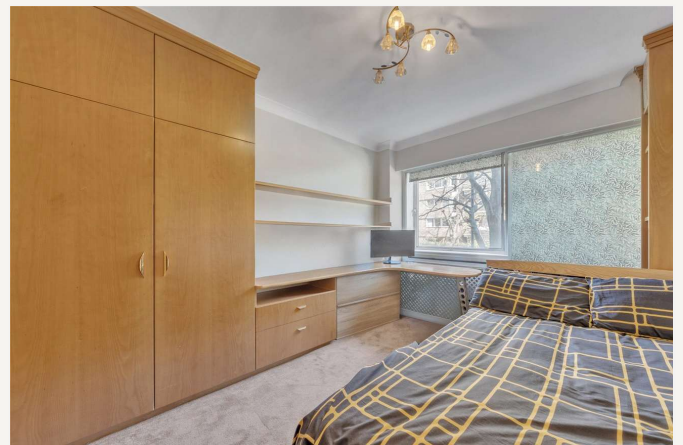
Service Charge: £54,875.96 per annum

Ground Rent: £1 Annually (subject to increase)

Council Tax Band: H

EPC rating: D





Score	Energy rating	Current	Potential
92+	A		
81-91	B		
69-80	C		
55-68	D	66 D	66 D
39-54	E		
21-38	F		
1-20	G		

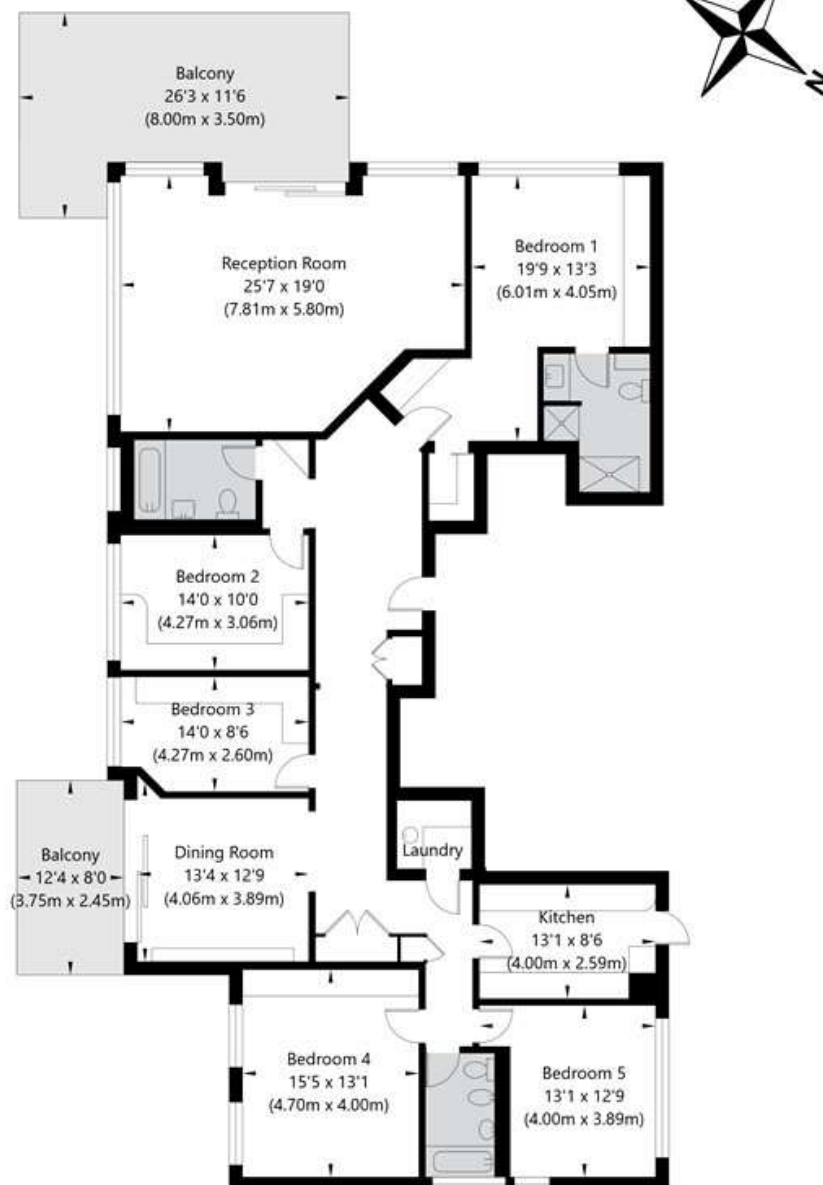
For more information, scan the QR code or visit the link below



<https://www.winkworth.co.uk/sale/property/SJD250064>

Imperial Court London NW8 7PT

First Floor
GROSS INTERNAL FLOOR AREA
APPROX. 208.62 SQ M / 2246 SQ FT



APPROXIMATE GROSS INTERNAL FLOOR AREA 208.62 SQ M / 2246 SQ FT
THIS FLOOR PLAN IS FOR ILLUSTRATIVE PURPOSES ONLY AND
SHOULD BE USED FOR THIS PURPOSE BY PROSPECTIVE APPLICANTS AS ITS NOT TO SCALE.

(c) AMBERSHORE PIX LIMITED / PHOTO - VIDEO - FLOOR PLANS / 0800 999 1577 / WWW.AMBERSHOREPIX.CO.UK

Where no figures are shown, we have been unable to ascertain the information. All figures that are shown were correct at the time of printing.

Winkworth St John's Wood

020 7586 7001 | stjohnswood@winkworth.co.uk

Winkworth

for every step...

Winkworth wishes to inform prospective buyers and tenants that these particulars are a guide and act as information only. All our details are given in good faith and believed to be correct at the time of printing but they don't form part of an offer or contract. No Winkworth employee has authority to make or give any representation or warranty in relation to this property. All fixtures and fittings, whether fitted or not are deemed removable by the vendor unless stated otherwise and room sizes are measured between internal wall surfaces, including furnishings.