



HALDON ROAD, LONDON, SW18
£1,950 PER MONTH

SUMMARY:

A two-bedroom flat on Haldon Road, SW18. The property briefly comprises an entrance hall, reception room, separate kitchen, two double bedrooms, and bathroom. There is plenty of built-in storage throughout.

Putney | 020 8877 1000 | putney@winkworth.co.uk

Winkworth

for every step...

winkworth.co.uk





ACCOMMODATION

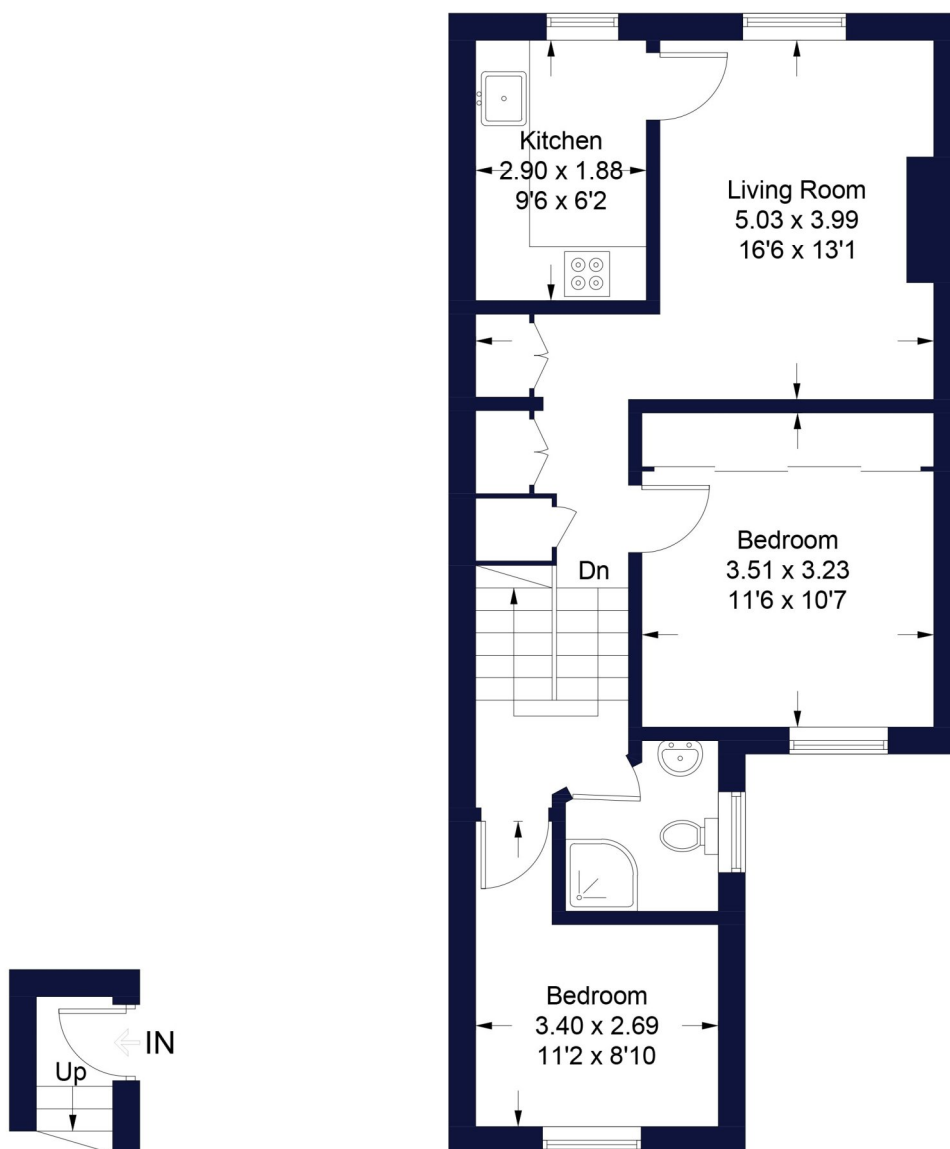
Long Let, 2 Bedrooms, 1 Reception Room, 1 Bathroom, Flat/Apartment, Upper Floor without Lift, Period, Town/City, Approx. 565 sq. ft.



Haldon Road

Winkworth

Approximate Gross Internal Area Total = 52.5 sq m / 565 sq ft



First Floor
Sq m 1.5 / Sq ft 16

Second Floor
Sq m 51 / Sq ft 549

Illustration for identification purposes only, measurements are approximate, not to scale. FloorplansUsketch.com © 2021 (ID798492)

This floorplan is for illustration purposes only and is not to scale. The position and size of doors, windows, appliances and other features are approximate.

Deposit: 5 weeks' rent

Holding Deposit: 1 week's rent

Council Tax Band: Wandsworth

Where no figures are shown, we have been unable to ascertain the information. All figures that are shown were correct at the time of printing.

Putney | 020 8877 1000 | putney@winkworth.co.uk

Winkworth

for every step...

winkworth.co.uk

Winkworth wishes to inform prospective buyers and tenants that these particulars are a guide and act as information only. All our details are given in good faith and believed to be correct at the time of printing but they don't form part of an offer or contract. No Winkworth employee has authority to make or give any representation or warranty in relation to this property. All fixtures and fittings, whether fitted or not are deemed removable by the vendor unless stated otherwise and room sizes are measured between internal wall surfaces, including furnishings.