



GREYSWOOD STREET, SW16
£875,000 FREEHOLD

**A SUPERB FAMILY HOME SITUATED WITHIN THE
SOUGHT AFTER AREA OF FURZEDOWN**

Tooting | 020 8767 5221 | tooting@winkworth.co.uk

Winkworth

for every step...

winkworth.co.uk



DESCRIPTION

A superb family home situated within the sought after area of Furzedown. The current accommodation comprises, large living room with fireplace, dining room and a large shaker style kitchen/breakfast room with views over the garden. The first floor benefits from two superb double bedrooms and a good size bedroom/study to the rear. A large master bedroom is on the second floor boasting ample storage along with an en-suite shower room. To the rear, the garden has been beautifully landscaped offering mature beds around the borders and a large paved entertaining space. Being end of terrace, the property also has side access from the street with a large storage area which stems the depth of the property.

Greyswood Street is situated within the highly acclaimed Furzedown location. A wide range of local amenities can be found within easy reach on Moyser Road and Tooting High Road. Transport links are found a short walk away at Tooting Bec Underground (Northern Line), Streatham Common (providing access to London Bridge, Victoria and Clapham Junction), and Streatham Overground Station (providing Thames Link services). Welham Road has the added benefit of being within walking distance of excellent primary and secondary schools.

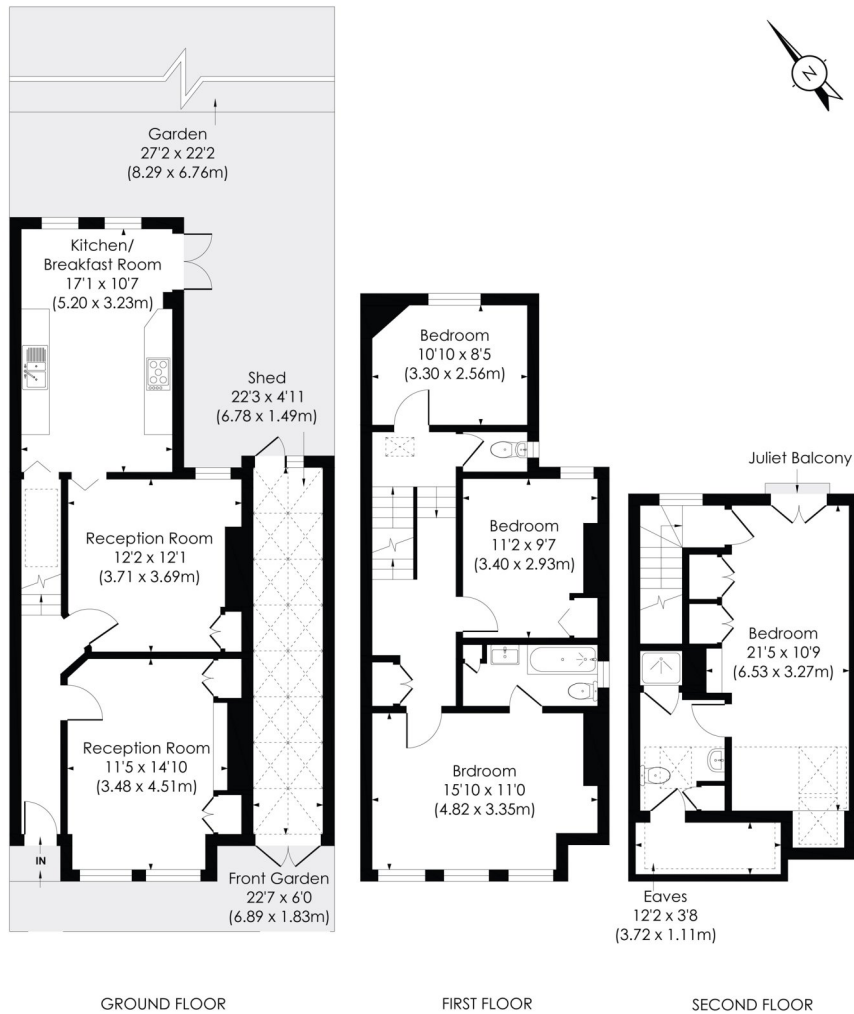


GREYSWOOD STREET, SW16

Approx. Gross Internal Floor Area

1660 Sq. ft/154.26 Sq. m

Including eaves and shed



© Pixangle Property Marketing Ltd. info@pixangle.com Tel: 0208 870 2118

pixangle
PROPERTY MARKETING

This floor plan has been prepared for the purpose of illustration only in accordance with the latest RICS code of measuring practice and is not to scale. All measurements and areas are approximate and whilst every effort has been made to ensure the accuracy of the plan contained here, no responsibility is taken for any error, omission or misstatement.

This floorplan is for illustration purposes only and is not to scale. The position and size of doors, windows, appliances and other features are approximate.

Tooting | 020 8767 5221 | tooting@winkworth.co.uk

Winkworth

for every step...

winkworth.co.uk

Winkworth wishes to inform prospective buyers and tenants that these particulars are a guide and act as information only. All our details are given in good faith and believed to be correct at the time of printing but they don't form part of an offer or contract. No Winkworth employee has authority to make or give any representation or warranty in relation to this property. All fixtures and fittings, whether fitted or not are deemed removable by the vendor unless stated otherwise and room sizes are measured between internal wall surfaces, including furnishings.