



**CHAIN FREE FAMILY HOME WITH PLENTY OF POTENTIAL
GUIDE PRICE £375,000 FREEHOLD**

Winkworth

189 CASTLE ROAD Salisbury SP1 3RX

***** CHAIN FREE ***** 189 Castle Road is a spacious and light filled family home with well proportioned accommodation. Set over three floors, this semi detached four bedroom house spans 1248 sq ft and comes with off street car parking. Whilst the house requires some modernisation, it offers all buyers the chance to put their own stamp on the property and really make it their own.

AT A GLANCE

Ground Floor:
Entrance Hall
Dining Room
Drawing Room
Kitchen
Downstairs Loo

First Floor:
Two Double Bedrooms
Bathroom
Single Bedroom

Second Floor:
Double Bedroom
Loft Access

Outside:
East Facing Garden
Off Street Parking for three cars
Front Garden

Mains gas, electricity and water
EPC Band E

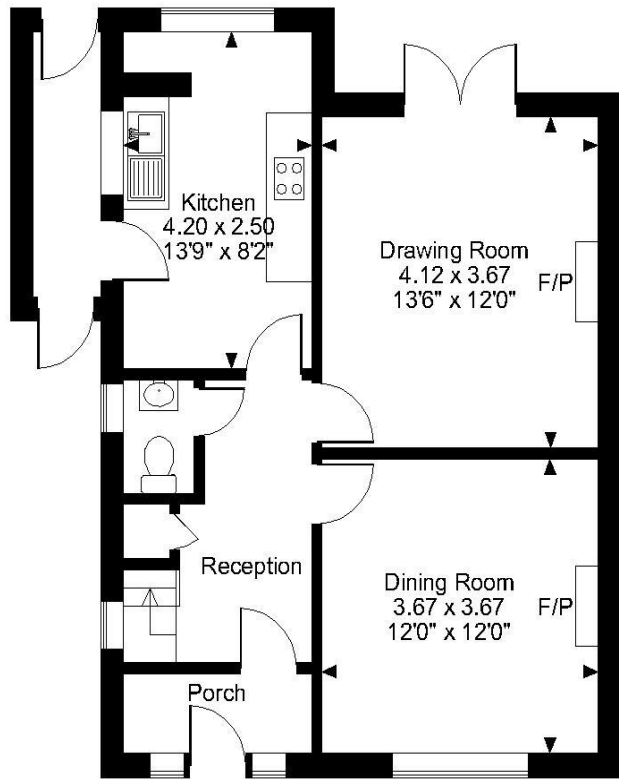
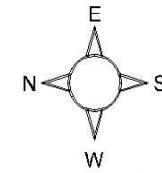


LOCATION

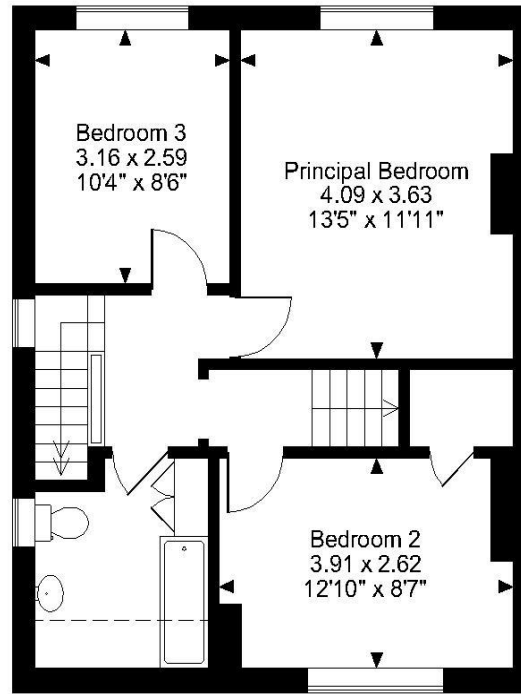
Castle Road is situated on the northern side of Salisbury, located just a short walk from both the city centre and the historic Old Sarum. Salisbury boasts a well-thought of Playhouse and twice-weekly charter market, with a plethora of restaurants, shopping, and leisure facilities. There is a number of primary and secondary schools, both private and state, including boys and girls grammar schools. Salisbury has excellent road links to London and the West Country (A303), Southampton (A36) and Bournemouth (A338), and provides direct trains to London Waterloo (90 mins), Bristol (80 mins) and Bath (60 mins) from Salisbury mainline railway station.



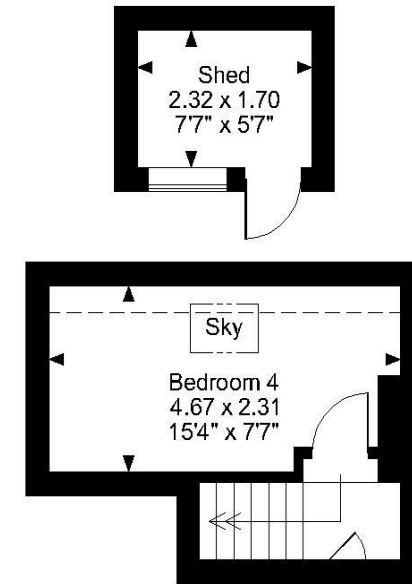
Castle Road, Salisbury
Approximate Gross Internal Area
Main House = 1248 Sq Ft/116 Sq M
Shed = 42 Sq Ft/4 Sq M
Total = 1290 Sq Ft/120 Sq M



Ground Floor



First Floor



Second Floor

Loft

FOR ILLUSTRATIVE PURPOSES ONLY - NOT TO SCALE

The position & size of doors, windows, appliances and other features are approximate only.

□□□□ Denotes restricted head height

Salisbury | 01722 44300 | salisbury@winkworth.co.uk

winkworth.co.uk

Winkworth wishes to inform prospective buyers and tenants that these particulars are a guide and act as information only. All our details are given in good faith and believed to be correct at the time of printing but they don't form part of an offer or contract. No Winkworth employee has authority to make or give any representation or warranty in relation to this property. All fixtures and fittings, whether fitted or not are deemed removable by the vendor unless stated otherwise and room sizes are measured between internal wall surfaces, including furnishings.

