



Flagstaff Road, Reading, Berkshire, RG2 6BX

£1,475 per month *Unfurnished*



Brand new one bedroom third floor apartment located within the Bankside Gardens development at Green Park Village. The property comprises open plan living room/kitchen, private balcony, double bedroom with built in wardrobe and a three piece bathroom. Undercroft allocated parking space included. Available now. Unfurnished.

*The property will have window fittings and a washing machine added before the commencement of a new tenancy.

The development benefits from Green Park train station linking Reading with Basingstoke and London. Located just minutes from central Reading and providing easy access to the M4 at junction 11. The apartment building also has use of The Community Hub which includes concierge, gym, co-working space and cinema room (included within the rental price).

KEY FEATURES

- Brand new one bedroom apartment
- Third floor (with lift access)
- Private balcony
- Access to the residents community hub
- Council tax band C
- Allocated parking space
- Available now



Reading

0118 4022 300 | reading@winkworth.co.uk

Winkworth

for every step...





MATERIAL INFO

Deposit: £1,701.92
Holding Deposit: £340.38
Council Tax Band: C
EPC rating: B

Approximate total area⁽¹⁾

43.1 m²
464 ft²

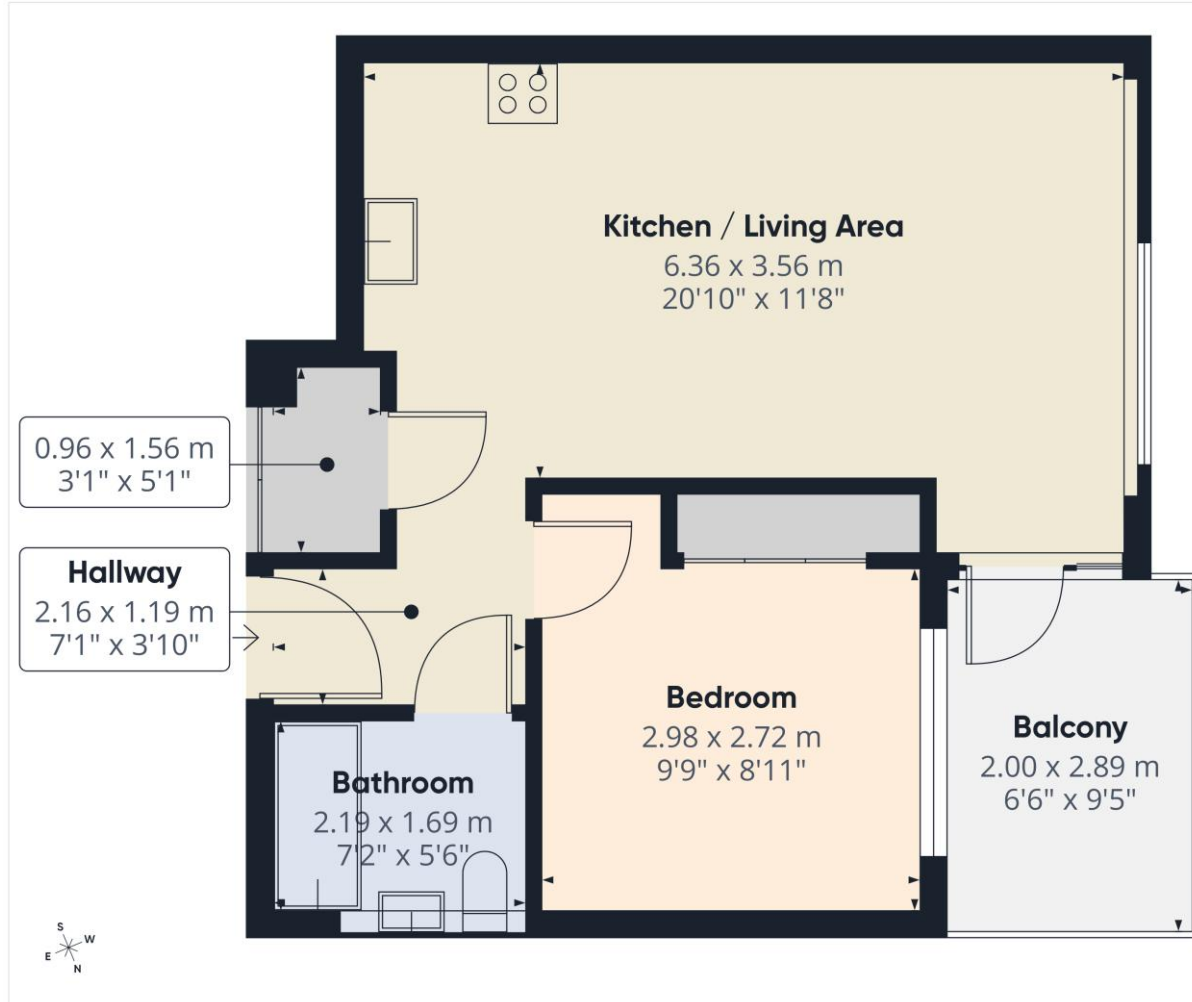
Balconies and terraces

5.8 m²
62 ft²

(1) Excluding balconies and terraces

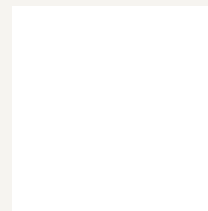
Calculations reference the RICS IPMS 3C standard. Measurements are approximate and not to scale. This floor plan is intended for illustration only.

GIRAFFE360



Score	Energy rating	Current	Potential
92+	A		
81-91	B	83 B	83 B
69-80	C		
55-68	D		
39-54	E		
21-38	F		
1-20	G		

For more information, scan the QR code or visit the link below


<https://www.winkworth.co.uk/rent/property/REA251098>

Where no figures are shown, we have been unable to ascertain the information. All figures that are shown were correct at the time of printing.

Reading

0118 4022 300 | reading@winkworth.co.uk

Winkworth

for every step...

Winkworth wishes to inform prospective buyers and tenants that these particulars are a guide and act as information only. All our details are given in good faith and believed to be correct at the time of printing but they don't form part of an offer or contract. No Winkworth employee has authority to make or give any representation or warranty in relation to this property. All fixtures and fittings, whether fitted or not are deemed removable by the vendor unless stated otherwise and room sizes are measured between internal wall surfaces, including furnishings.