

St Georges Court, London, SW3
£920.00 Per Week

2  1  2 



Winkworth Knightsbridge & Chelsea
020 7589 6616 | knightsbridge@winkworth.co.uk

Winkworth

for every step...

A bright and extensively refurbished two double bedroom two bathroom flat situated on the fourth floor (with lift) of this portered purpose-built building on Brompton Road moments from South Kensington tube station.

ABOUT THIS FLAT

The property has been tastefully interior designed to a high standard, combining modern finishes with well-balanced proportions. At its heart is a spacious reception room, featuring wood flooring and large windows that flood the space with natural light, creating an inviting setting for both relaxing and entertaining. The contemporary kitchen is fully fitted with high-quality appliances and sleek cabinetry, offering

both practicality and style. The principal bedroom benefits from excellent storage and a smart en suite bathroom, while the second bedroom, a smaller double, is ideal for guests, children, or use as a study. A well-appointed guest shower room completes the accommodation, adding flexibility for modern living.

KEY FEATURES

- 2 bedrooms
- 1 reception room
- 2 bathrooms
- 660 Square Feet
- Upper floor with lift
- Porter









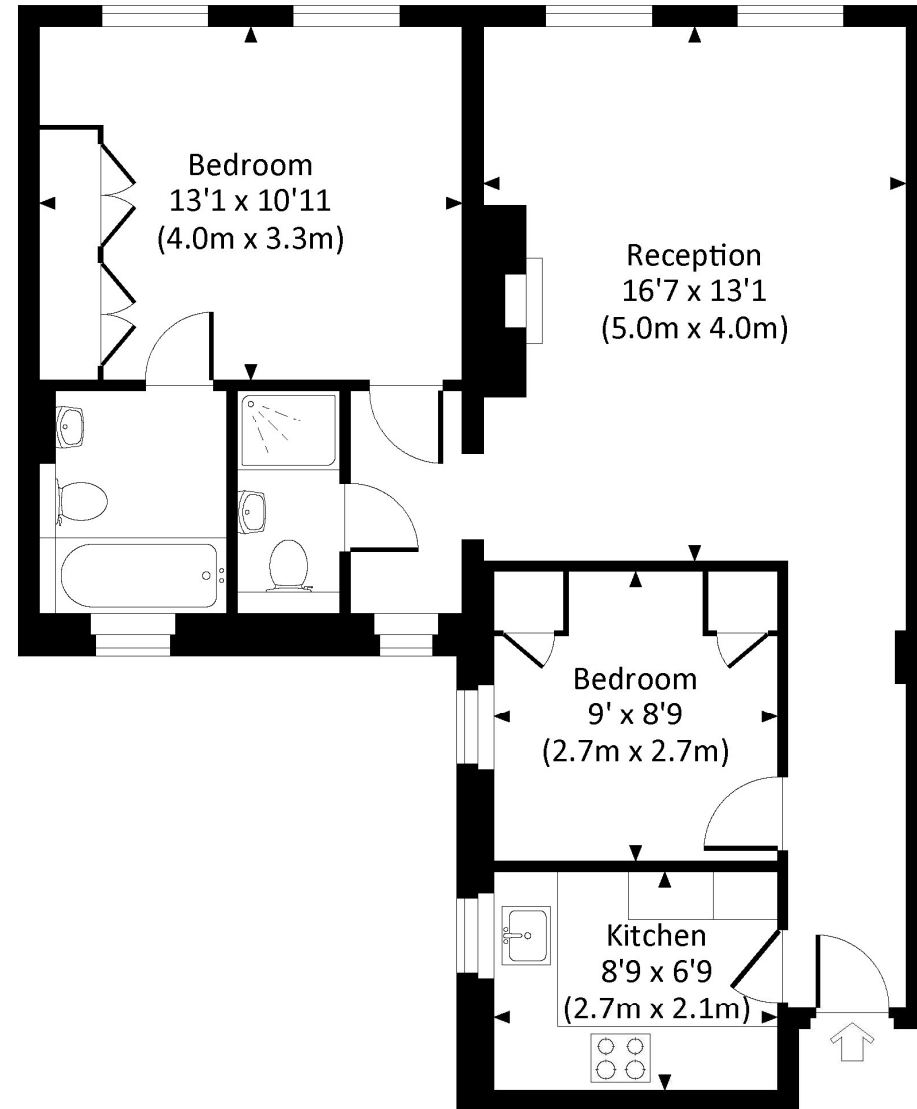
FINER DETAILS

- Holding Deposit: £920.00
- Deposit: £4,600.00
- EPC Rating: D
- Council Tax Band: G

Energy Efficiency Rating		
	Current	Potential
Very energy efficient - lower running costs		
(92+) A		
(81-91) B		
(69-80) C		
(55-68) D	66	67
(39-54) E		
(21-38) F		
(1-20) G		
Not energy efficient - higher running costs		
England, Scotland & Wales	EU Directive 2002/91/EC	

ST. GEORGES COURT, BROMPTON ROAD, SW3

Approx. gross internal area
660 Sq Ft. / 61.3 Sq M.



FOURTH FLOOR



All measurements have been made in accordance with RICS Code of Measuring Practice which are approximate only and only for illustrative purposes. For the avoidance of doubt, Dowling Jones Design shall not be liable for any reliance on these measurements. © 2019 www.dowlingjones.com 020 7610 9933