



HENRY HUDSON APARTMENTS, SE10 **£2,500 PER MONTH FURNISHED**

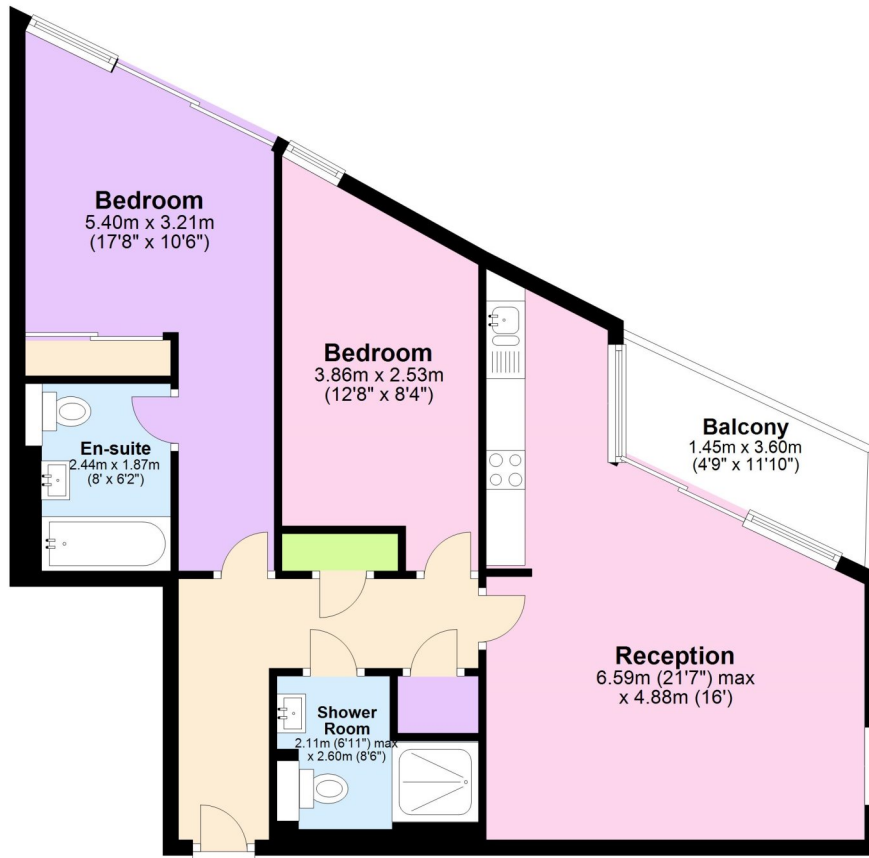
DESCRIPTION:

A stunning two bedroom, two bathroom apartment with secure parking found on the third floor of this modern Riverside development in Greenwich. Offered furnished and available from 22nd October 2025, your earliest viewing is recommended

Blackheath | 0208 8520999 | blackheath@winkworth.co.uk

Third Floor

Approx. 70.7 sq. metres (760.8 sq. feet)



Total area: approx. 70.7 sq. metres (760.8 sq. feet)

This floorplan is for illustration purposes only and is not to scale. The position and size of doors, windows, appliances and other features are approximate.

Energy Efficiency Rating		
	Current	Potential
Very energy efficient - lower running costs		
(92+) A		
(81-91) B	82	82
(69-80) C		
(55-68) D		
(39-54) E		
(21-38) F		
(1-20) G		
Not energy efficient - higher running costs		
England, Scotland & Wales	EU Directive 2002/91/EC	

Deposit: £2,884.62

Holding Deposit:

Council Tax Band:

Where no figures are shown, we have been unable to ascertain the information.
All figures that are shown were correct at the time of printing.