



OYSTER WHARF, READING, BERKSHIRE, RG1 3AE
£1,675 PER MONTH FURNISHED

**TWO BEDROOM TOWN CENTRE APARTMENT
WITH RIVER VIEWS. AVAILABLE 6TH APRIL.
FURNISHED.**

Reading | 0118 4022 300 | reading@winkworth.co.uk

Winkworth

for every step...

winkworth.co.uk



Winkworth

for every step...

DESCRIPTION:

Upper ground floor apartment in the heart of Reading town centre overlooking the Kennet and Avon Canal. This modern apartment offers a large open plan living/dining room and kitchen with integrated appliances, two double bedrooms with an en suite to the master bedroom and a three piece family bathroom. The property also benefits from two private balconies and under croft allocated parking space. Available 6th April 2024. Furnished.

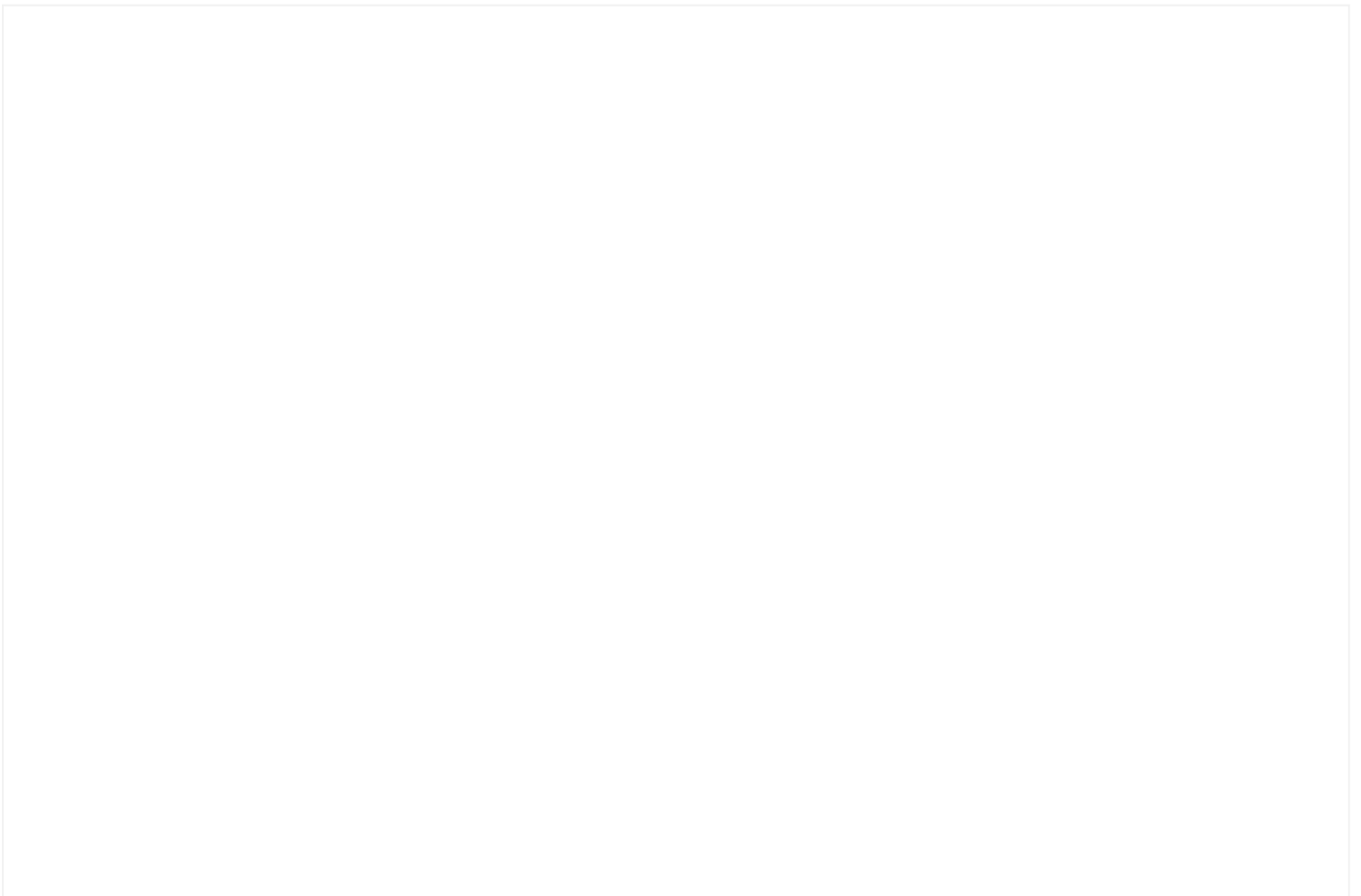
AT A GLANCE

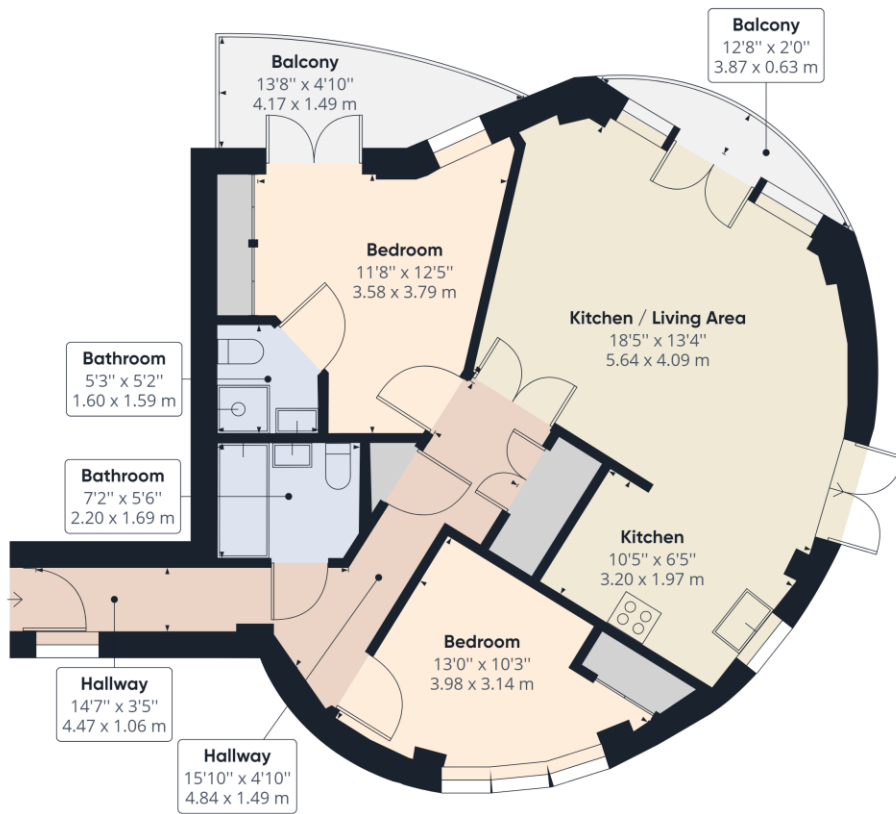
- Two bedroom apartment
- Town centre location
- River views
- Council tax band D
- Undercroft parking space
- Available 6th April
- Furnished



Winkworth

for every step...





Approximate total area⁽¹⁾
783.91 ft²
72.83 m²

(1) Excluding balconies and terraces

While every attempt has been made to ensure accuracy, all measurements are approximate, not to scale. This floor plan is for illustrative purposes only.

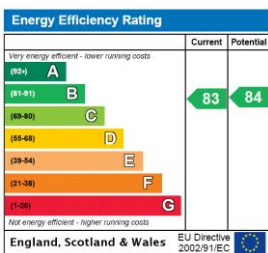
GIRAFFE360

This floorplan is for illustration purposes only and is not to scale. The position and size of doors, windows, appliances and other features are approximate.

Deposit: £1,932.69

Council Tax Band:D

Where no figures are shown, we have been unable to ascertain the information. All figures that are shown were correct at the time of printing.



Reading | 0118 4022 300 | reading@winkworth.co.uk

Winkworth

for every step...

winkworth.co.uk

Winkworth wishes to inform prospective buyers and tenants that these particulars are a guide and act as information only. All our details are given in good faith and believed to be correct at the time of printing but they don't form part of an offer or contract. No Winkworth employee has authority to make or give any representation or warranty in relation to this property. All fixtures and fittings, whether fitted or not are deemed removable by the vendor unless stated otherwise and room sizes are measured between internal wall surfaces, including furnishings.