



HORNSEY ROAD, LONDON, N7  
£630,000 LEASEHOLD

## AN AMAZING TWO BEDROOM, TWO BATHROOM APARTMENT IN ISLINGTON

Islington | 0207 354 2480 | [islington@winkworth.co.uk](mailto:islington@winkworth.co.uk)

**Winkworth**

[winkworth.co.uk](http://winkworth.co.uk)

See things differently



## DESCRIPTION:

A stunning, two double bedroom apartment within a well-maintained gated development moments from Holloway Road tube station. Positioned to the rear of the development, the property is located on the ground floor and spans 742sqft. The open plan living/kitchen is perfectly suited for entertaining and benefits from direct access to a private patio garden. The master bedroom includes built in wardrobes and an ensuite bathroom, the generously-sized second bedroom also has inbuilt storage. The property is completed with a separate w/c and shower room, and if offered to the market on a chain free basis.

Hornsey Road is only a short distance from the ever-popular Holloway Road with restaurants such as Provisions, Zia Lucia and Berto, and even more locally Westerns Laundry on Drayton Park and La Peche Mignon on Ronald's Road. Highbury Barn boasts an array of award-winning food shops and the recently renovated Highbury Barn pub. The property is superbly connected, with Holloway Road Station (Piccadilly line) and Drayton Park Station (Great Northern only 8 mins to Moorgate) being moments away. Highbury & Islington Station (Victoria Line and Overground) and the popular shops and restaurants on Upper Street are easily reached through the green, open spaces of Highbury Fields.

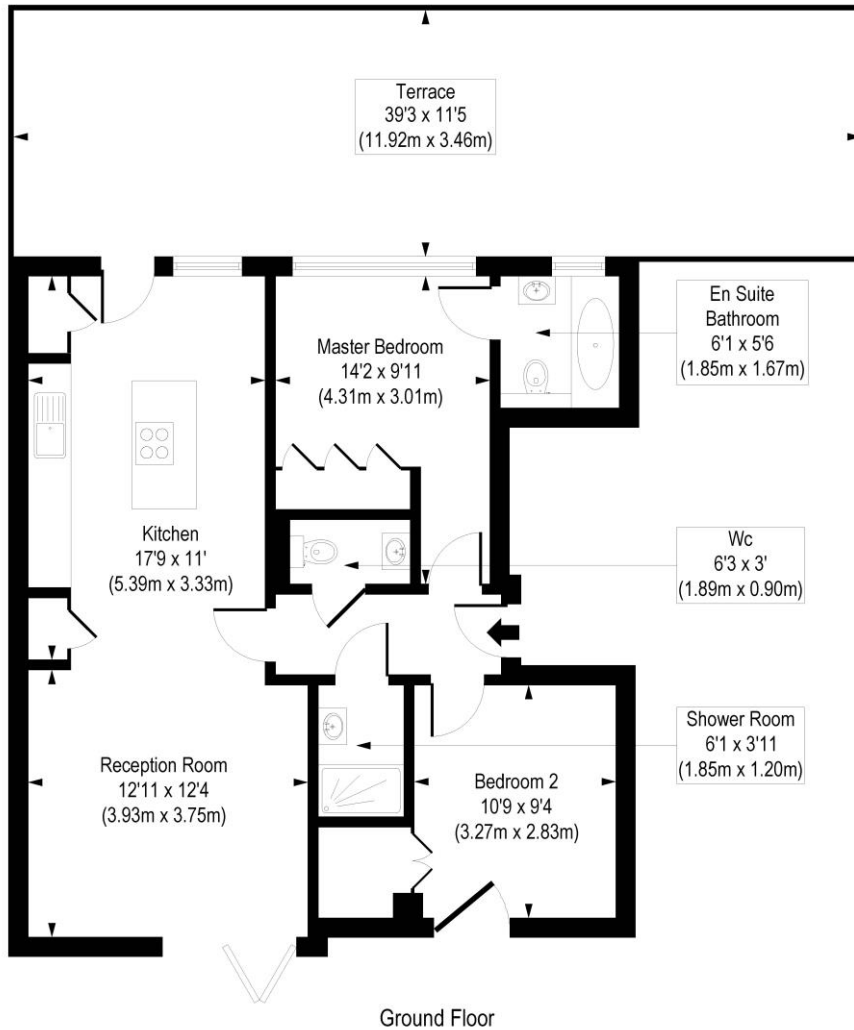
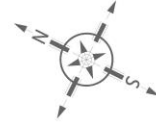
**Winkworth**



**Winkworth**

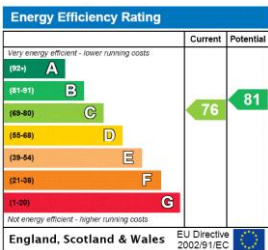
# Hornsey Road, N7

Approx. Gross Internal Floor Area 742 sq. ft / 68.96 sq. m



COMPLIANT WITH RICS CODE OF MEASURING PRACTICE. Floorplan is for illustrative purposes only and is not to scale. Every attempt has been made to ensure the accuracy of the floorplan shown, however all measurements, fixtures, fittings and data shown are an approximate interpretation for illustrative purposes only. Liability for errors, omissions or mis-statement through negligence or otherwise is hereby excluded.

This floorplan is for illustration purposes only and is not to scale. The position and size of doors, windows, appliances and other features are approximate.



Islington | 0207 354 2480 | islington@winkworth.co.uk



winkworth.co.uk

See things differently

Winkworth wishes to inform prospective buyers and tenants that these particulars are a guide and act as information only. All our details are given in good faith and believed to be correct at the time of printing but they don't form part of an offer or contract. No Winkworth employee has authority to make or give any representation or warranty in relation to this property. All fixtures and fittings, whether fitted or not are deemed removable by the vendor unless stated otherwise and room sizes are measured between internal wall surfaces, including fumishings.