



Claverton Street, UK, SW1V

£2,383.33 PER MONTH

FURNISHED

AT A GLANCE

- First Floor Apartment
- Excellent Condition
- Close to Transport
- Prime Location
- High Ceilings
- Balcony

Winkworth

for every step...



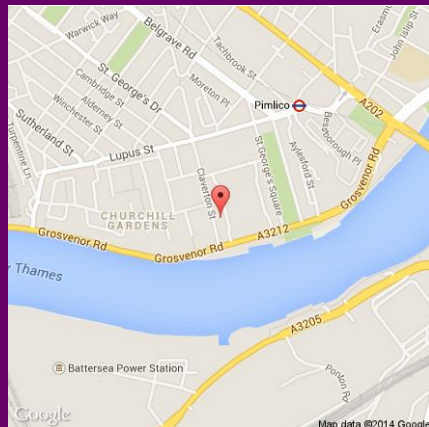
Score	Energy rating	Current	Potential
92+	A		
81-91	B		
69-80	C		76 C
55-68	D	64 D	
39-54	E		
21-38	F		
1-20	G		

CLAVERTON STREET, UK, SW1V

£2,383.33 PER MONTH

FURNISHED

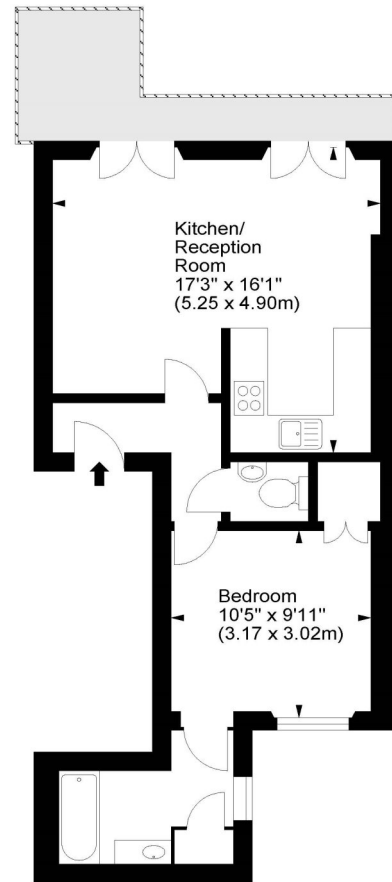
A well located, first floor flat on Claverton Street, SW1V. Accommodation comprises an entrance hall, bedroom with fitted wardrobe, en-suite bathroom, separate toilet, open plan reception with kitchen and a private balcony.



winkworth wishes to inform prospective buyers and tenants that these particulars are a guide and act as information only. All our details are given in good faith and believed to be correct at the time of printing but they don't form part of an offer or contract. No winkworth employee has authority to make or give any representation or warranty in relation to this property. All fixtures and fittings, whether fitted or not are deemed removable by the vendor unless stated otherwise and room sizes are measured between internal wall surfaces - including fireplaces.

Claverton Street, SW1

Approx. Gross Internal Area
467 Sq Ft - 43.38 Sq M



First Floor

For illustration purposes only. Not to scale.
All measurements are taken and shown at floor level.
www.r3photography.co.uk © Photography / Floor Plans / Lease Plans / EPCs



Pimlico & Westminster | 020 7828 1786 |
pimlico@winkworth.co.uk

winkworth.co.uk/pimlico

Winkworth

for every step...