



BROMAR ROAD, CAMBERWELL, LONDON, SE5
OIEO £675,000 SHARE OF FREEHOLD

**AN ABSOLUTELY CHARMING GROUND-FLOOR
 GARDEN FLAT SITUATED IN A PRIME
 LOCATION IN CAMBERWELL.**

Dulwich | 020 8299 2722 | dulwich@winkworth.co.uk

Tenure Share of Freehold 87yrs Lease | Council Tax Band C – London Borough
 of Southwark | EPC Rating D

winkworth.co.uk

Winkworth

See things differently



DESCRIPTION:

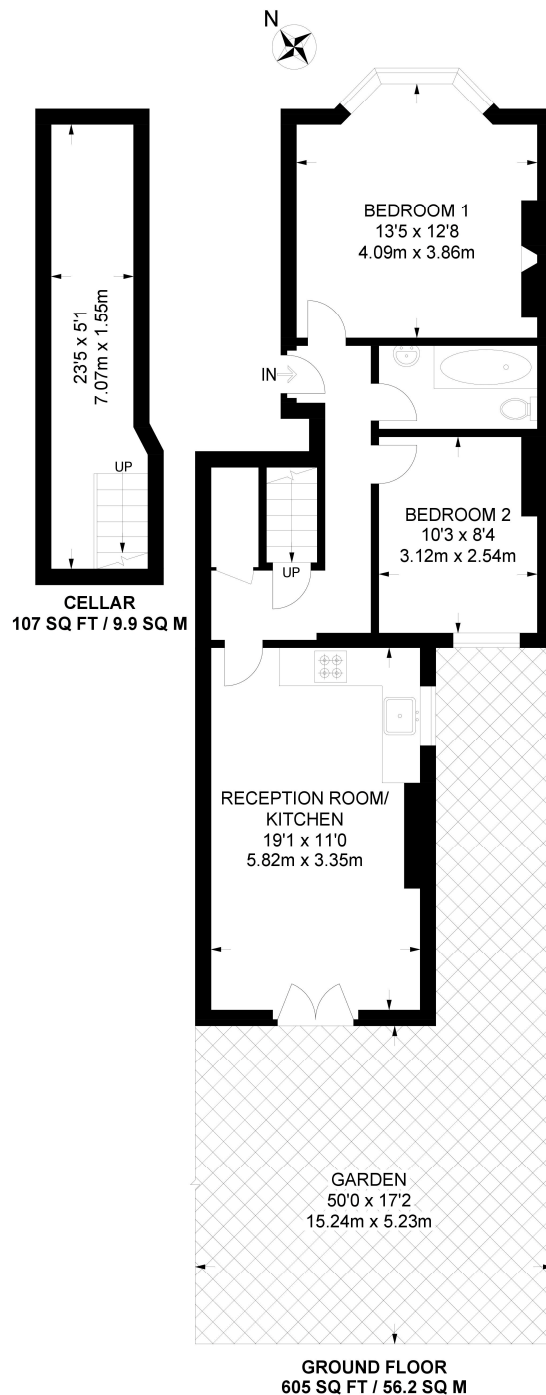
An absolutely charming ground-floor garden flat situated in a prime location in Camberwell. The property boasts two large double bedrooms, a spacious family bathroom, and a truly stunning open-plan kitchen/living room. Finished to a very high standard throughout, it features wooden flooring, wood countertops, a fully integrated kitchen, and original period features that add character and warmth. One of the standout features of this property is the generous private garden, complete with a patio area ideal for summer evenings, and a beautifully mature lawn and planting offering privacy and greenery. Ideally located with easy access to Denmark Hill, East Dulwich, and Peckham Rye stations, this property is exceptionally well-connected for both commuters and those looking to enjoy all that South East London has to offer. The flat is also just a short walk from two of the area's most desirable high streets—Bellenden Road and Lordship Lane—renowned for their vibrant mix of independent shops, restaurants, cafes, and cinemas. This home is perfect for anyone seeking stylish living in a peaceful residential setting, with excellent transport links and a thriving local community just moments away.

AT A GLANCE

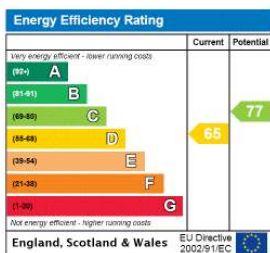
- Ground-Floor Garden Flat
- Prime Camberwell Location
- Two Double Bedrooms
- Large Private Garden
- Excellent Transport Links







APPROXIMATE GROSS INTERNAL AREA: 605 SQ FT / 56.2 SQ M
TOTAL AREA(INCLUDING CELLAR): 712 SQ FT / 66.1 SQ M



Dulwich | 020 8299 2722 | dulwich@winkworth.co.uk

Winkworth

winkworth.co.uk

See things differently

Winkworth wishes to inform prospective buyers and tenants that these particulars are a guide and act as information only. All our details are given in good faith and believed to be correct at the time of printing but they don't form part of an offer or contract. No Winkworth employee has authority to make or give any representation or warranty in relation to this property. All fixtures and fittings, whether fitted or not are deemed removable by the vendor unless stated otherwise and room sizes are measured between internal wall surfaces, including furnishings.