



Mathison House, Coleridge Gardens, London, SW10

£923 per week – Furnished

An exceptional two double bedroom flat located on the ground floor of this sought-after development.

2 Bedrooms | 1 Reception Room | 2 Bathrooms | Ground Floor | 24 Hour Concierge | Communal Gardens | Communal Gym and Swimming Pool | Off-Street Parking | 1,041 Approx sq ft | EPC: C

APPLICANT FEES MAY BE APPLICABLE

Winkworth

winkworth.co.uk

See things differently



DESCRIPTION

An exceptional two double bedroom flat located on the ground floor of this sought-after development. This spacious flat is dual-aspect and therefore extremely bright, has air conditioning and benefits from wooden floors in the reception room. There is a separate kitchen, a good sized master bedroom with en-suite bathroom with a separate bath and shower, and a further bedroom which has use of a separate shower room. The flat also benefits from an underground parking space and use of facilities including swimming pool, gym and tennis court set in 7.5 acres of grounds. King's Chelsea is a popular and secure gated development with 24 hour porter and landscaped communal garden. The flat is available now on a furnished basis.



ACCOMMODATION

2 Bedrooms, 1 Reception Room, 2 Bathrooms,
Ground Floor Flat, 24 Hour Concierge,
Communal Gardens, Communal Gym and
Swimming Pool, Furnished, 1,014 Approx Sq ft

COUNCIL TAX BAND

Band G



Energy Efficiency Rating		Current	Potential
Very energy efficient - lower running costs			
(92+)	A		
(81-91)	B		
(69-80)	C	78	81
(55-68)	D		
(39-54)	E		
(21-38)	F		
(1-20)	G		
Not energy efficient - higher running costs			
England, Scotland & Wales		EU Directive 2002/91/EC	

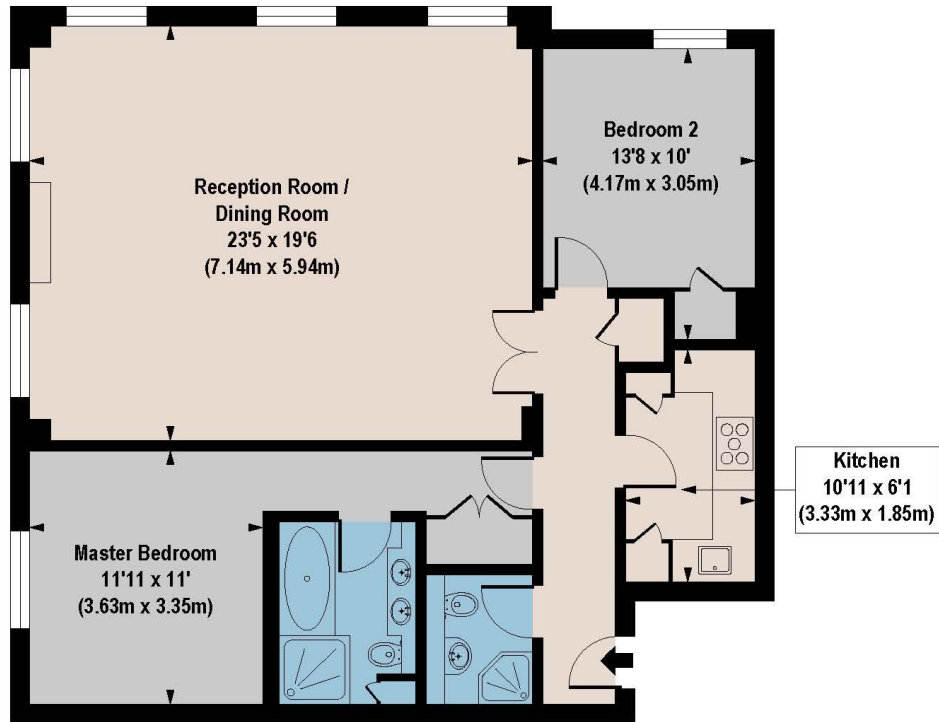


MATHISON HOUSE, SW10

APPROX. GROSS INTERNAL AREA*
1041 Ft² - 96.75 M²

Illustration For Identification Only, Not to Scale
All Calculations include Any/All Areas Under 1.5m Head Height.

* As Defined by RICS - Code of Measuring Practice



GROUND FLOOR

Floorplan is for illustrative purposes only and is not to scale.
Every attempt has been made to ensure the accuracy of the floorplan shown, however all measurements, fixtures, fittings and data shown are an approximate interpretation for illustrative purposes only.
Liability for errors, omissions or mis-statement through negligence or otherwise is hereby excluded.

CPCREATIVE
PROPERTY MARKETING

Winkworth

South Kensington Lettings | 020 7370 6767 | lettings.southken@winkworth.co.uk

winkworth.co.uk

See things differently

Winkworth wishes to inform prospective buyers and tenants that these particulars are a guide and act as information only. All our details are given in good faith and believed to be correct at the time of printing but they don't form part of an offer or contract. No Winkworth employee has authority to make or give any representation or warranty in relation to this property. All fixtures and fittings, whether fitted or not are deemed removable by the vendor unless stated otherwise and room sizes are measured between internal wall surfaces, including furnishings.