



Todd Close, Hertfordshire, WD6

£300,000 *Leasehold*



CHAIN FREE TWO BEDROOM FIRST FLOOR APARTMENT IN SOUTH BOREHAMWOOD

KEY FEATURES

- 2 Bedrooms
- Entrance Hall
- Kitchen Dining Room
- Living Room
- Bathroom
- Roof Terrace



Borehamwood

020 8953 8899 | borehamwood@winkworth.co.uk

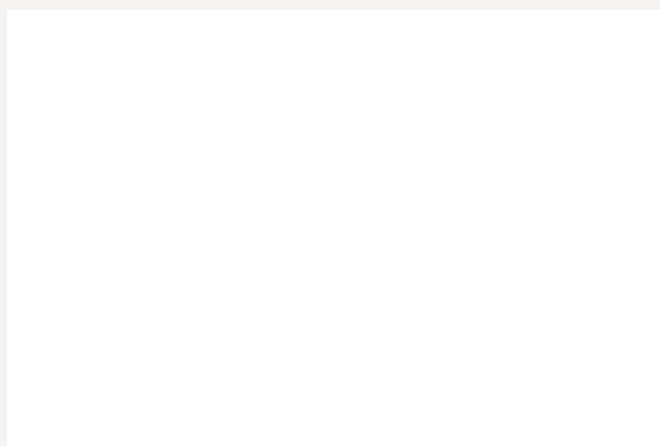


Winkworth are delighted to offer for sale this chain free Two bedroom apartment. Offering open plan kitchen, dining area and lounge. The lounge contains French doors which lead to a south facing balcony. You have a spacious hallway with two cupboards affording ample storage, two bedrooms along with a modern three piece bathroom. The apartment also comes with an allocated covered parking space.

The property is conveniently located with walking distance of Elstree and Borehamwood Station Aswell as the high street with an array of shops, bars and restaurants.

Ideal purchase for first Time buyers and investors alike.





MATERIAL INFO

Tenure: Leasehold

Term: 110 year and 3 months

Service Charge: £3612 per annum

Ground Rent: £ 250 Annually (subject to increase)

Council Tax Band: C

EPC rating: B

Approximate Gross Internal Area = 59.8 sq m / 644 sq ft

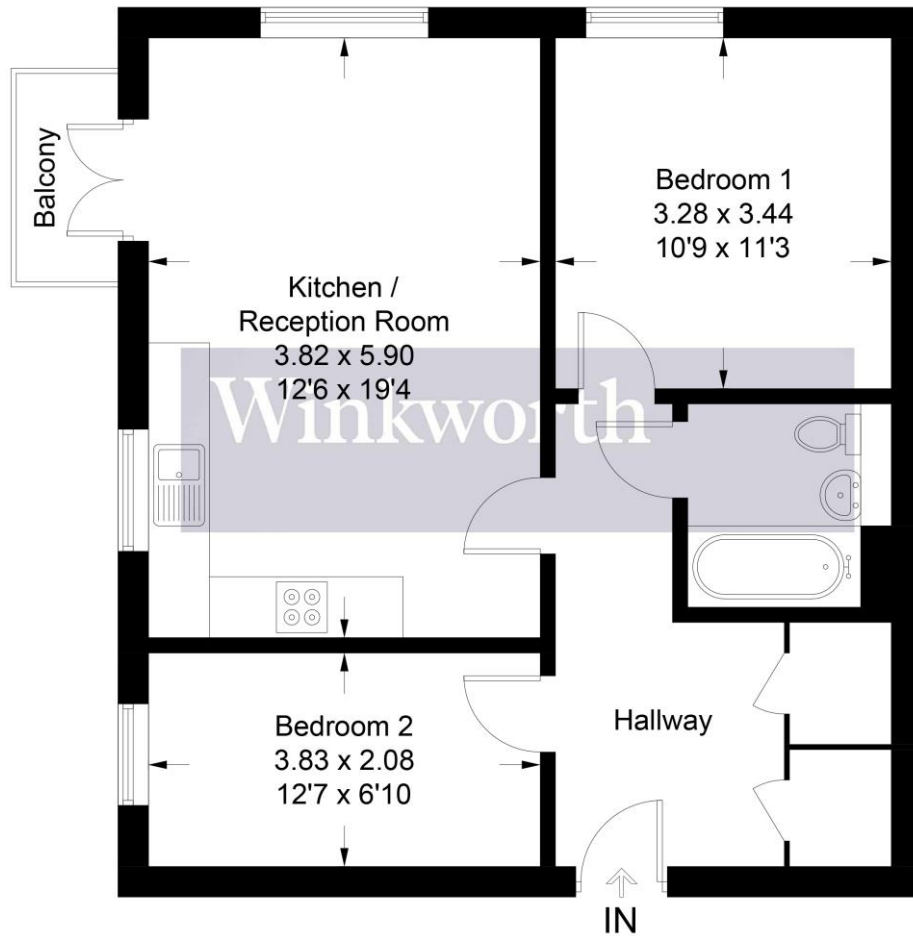
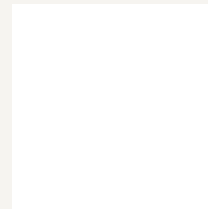


Illustration for identification purposes only, measurements are approximate, not to scale. Winkworth © 2025 (ID1161511)

Energy Efficiency Rating		
	Current	Potential
Very energy efficient - lower running costs		
(92+) A		
(81-91) B	83	83
(69-80) C		
(55-68) D		
(39-54) E		
(21-38) F		
(1-20) G		
Not energy efficient - higher running costs		
England, Scotland & Wales	EU Directive 2002/91/EC	

For more information, scan the QR code or visit the link below



<https://www.winkworth.co.uk/sale/property/BOR250007>

Where no figures are shown, we have been unable to ascertain the information. All figures that are shown were correct at the time of printing.

Borehamwood

020 8953 8899 | borehamwood@winkworth.co.uk