



SALEHURST CLOSE, HARROW, MIDDLESEX, HA3

£750,000 FREEHOLD

CHARMING SEMI DETACHED PERIOD HOME WITH ENDLESS POTENTIAL

Kingsbury | 020 8204 0000 | kingsbury@winkworth.co.uk

Winkworth

for every step...

winkworth.co.uk



Located just off the Kenton Road, this semi-detached house offers a rare opportunity to transform a period property into a modern family haven. Full of character and boasting a spacious layout, the ground floor features a lounge and a separate dining room, providing distinct spaces for relaxation and hosting, as well as a W/C. With three well-proportioned bedrooms on the first floor, and a family bathroom, as well as an extended fourth bedroom in the loft, the home offers ample foundations for a growing family. To the side, a generous garage adds practicality and scope for additional storage or future expansion (STPP). The large garden is a fantastic blank canvas, perfect for creating an outdoor sanctuary for family and friends. Situated within walking distance of acclaimed schools, including Claremont High, and close to local amenities and excellent transport links, this property combines convenience with immense potential. If you're looking for a project to create your dream home in a prime location, this period gem is not to be missed.



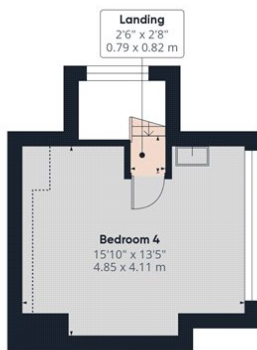
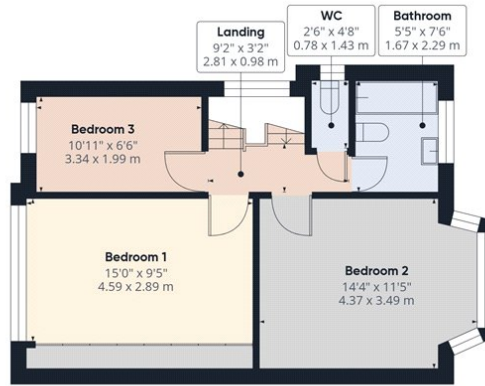
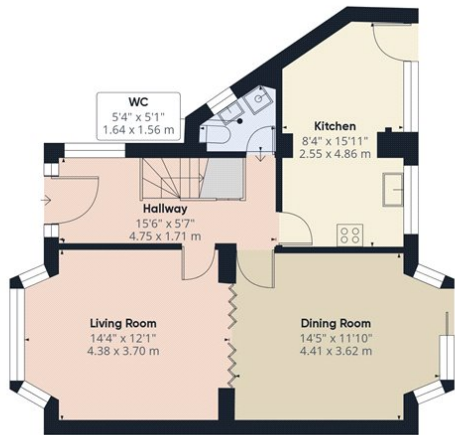
Winkworth

for every step...



Winkworth

for every step...



Winkworth

Approximate total area⁽¹⁾

1247.97 ft²
115.94 m²

Reduced headroom

15.08 ft²
1.4 m²

(1) Excluding balconies and terraces

Reduced headroom

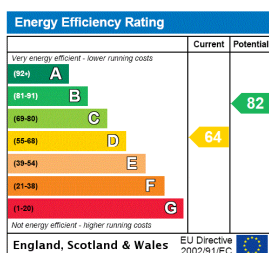
Below 5 ft/1.5 m

While every attempt has been made to ensure accuracy, all measurements are approximate, not to scale. This floor plan is for illustrative purposes only.

Calculations are based on RICS IPMS 3C standard.

GIRAFFE360

This floorplan is for illustration purposes only and is not to scale. The position and size of doors, windows, appliances and other features are approximate.



Tenure: Freehold

Council Tax Band: F - Brent

Where no figures are shown, we have been unable to ascertain the information. All figures that are shown were correct at the time of printing.

Kingsbury | 020 8204 0000 | kingsbury@winkworth.co.uk

Winkworth

for every step...

winkworth.co.uk

Winkworth wishes to inform prospective buyers and tenants that these particulars are a guide and act as information only. All our details are given in good faith and believed to be correct at the time of printing but they don't form part of an offer or contract. No Winkworth employee has authority to make or give any representation or warranty in relation to this property. All fixtures and fittings, whether fitted or not are deemed removable by the vendor unless stated otherwise and room sizes are measured between internal wall surfaces, including furnishings.