

CHURCHILL GARDENS, SW1V

£395,000

LEASEHOLD

At a glance...

- One Double Bedroom
- Separate Kitchen
- Balcony
- Well Presented
- Lovely Green Outlook
- Council Tax Band: B

Winkworth

for every step...



Score	Energy rating	Current	Potential
92+	A		
81-91	B		
69-80	C	70 C	72 C
55-68	D		
39-54	E		
21-38	F		
1-20	G		

CHURCHILL GARDENS, SW1V

£395,000

LEASEHOLD

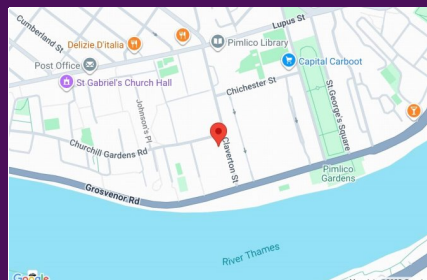
An incredibly bright and well-presented one bedroom flat on the 1st floor of this popular purpose-built building.

The bedroom, reception room and balcony all overlook the internal garden square meaning the flat has a lovely green outlook and a feeling of privacy.

Lived in by the current owners the flat is stylish, homely and offers great living space with a large separate modern kitchen, good bathroom, super reception room, double bedroom and aforementioned balcony.

Heating and hot water is included in the service charges and the flat is being sold with an extended lease.

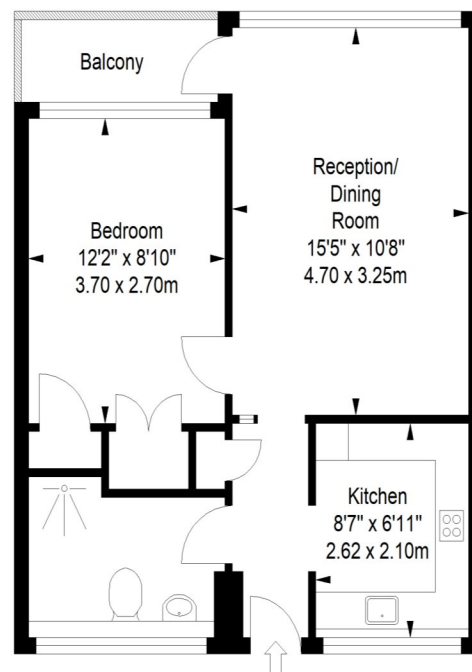
An ideal London base on lovely 1st home in SW1, close to Pimlico, Victoria and Vauxhall stations.



winkworth wishes to inform prospective buyers and tenants that these particulars are a guide and act as information only. All our details are given in good faith and believed to be correct at the time of printing but they don't form part of an offer or contract. No winkworth employee has authority to make or give any representation or warranty in relation to this property. All fixtures and fittings, whether fitted or not are deemed removable by the vendor unless stated otherwise and room sizes are measured between internal wall surfaces including fireplaces.

Whitley House

Approximate Gross Internal Area
448 sq ft / 41.69sq m



First Floor

ILLUSTRATION FOR IDENTIFICATION PURPOSES ONLY

ALL MEASUREMENTS ARE MAXIMUM, AND INCLUDE WINDOW BAYS AND WARDROBES WHERE APPLICABLE
THIS PLAN MUST NOT BE REPRODUCED BY ANY OTHER PERSON WITHOUT PERMISSION

Pimlico & Westminster

020 7828 1786

pimlico@winkworth.co.uk

winkworth.co.uk/pimlico-westminster

Winkworth

for every step...