



**RIVERSIDE HOUSE, READING, BERKSHIRE, RG1 6BJ**  
**£2,100 PER MONTH FURNISHED**

## **THIRD FLOOR THREE DOUBLE BEDROOM APARTMENT IN THIS POPULAR RIVERSIDE DEVELOPMENT IN READING TOWN CENTRE**

Reading | 0118 4022 300 | [reading@winkworth.co.uk](mailto:reading@winkworth.co.uk)

**Winkworth**

for every step...

[winkworth.co.uk](http://winkworth.co.uk)





## DESCRIPTION:

Third floor three bedroom apartment in this popular riverside development in Reading Town Centre. Offering excellent access to Reading train station, bus routes and major transport links via the A329 and M4. Accommodation is well presented and comprises open plan living space with a fitted kitchen, master bedroom with en suite shower room and balcony, an additional two double bedrooms and a three piece bathroom. The property further benefits from a second balcony, secure under croft parking space, intercom entry and lift access. Available now. Furnished.

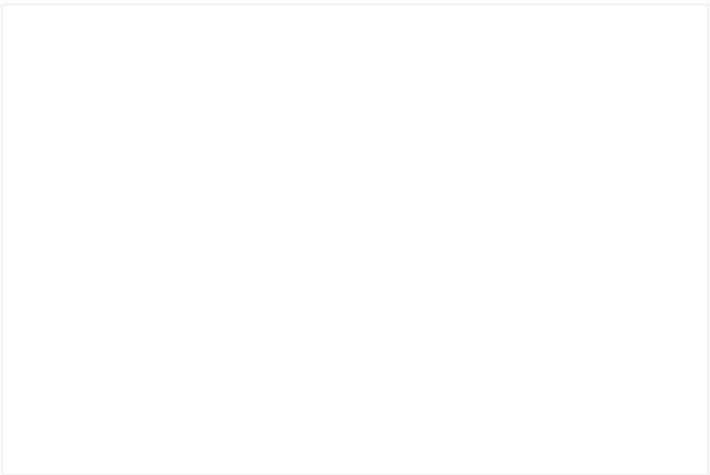
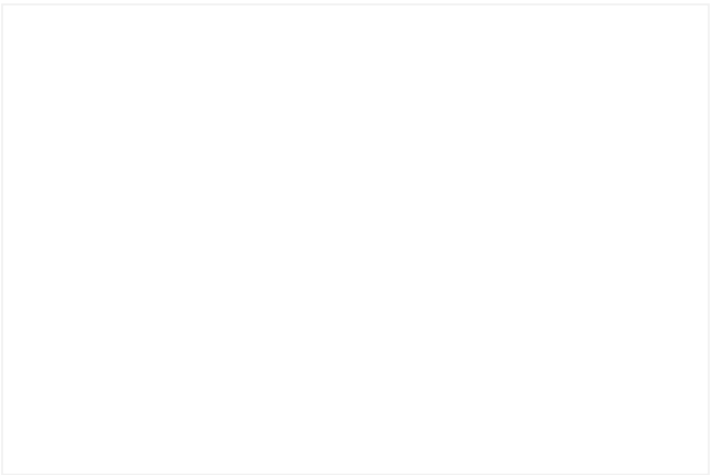
## AT A GLANCE

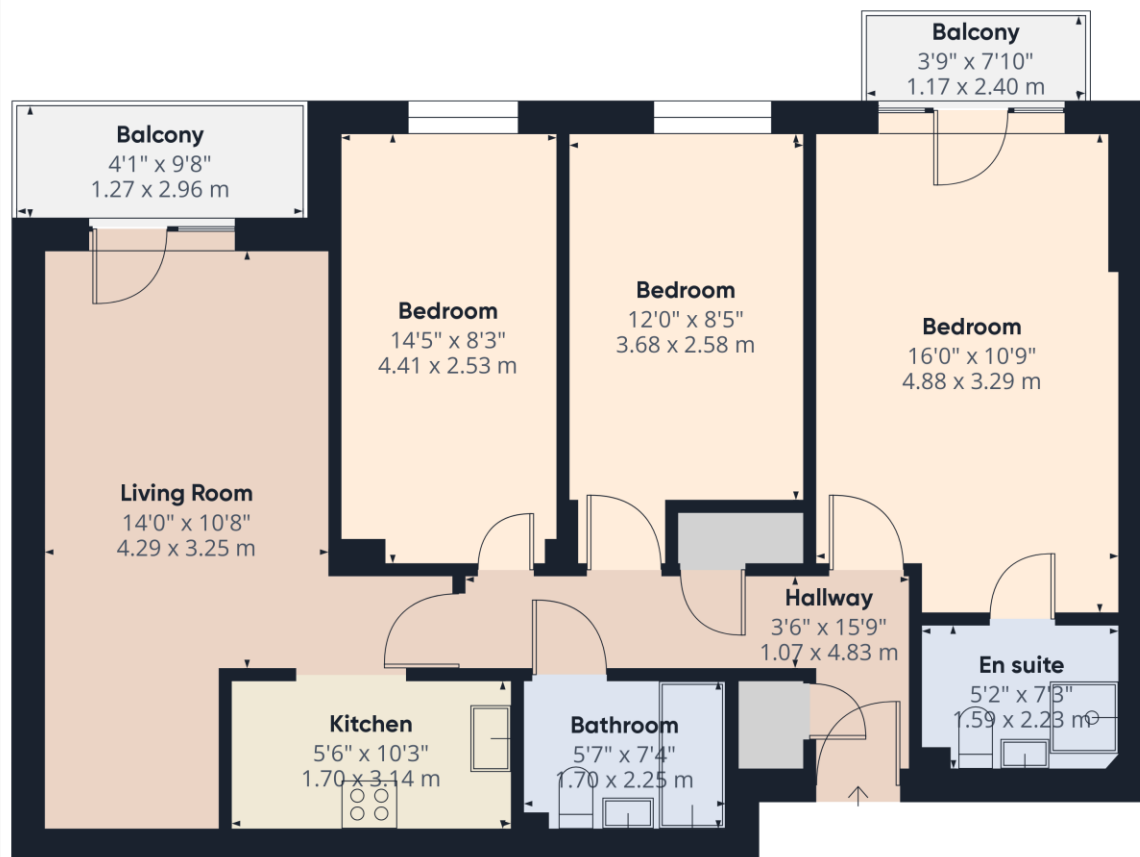
- Three Double Bedrooms
- Town centre location
- Two Bathrooms
- Council Tax Band D
- Two balconies overlooking Kennet & Avon Canal
- Allocated Under Parking Space
- Available now
- Furnished











**Approximate total area<sup>(1)</sup>**  
829.57 ft<sup>2</sup>  
77.07 m<sup>2</sup>

**Balconies and terraces**  
70.07 ft<sup>2</sup>  
6.51 m<sup>2</sup>

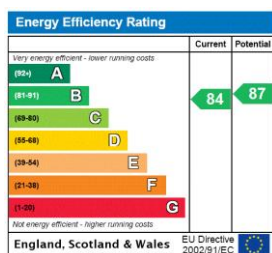
(1) Excluding balconies and terraces

While every attempt has been made to ensure accuracy, all measurements are approximate, not to scale. This floor plan is for illustrative purposes only.

Calculations were based on RICS IPMS 3C standard. Please note that calculations were adjusted by a third party and therefore may not comply with RICS IPMS 3C.

GIRAFFE 360

This floorplan is for illustration purposes only and is not to scale. The position and size of doors, windows, appliances and other features are approximate.



**Deposit: £2,423.08**

**Holding Deposit: £484.61**

**Council Tax Band: D**

Where no figures are shown, we have been unable to ascertain the information. All figures that are shown were correct at the time of printing.

Reading | 0118 4022 300 | [reading@winkworth.co.uk](mailto:reading@winkworth.co.uk)

**Winkworth**

for every step...

[winkworth.co.uk](http://winkworth.co.uk)

Winkworth wishes to inform prospective buyers and tenants that these particulars are a guide and act as information only. All our details are given in good faith and believed to be correct at the time of printing but they don't form part of an offer or contract. No Winkworth employee has authority to make or give any representation or warranty in relation to this property. All fixtures and fittings, whether fitted or not are deemed removable by the vendor unless stated otherwise and room sizes are measured between internal wall surfaces, including furnishings.