



BRADBURY MEWS, LONDON, N16
£790,000 FREEHOLD

**A STUNNING, TWO DOUBLE BEDROOM MEWS
 HOUSE SET IN VIBRANT DALSTON WITH
 SUPERB TRANSPORT LINKS.**

Highbury | 0207 989 7000 | highbury@winkworth.co.uk

Winkworth

winkworth.co.uk

See things differently



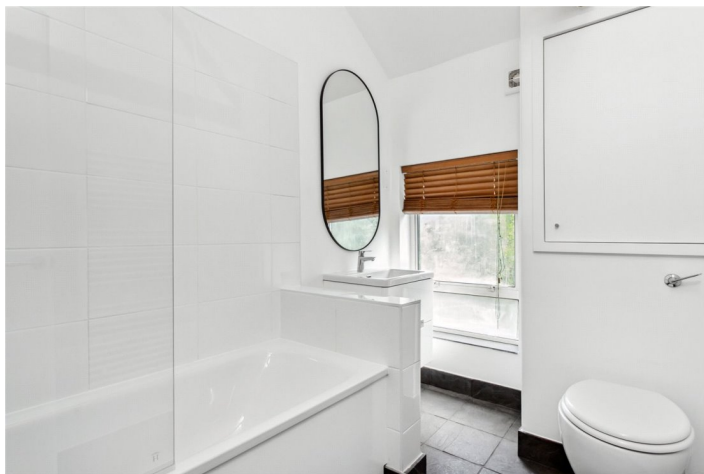
DESCRIPTION:

A wonderfully bright, two double bedroom mews house set in a friendly, gated community in Dalston, N16. Offered to the market on a chain free basis, the property gives any potential purchaser an exciting opportunity to put their own stamp on the property, while having tremendous bones. After stepping foot through your own front door, you're welcomed into the spacious living room/kitchen area with exposed beams, and double doors opening out into your oasis of a front garden, complete with a pergola creating a fantastic entertaining space. Original exposed beams and sky lights can be found throughout the property, with two double bedrooms on the first floor both having double height ceilings for a true sense of space. A modern and contemporary bathroom finalises the property.

Bradbury Mews lies at the heart of Dalston. Contemporary Dalston is a lively neighbourhood with a diverse and vibrant population. Excellent transport links, shops and entertainment options are on the doorstep, this micro-community is at the centre of a thriving creative neighbourhood. The buzz of Central Hackney, Lido, sports courts, and summer meadow of London Fields, and numerous boutique independent shops, cafes, and restaurants of this creative community are within easy reach also.

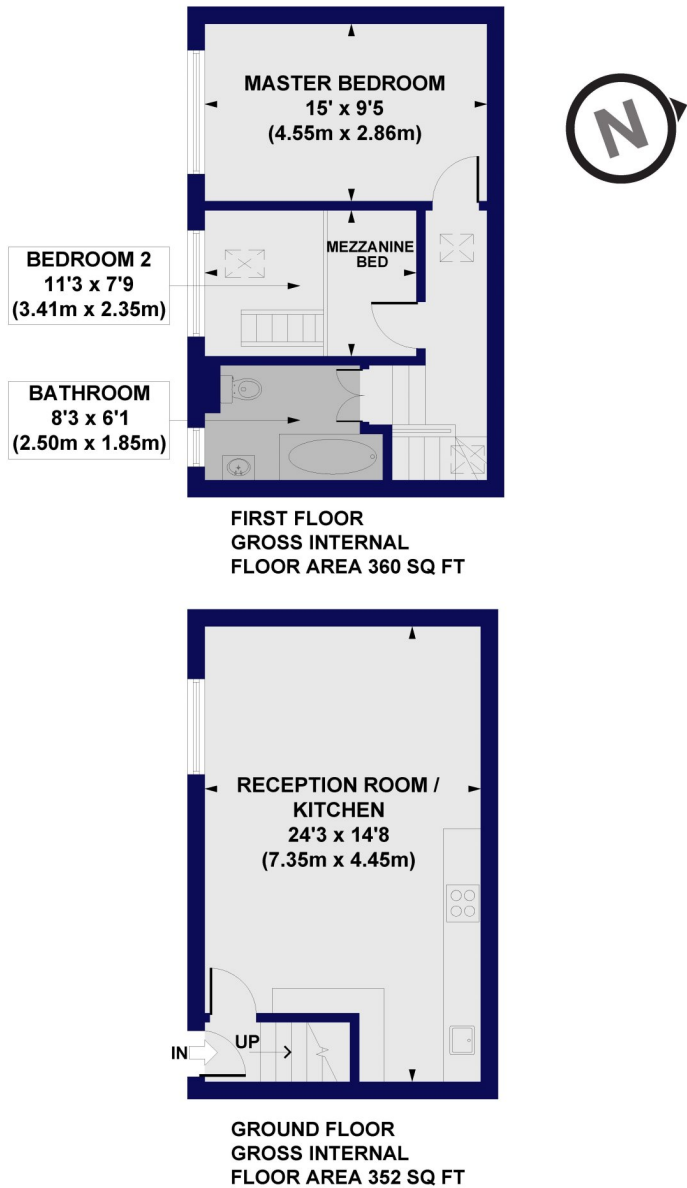
Dalston Kingsland and Dalston Junction overground stations, several bus and cycle routes are all within a couple of minutes' walk, with sub-20 minute journeys to the City and West End, fast links to the Elizabeth Line and Canary Wharf, and direct journeys across the river to Bermondsey, London Bridge and beyond.

Winkworth



Winkworth

Bradbury Mews, N16 **Approx. Gross Internal Floor Area 712 sq. ft / 66.20 sq. m**



All measurements of walls, doors, windows, fittings and appliances, including their size and location, are shown as standard sizes and do not constitute any warranty or representation by the seller, their agent or CP Creative. Any intending purchaser must satisfy himself by inspection or otherwise as to the correctness of the information contained in these plans. This plan is for illustrative purposes only and should be used as such by any prospective purchasers.



This floorplan is for illustration purposes only and is not to scale. The position and size of doors, windows, appliances and other features are approximate.

Score	Energy rating	Current	Potential
92+	A		
81-91	B		
69-80	C		80 C
55-68	D	59 D	
39-54	E		
21-38	F		
1-20	G		

Highbury | 0207 989 7000 | highbury@winkworth.co.uk



winkworth.co.uk

See things differently

Winkworth wishes to inform prospective buyers and tenants that these particulars are a guide and act as information only. All our details are given in good faith and believed to be correct at the time of printing but they don't form part of an offer or contract. No Winkworth employee has authority to make or give any representation or warranty in relation to this property. All fixtures and fittings, whether fitted or not are deemed removable by the vendor unless stated otherwise and room sizes are measured between internal wall surfaces, including furnishings.