



ARUNDEL DRIVE, WD6
£300,000 LEASEHOLD

**A MODERN AND WELL PRESENTED CHAIN FREE
TWO DOUBLE BEDROOM TWO BATHROOM FIRST
FLOOR APARTMENT.**

Borehamwood | 020 8953 8899 | borehamwood@winkworth.co.uk



DESCRIPTION:

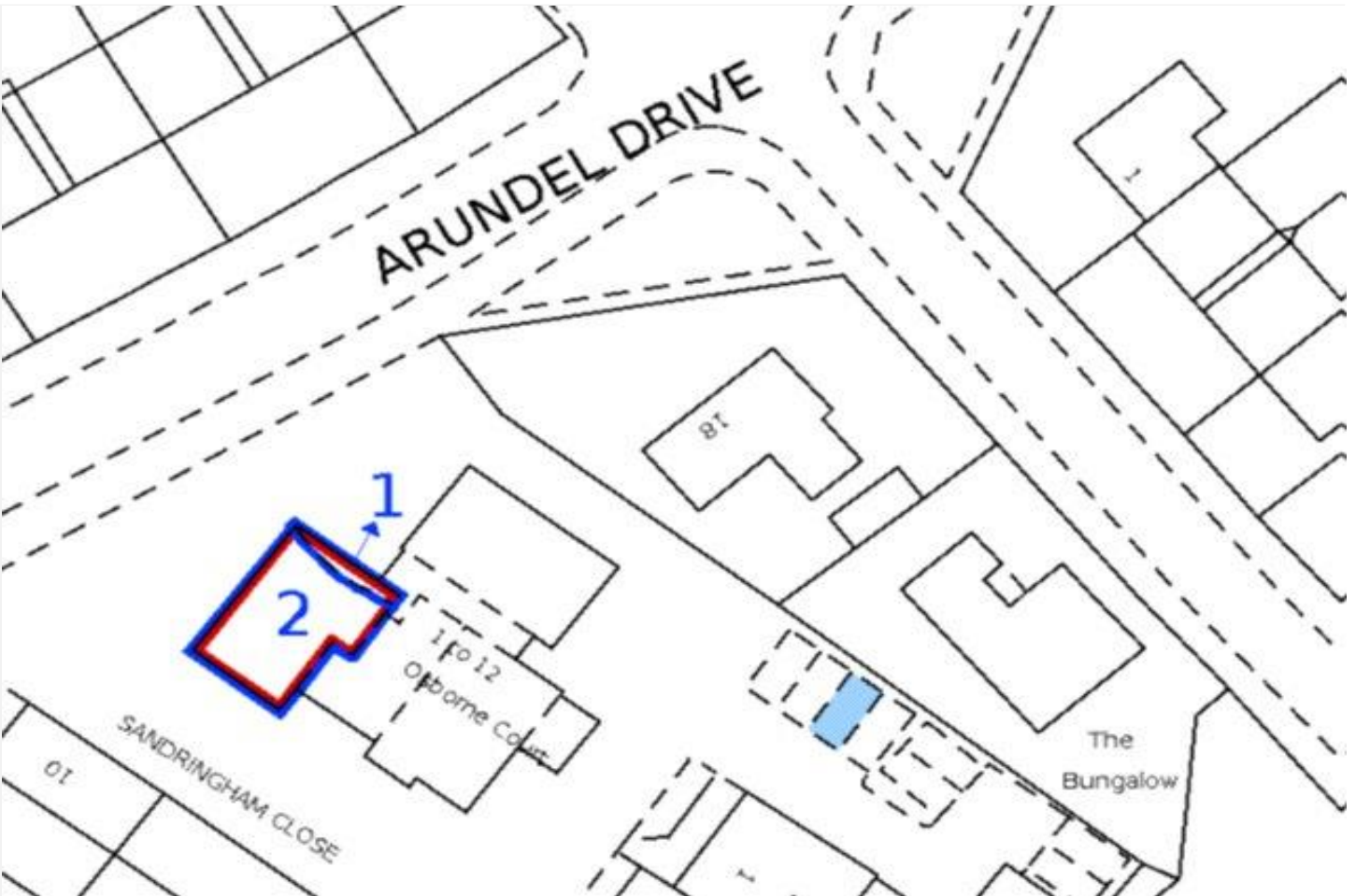
Situated on the highly desirable South side of Borehamwood is this chain free, modern and well-presented two double bedroom, two bathroom first floor purpose built flat.

With well proportioned accommodation totalling in excess of 700 square feet and an allocated parking space to rear the property would be ideal for buy to let investors and first time buyers alike. Viewing highly recommended.

AT A GLANCE

- 2 Bedrooms
- South Borehamwood
- 712 Square Feet
- Allocated Parking Space
- Two Bathrooms
- Chain Free
- Dual Aspect Lounge
- Communal Gardens





Approximate Gross Internal Area
66.2 sq m / 712 sq ft

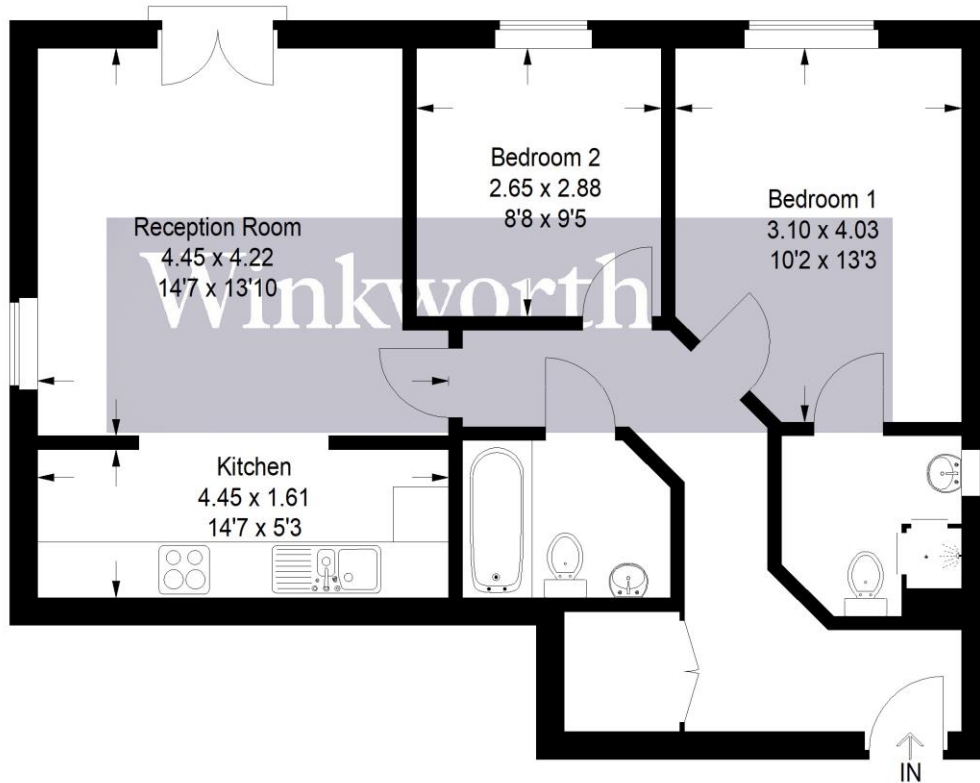
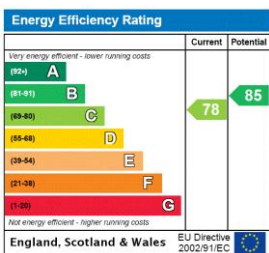


Illustration for identification purposes only, measurements are approximate, not to scale. Winkworth © 2022 (ID 827496)

This floorplan is for illustration purposes only and is not to scale. The position and size of doors, windows, appliances and other features are approximate.



Tenure: Leasehold
Term: Expires - 23/06/2110
Service Charge: £0 per annum
Ground Rent: £ 0 Annually (subject to increase)
Council Tax Band: D

Where no figures are shown, we have been unable to ascertain the information. All figures that are shown were correct at the time of printing.