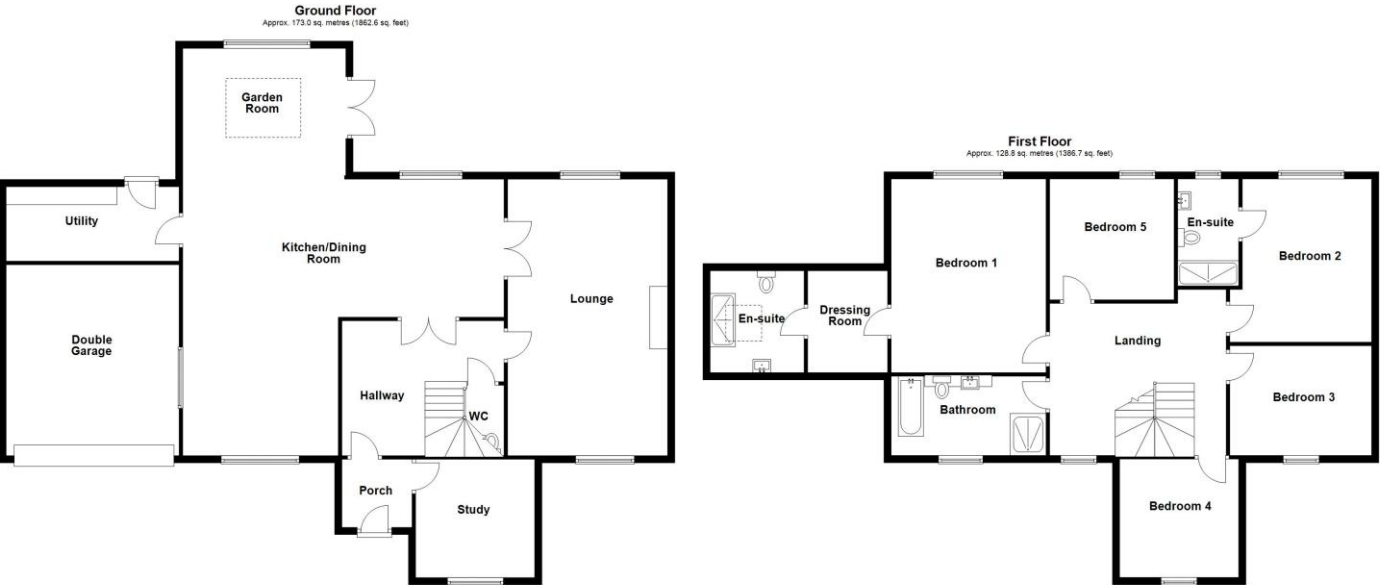
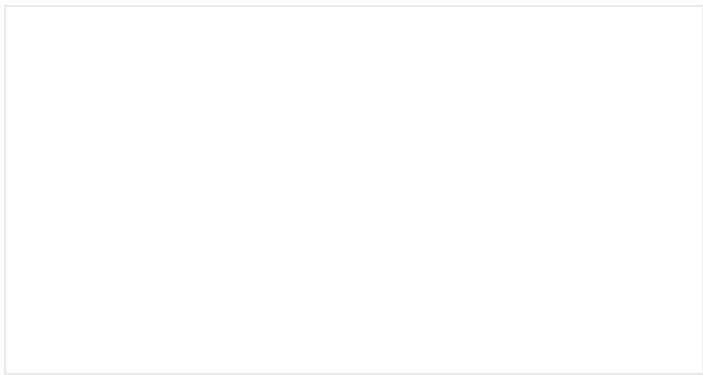


Plot 5, George Street, Helpringham, Sleaford

This floorplan is for illustration purposes only and is not to scale. The position and size of doors, windows, appliances and other features are approximate.



Total area: approx. 301.9 sq. metres (3249.3 sq. feet)



Plot 5, George Street, Helpringham, Sleaford, NG34 0RS

£700,000 Freehold

Stunning Executive New Build Home with Countryside Views – 5 Bedrooms, 3 Bathrooms, Double Garage in the ever popular village of Helpringham. Nestled in a peaceful rural setting with expansive views over open countryside, this exceptional newly built home combines classic brick architecture with spacious modern living. Situated on a generous plot in a desirable village location, this property offers the perfect balance of tranquil surroundings and high-spec contemporary interiors. Featuring a spacious kitchen/dining room with garden room, large lounge, study, utility, and two en-suites including a principal suite with dressing room. Generous sized garden with open countryside views. Approx. 3,249 sq ft. Double garage & driveway parking. Call 01529 303377 to arrange an early viewing now to appreciate what this truly stunning property has to offer.

5 double bedrooms, 3 bathrooms | Stylish kitchen/dining area with garden room | Utility room and double garage | Separate study and spacious lounge | Large landscaped rear garden with countryside views | Traditional brick construction with tiled roof | Peaceful village setting



See things differently.



See things differently.

Winkworth Sleaford | 01529 303377 | sleaford@winkworth.co.uk

winkworth.co.uk/sleaford

Under the Property Misdescriptions Act 1991 these particulars are a guide and act as information only. All details are given in good faith and are believed to be correct at time of printing. Winkworth give no representation as to their accuracy and potential purchasers or tenants must satisfy themselves or otherwise as to their correctness. No employee of Winkworth has authority to make or give any representation or warranty in relation to this property.

ACCOMMODATION

Lounge - 25'3" x 14'5" (7.7m x 4.4m)

Kitchen Dining Room - 28'10" x 25'3" (8.8m x 7.7m)

Sun Room - 14'1" x 11'6" (4.3m x 3.5m)

Study - 10'10" x 10'10" (3.3m x 3.3m)

Utility Room - 15'9" x 6'7" (4.8m x 2m)

Garage - 17'5" x 15'9" (5.3m x 4.8m)

WC

Bedroom 1 - 17'9" x 14'1" (5.4m x 4.3m)

Dressing Room

En-Suite - 9'2" x 6'3" (2.8m x 1.9m)

Bedroom 2 - 12'10" x 11'6" (3.9m x 3.5m)

Ensuite Bathroom - 9'6" x 5'7" (2.9m x 1.7m)

Bedroom 3 - 12'10" 8'6" (3.9m 2.6m)

Bedroom 4 - 10'10" x 10'10" (3.3m x 3.3m)

Bedroom 5 - 12'2" x 11'6" (3.7m x 3.5m)

