



Flat 43, Moores Court, Jermyn Street, Sleaford, Lincolnshire, NG34 7UL

£699,950 Leasehold

NO CHAIN Winkworth are delighted to offer for sale this spacious One Bedroom Over 60's Second Floor Apartment built by McCarthy & Stone.

Situated in the town centre, the apartment has been extremely well maintained and benefits from accommodation comprising of an Entrance Hall, Lounge, Kitchen, Bathroom and a generously sized Bedroom.

Apartment in town centre | Apprx 100 Years remaining on lease | 1 Large double Bedroom | Lounge & Kitchen | Shower Room | UPVC Glazing | Pretty Communal Gardens | Over 60's Development

LOCATION

DESCRIPTION

ACCOMMODATION

Entrance Hall - Large storage cupboard housing the heating boiler and shelving.

Lounge - 17'6" x 10'2" (5.33m x 3.1m) The lounge has a window overlooking the rear garden and the River Sleat.

Kitchen - 7' x 7'3" (2.13m x 2.2m) Fully fitted with low level and eye level units to three sides, plenty of work surface and tiled splashbacks. Integrated electric ceramic hob with extractor over, space for fridge and freezer, there is also an eye level oven. Single drainer sink and window to

Shower Room - Fully tiled shower room with vanity inset sink, low level WC and large shower unit.

Bedroom One - 12'2" x 8'7" (3.7m x 2.62m) Main Bedroom with window overlooking the rear, built in mirrored double wardrobe and electric

LOCAL AUTHORITY

North Kesteven District Council

TENURE

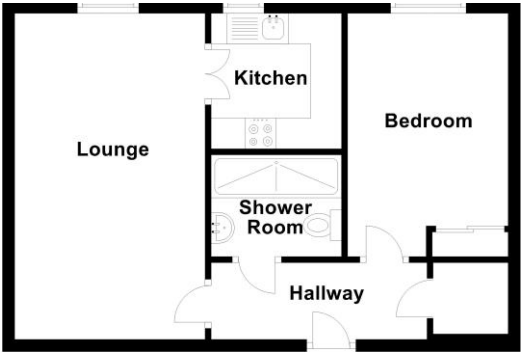
Leasehold

COUNCIL TAX BAND

A



Score	Energy rating	Current	Potential
92+	A		
81-91	B		
69-80	C	80 C	84 B
55-68	D		
39-54	E		
21-38	F		
1-20	G		



Total area: approx. 42.8 sq. metres (460.7 sq. feet)

This floorplan is for illustration purposes only and is not to scale. The position and size of doors, windows, appliances and other features are approximate.

