



LADBROKE GROVE, LONDON, W10  
£2,150 PER MONTH

## CONTEMPORARY TWO BEDROOM, TWO BATHROOM APARTMENT IN LADBROKE GROVE NOTTING HILL

North Kensington | 020 7792 5000 | northkensington@winkworth.co.uk

**Winkworth**

for every step...

*winkworth.co.uk*

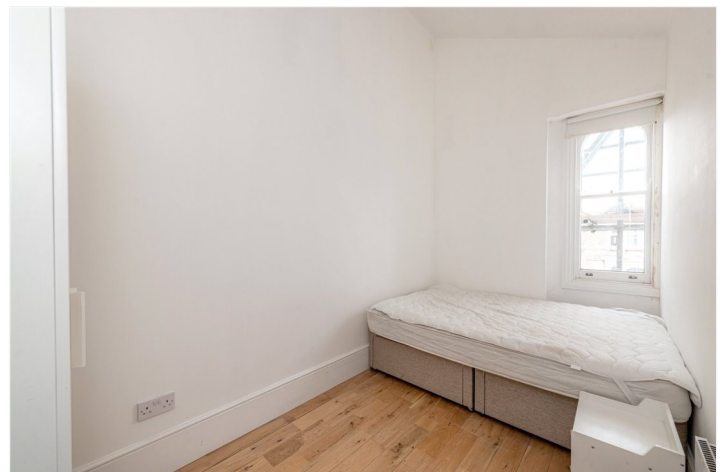


## DESCRIPTION:

Fantastic two bedroom apartment with two bathrooms set on the top floor of this Victorian Building in the heart of Ladbrooke Grove ,North Kensington.

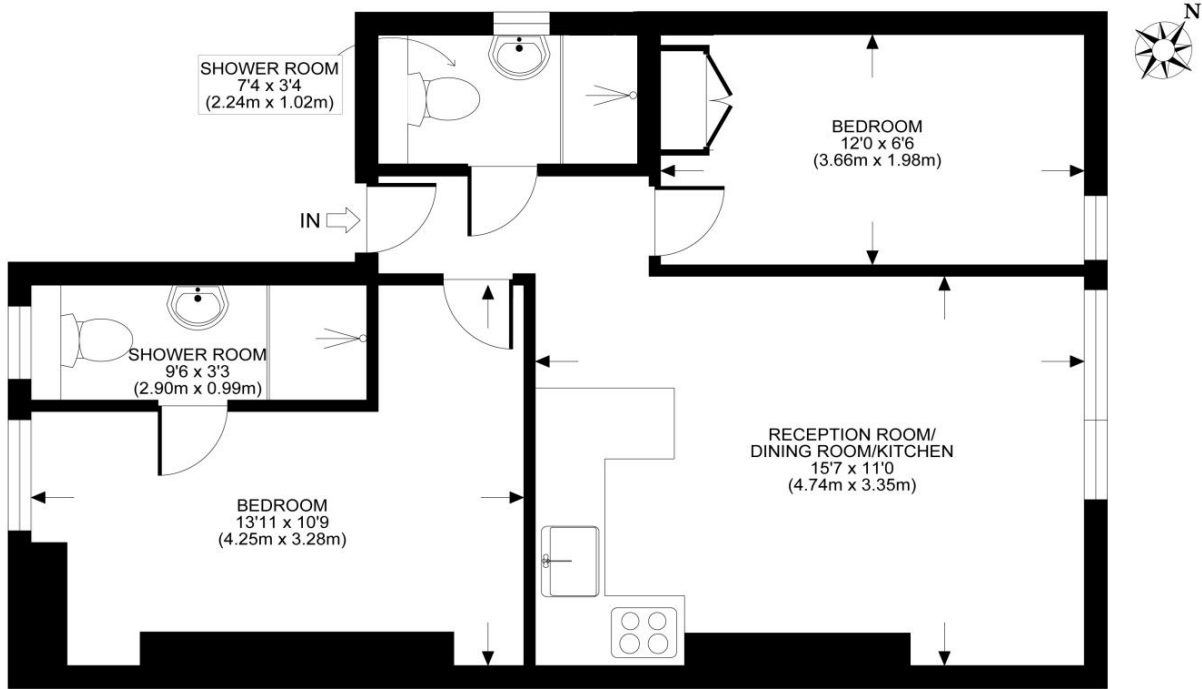
## AT A GLANCE

- BRIGHT
- AMAZING LOCATION
- CLOSE TO TRANSPORT LINKS
- CLOSE TO PORTOBELLO ROAD









All measurements walls, doors, windows, fittings and their appliances, their size and locations are shown conventionally and are approximate only and cannot be regarded as being a representation either by the seller or his agent nor zentuvo  
[www.zentuvo.co.uk](http://www.zentuvo.co.uk)

This floorplan is for illustration purposes only and is not to scale. The position and size of doors, windows, appliances and other features are approximate.

Energy Efficiency Rating		Current	Potential
Very energy efficient - lower running costs			
(92-100)	A		
(81-91)	B		
(69-80)	C		79
(55-68)	D		
(39-54)	E	47	
(21-38)	F		
(1-20)	G		
Not energy efficient - higher running costs			
England, Scotland & Wales		EU Directive 2002/91/EC	

North Kensington | 020 7792 5000 | [northkensington@winkworth.co.uk](mailto:northkensington@winkworth.co.uk)



for every step...

[winkworth.co.uk](http://winkworth.co.uk)

Winkworth wishes to inform prospective buyers and tenants that these particulars are a guide and act as information only. All our details are given in good faith and believed to be correct at the time of printing but they don't form part of an offer or contract. No Winkworth employee has authority to make or give any representation or warranty in relation to this property. All fixtures and fittings, whether fitted or not are deemed removable by the vendor unless stated otherwise and room sizes are measured between internal wall surfaces, including furnishings.