



Allotment Approach, Tiverton, EX16 5FL

Beautifully presented throughout, this three-bedroom semi-detached home is set in the popular Rackenford Meadows development. Ready to move and finished to a high standard, it's a property that truly needs to be seen to be appreciated.

Winkworth

Winkworth.co.uk

Crediton: 01363 773757
crediton@winkworth.co.uk

Exeter: 01392 271177
exeter@winkworth.co.uk

Tiverton: 01884 675 675
tiverton@winkworth.co.uk



DESCRIPTION:

Situated within the popular Rackenford Meadows development, this exceptionally well-presented three-bedroom semi-detached home offers well-balanced accommodation arranged over two floors and is truly turn-key ready.

The ground floor comprises a welcoming entrance hallway with stairs rising to the first floor and access to a convenient cloakroom/WC. To the front is a modern, well-proportioned kitchen fitted with a range of units and work surfaces, while to the rear sits a generous living room, flooded with natural light and featuring double doors opening directly onto the rear garden—ideal for both everyday living and entertaining.

To the first floor, the landing provides access to three bedrooms. The main bedroom benefits from its own en-suite shower room, while the remaining two bedrooms are served by a contemporary family bathroom.

All rooms are well laid out, making the property suitable for families, first-time buyers, or those looking to downsize without compromise.

Externally, the home enjoys a private rear garden, perfect for outdoor dining and relaxation, along with off-road parking to the side.

Finished to a high standard throughout, this impressive home must be viewed to be fully appreciated.

INFORMATION:

Council Tax: Band C - Mid Devon

Services: Mains water, Mains electric and Main Gas

Broadband: Ultrafast Full Fibre Available Within This Postcode, Fibre to the Premises.

Mobile Signal: You are likely to get good coverage.

Tenure: Freehold

Directions:-

Using the what3words app, search:-

mostly.seated.lock



AT A GLANCE:

Three bedrooms
Popular development
Spacious lounge
Sunny rear garden

Ample driveway parking

Gas central heating

Modern kitchen with integrated appliances

Immaculately presented throughout

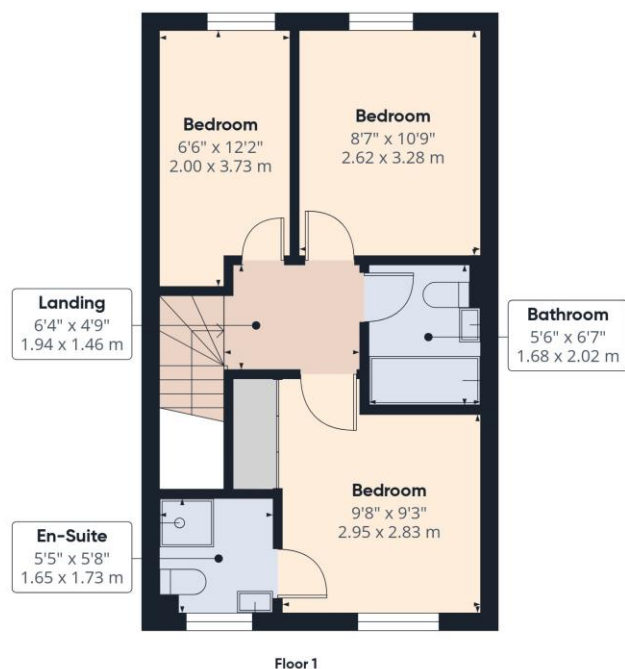
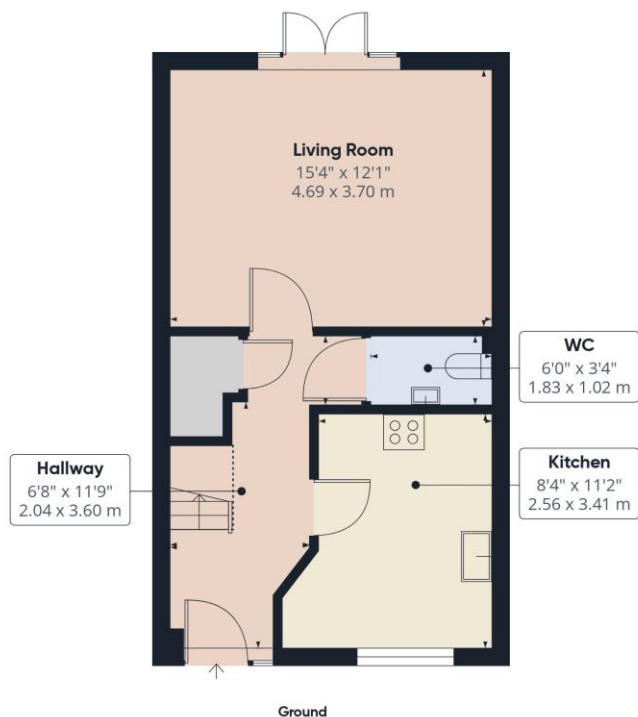
NO ONWARD CHAIN

PROPERTY INFORMATION:

Freehold

Council tax Band: C

Mains electric, gas, water and drainage.



NOTICE: Whilst every effort has been made to ensure the accuracy of these sales details, they are for guidance purposes only and prospective purchasers are advised to seek their own professional advice as well as to satisfy themselves by inspection or otherwise as to their correctness. No representation or warranty whatsoever is made in relation to this property by Winkworth or its employees nor do such sales details form part of any offer or contract.

Winkworth

Crediton: 01363 773757
crediton@winkworth.co.uk

Exeter: 01392 271177
exeter@winkworth.co.uk

Tiverton: 01884 675 675
tiverton@winkworth.co.uk