

HEMECROSS HOUSE, FISHERS LANE, W4
£310,000 LEASEHOLD

**WE ARE DELIGHTED TO MARKET THIS ONE
 DOUBLE BEDROOM RETIREMENT PROPERTY IN
 THE HEART OF BUSTLING CHISWICK**

Chiswick | 020 8994 7096 | chiswick@winkworth.co.uk

Winkworth

for every step...

winkworth.co.uk



DESCRIPTION:

RETIREMENT PROPERTY - A fantastic example of an upper floor (with lift) one double bedroom retirement apartment in this secure development located in the heart of Chiswick. With pleasant views, the property does need refurbishing but is a great opportunity to join the community of Homecross House.

The apartment comprises of an entrance hall with a storage cupboard, a double bedroom with fitted wardrobes and a large reception room with a separate kitchen just off and a fitted bathroom. There is a 24-hour "Apello" emergency call system.

Homecross House has a communal living room, an on-site Development Manager who is on duty 9am - 5pm weekdays, lift and stairs to all floors, launderette, residents parking, communal gardens, two guest suites and wheelchair accessible. There are various activities and clubs for residents to enjoy.

Centrally located, it has numerous facilities on its doorstep including Chiswick High Road's restaurants, bars and cafés, and an extensive variety of shops and other amenities. Transport links include Turnham Green District Line Tube Station or local bus links and access to the A4/M4 to the West and into Central London.

Single residents must be over the age of 60 years or in the case of couples, one must be over the age of 60 years and the other over 55 years.

Pets are welcome (with permission from the managing agents).

ACCOMMODATION

One double bedroom, first floor apartment with lift

Retirement flat for the over 60's

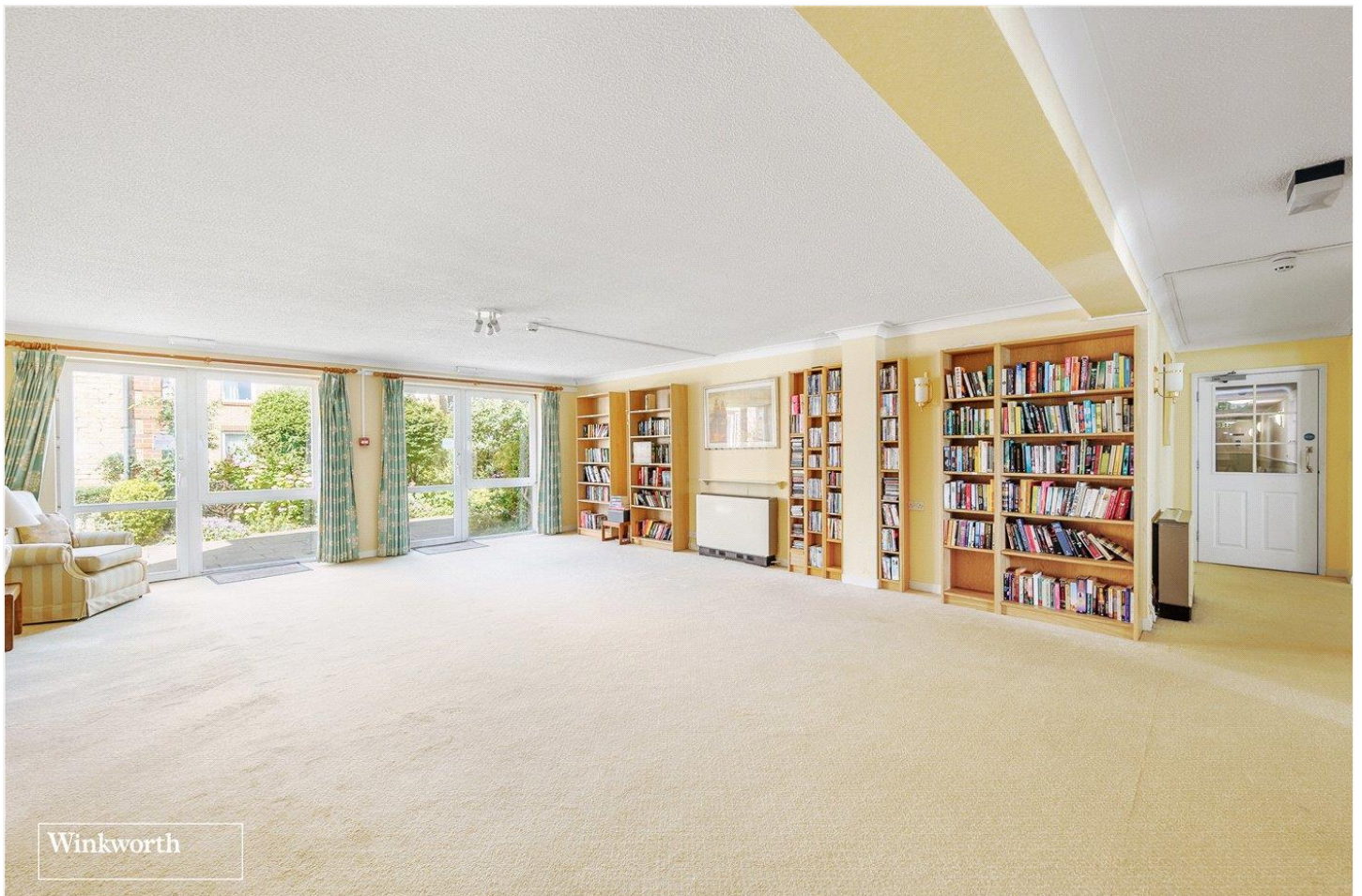
Independent living with 24-hour help call facilities

Just off the High Road

Flat needs refurbishing

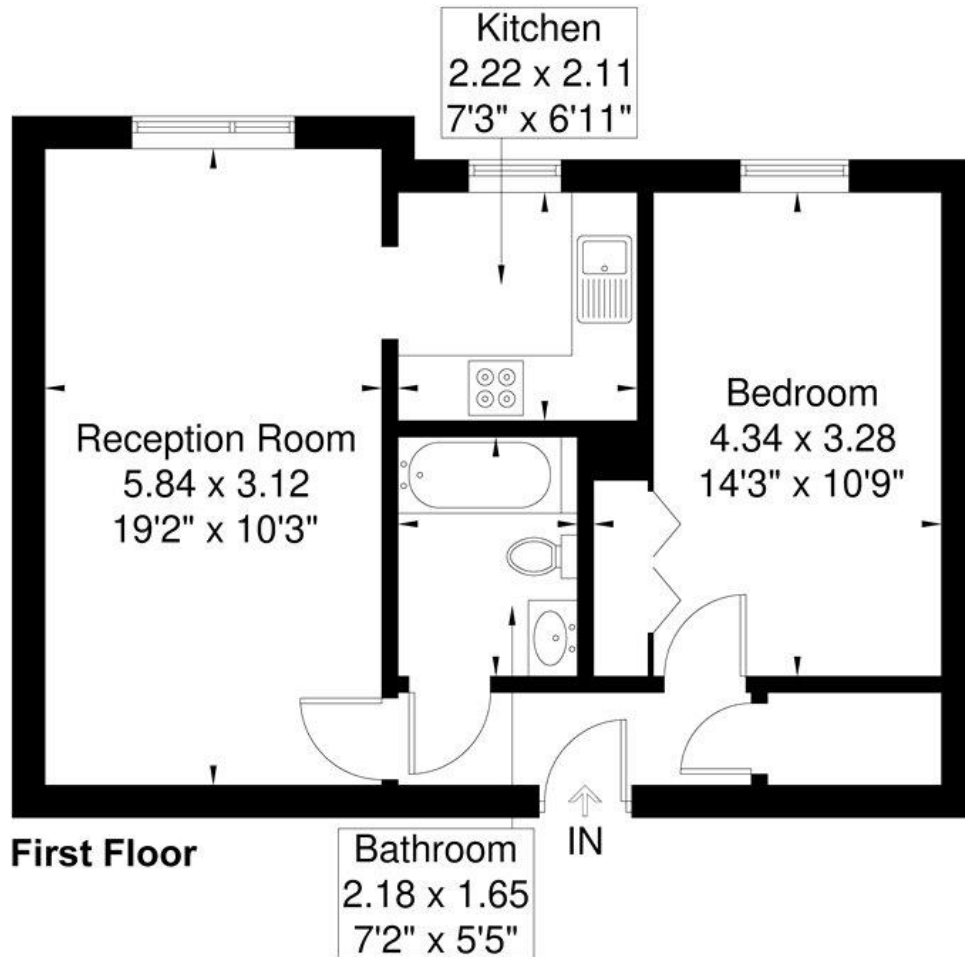
100+ year left on lease

No chain



Homecross House

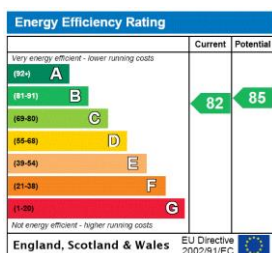
Approximate Gross Internal Area = 46.2 sq m / 497 sq ft



Winkworth

Although every attempt has been made to ensure accuracy, all measurements are approximate.
The floorplan is for illustrative purposes only and not to scale.
© www.prspective.co.uk

This floorplan is for illustration purposes only and is not to scale. The position and size of doors, windows, appliances and other features are approximate.



Chiswick | 020 8994 7096 | chiswick@winkworth.co.uk

Winkworth

for every step...

winkworth.co.uk

Winkworth wishes to inform prospective buyers and tenants that these particulars are a guide and act as information only. All our details are given in good faith and believed to be correct at the time of printing but they don't form part of an offer or contract. No Winkworth employee has authority to make or give any representation or warranty in relation to this property. All fixtures and fittings, whether fitted or not are deemed removable by the vendor unless stated otherwise and room sizes are measured between internal wall surfaces, including furnishings.