



KENNET HOUSE, LONDON, SW18
£2,050 PER MONTH FURNISHED, PART FURNISHED

**A stylish one bedroom apartment with a balcony
in an exclusive riverside development**

Putney | 020 8877 1000 | putney@winkworth.co.uk

Winkworth

for every step...

winkworth.co.uk



DESCRIPTION:

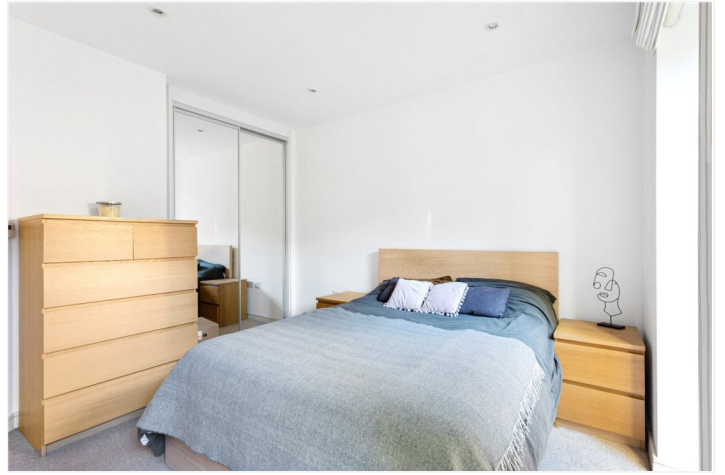
A stylish one bedroom apartment with a balcony in an exclusive riverside development.

This modern one bedroom flat is situated on the first floor (with lift) of a sought-after riverside development benefitting from a concierge service and access to a residents' gym.

The property extends to 534 sq. ft. and the bright, open-plan kitchen/reception room offers dual aspect with floor to ceiling French doors opening onto a West facing balcony providing afternoon and evening sun. The bedroom is generously sized and features a double built-in wardrobe. There is a luxury bathroom including bath with shower over and the welcoming entrance hall features two useful utility cupboards.

Kennet House is a popular riverside development which occupies a desirable position, moments from the banks of the River Thames and close to the green open spaces of Wandsworth Park. The local amenities of Wandsworth Town, Southside Shopping Centre and Putney High Street are all easily accessible and offer a range of popular shops, bars, and restaurants. The closest shop is Sainsbury's local in the development.

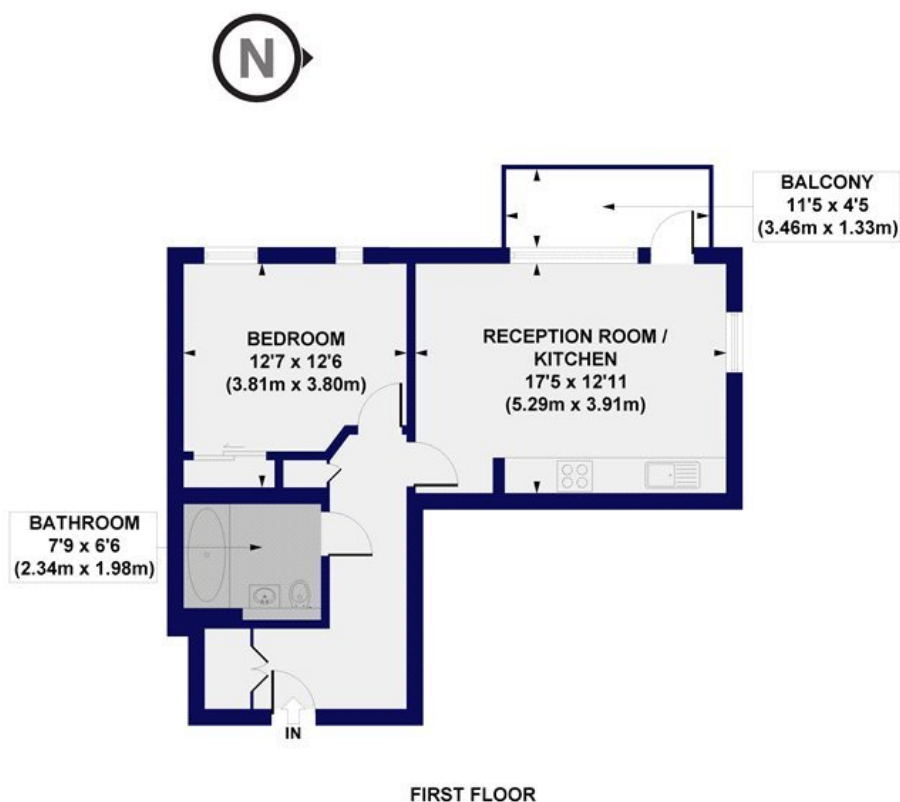
Wandsworth Town station provides regular over ground services to London Waterloo and Clapham Junction, whilst East Putney station enables easy access to the City via the District Line. Kennet House is also a short walk to Wandsworth Riverside Quarter Pier for the Uber Thames Clipper services to Central London and Canary Wharf.



ACCOMMODATION

Long Let, 1 Bedroom, 1 Reception Room, 1 Bathroom, Flat/Apartment, First Floor, Upper Floor with Lift, Balcony, Modern, Town/City, Porter/Concierge, Furnished, Part Furnished, 534 Approx Sq Ft

Kennet House, Enterprise Way, SW18
Approx. Gross Internal Floor Area 534 sq. ft / 49.58 sq. m



All measurements of walls, doors, windows, fittings and appliances, including their size and location, are shown as standard sizes and do not constitute any warranty or representation by the seller, their agent or CP Creative. Any intending purchaser must satisfy himself by inspection or otherwise as to the correctness of the information contained in these plans. This plan is for illustrative purposes only and should be used as such by any prospective purchasers.

Winkworth

This floorplan is for illustration purposes only and is not to scale. The position and size of doors, windows, appliances and other features are approximate.

Deposit: 5 weeks' rent

Holding Deposit: 1 week's rent

Council Tax Band: Wandsworth

Where no figures are shown, we have been unable to ascertain the information. All figures that are shown were correct at the time of printing.

Putney | 020 8877 1000 | putney@winkworth.co.uk

Winkworth

for every step...

winkworth.co.uk

Winkworth wishes to inform prospective buyers and tenants that these particulars are a guide and act as information only. All our details are given in good faith and believed to be correct at the time of printing but they don't form part of an offer or contract. No Winkworth employee has authority to make or give any representation or warranty in relation to this property. All fixtures and fittings, whether fitted or not are deemed removable by the vendor unless stated otherwise and room sizes are measured between internal wall surfaces, including furnishings.